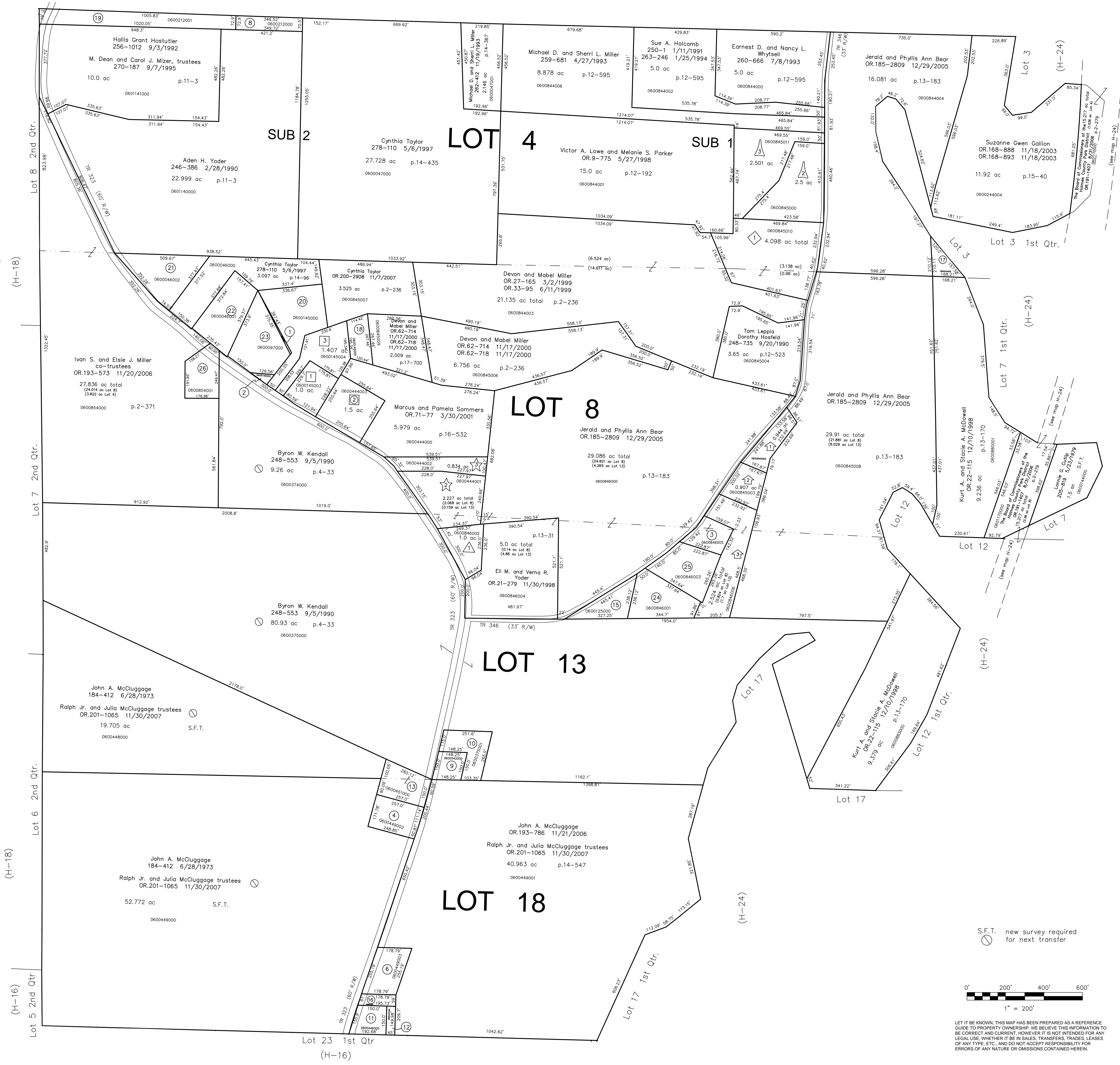
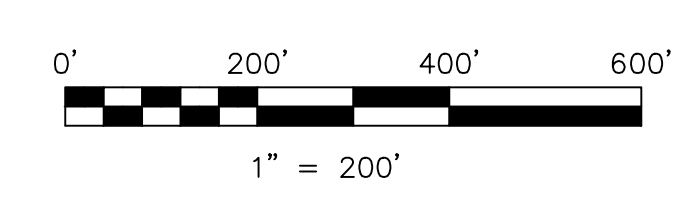


- 0600145001 ① MAYNARD HARVEY L. AND LYNN S. 237-913 1/29/1988 0.041 ac p.10-896
- 0600145002 ② MAYNARD HARVEY L. AND LYNN S. 237-913 1/29/1988 0.082 ac p.10-896
- 0600846005 ③ STROUSE JAMES D. AND LOIS E. 241-151 11/4/1988 0.649 ac p.13-31
- 0600449002 ④ MCLUGGAGE CHERYL ANN OR.0108-331 3/26/2002 1.0 ac p.18-243
- ⑤ Not used
- 0600449003 ⑥ MCLUGGAGE DAVID OR.0168-1414 11/24/2003 OR.0169-978 1/6/2004 1.0 ac p.18-813
- ⑦ Not used
- 0600212000 ⑧ MARTIN DAVID N. AND JAMES N. OR.0148-430 5/16/2003 0.573 ac p.12-922
- 0600542000 ⑨ Wayne E. Miller OR.193-3073 12/22/2006 0.50 ac p.5-14
- 0600375001 ⑩ Wayne E. Miller OR.193-3073 12/22/2006 1.0 ac p.14-502
- 0600446000 ⑪ MCLUGGAGE JOHN A. AND PHYLLIS A. 147-381 3/29/1962 0.59 ac p.3-559
- 0600447000 ⑫ MCLUGGAGE JOHN A. AND PHYLLIS A. 184-412 6/28/1973 0.154 ac p.7-70
- 0600451000 ⑬ Ralph Jr. and Julia McCluggage, trustees OR.201-1065 11/30/2007 1.0 ac total p.7-70 (0.705 ac Lot 18 + 0.295 ac Lot 13)
- ⑭ Not used
- 0600125000 ⑮ David E. and Suzanne E. Peight OR.184-2079 11/7/2005 0.872 ac p.7-247
- 0600447001 ⑯ MCLUGGAGE DAVID OR.0168-1416 11/26/2003 0.256 ac p.18-813
- 0600244002 ⑰ GALLON SUZANNE GWEN OR.0168-888 11/18/2003 OR.0168-893 11/18/2003 0.405 ac p.15-40
- 0600145005 ⑱ MILLER DEVON AND MABEL OR.0168-1948 12/2/2003 0.592 ac p.18-819
- 0600212001 ⑲ MOSSOR, JEROD J. LANE, SAMANTHY E. 284-219 4/26/1994 1.794 ac p.12-922
- 0600145000 ⑳ Cynthia Taylor OR.200-2908 11/7/2473 2.08 ac p.14-862
- 0600046002 ㉑ FARLEY DEWEY R. AND SARITA J. 245-715 12/19/1989 1.865 ac p.12-352
- 0600046001 ㉒ TAYLOR CYNTHIA OR.0091-451 10/25/2001 1.865 ac p.12-352
- 0600097000 ㉓ MAYNARD HARVEY L. AND LYNN S. 219-816 3/17/1983 1.748 ac p.8-609
- 0600846001 ㉔ Richard L. and Susie E. Watson OR.192-2888 11/3/2006 1.478 ac p.19-855
- 0600846003 ㉕ STROUSE LOIS E. AND JAMES D. 232-174 8/29/1986 238-885 4/26/1988 1.5 ac p.10-598
- 0600854001 ㉖ Richard and Lori Edwards OR.193-578 11/20/2006 1.000 ac p.19-869



S.F.T. new survey required for next transfer



LET IT BE KNOWN, THIS MAP HAS BEEN PREPARED AS A REFERENCE GUIDE TO PROPERTY OWNERSHIP. WE BELIEVE THIS INFORMATION TO BE CORRECT AND CURRENT, HOWEVER IT IS NOT INTENDED FOR ANY LEGAL USE, WHETHER IT BE IN SALES, TRANSFERS, TRADES, LEASES OF ANY TYPE, ETC., AND DO NOT ACCEPT RESPONSIBILITY FOR ERRORS OF ANY NATURE OR OMISSIONS CONTAINED HEREIN.

Last Revision: 11/30/2007

**T-9, R-7, 1st QTR.
LOTS 4, 8, 13, 18
HARDY TWP.
HOLMES COUNTY, OHIO**

- ① George F. Dawson Allotment No.1 Plat 13-198 Platted 7/19/1993
- ② EDMONSON SUSAN E. 281-460 11/19/1997 1.0 ac
- ③ George F. Dawson Allotment No.2 Plat 17-833 Platted 3/28/2001
- ④ DAWSON GEORGE E. AND BARBARA J. OR.0071-2 3/30/2001 1.5 ac

- ⑤ Levi A. Miller Allotment No.1 Plat 13-194 Platted 6/29/1993
- ⑥ BROWN SCOTT AND WENDY 268-410 5/2/1995 4.998 ac
- ⑦ Levi A. Miller Allotment No.2 Plat 15-16 Platted 9/27/1993
- ⑧ WHYTSSELL DAVID A. AND CHERYL L. 261-751 9/28/1993 2.5 ac
- ⑨ LOWE, VICTOR A. PARKER, MELANIE S. OR.0009-775 5/27/1998 2.501 ac

- ⑩ Replotting and Renumbering of Gerald W. McBride Allotment No.1 Plat 16-864 Platted 9/18/1998
- ⑪ MCBRIDE GERALD W. AND BERTHA M. 209-436 5/9/1980 279-895 9/11/1997 2.227 ac
- ⑫ SUMMERS MARCUS AND PAMELA OR.0071-77 3/30/2001 0.834 ac

- ⑬ Sechrist Subdivision Plat 17-769 Platted 1/24/2001
- ⑭ Sechrist Subdivision - First Addition Plat 18-820 Platted 12/2/2003
- ⑮ Sechrist Subdivision Plat 17-769 Platted 11/7/2000
- ⑯ Sechrist Subdivision Plat 17-769 Platted 11/7/2000
- ⑰ Sechrist Subdivision Plat 17-769 Platted 11/7/2000
- ⑱ Sechrist Subdivision Plat 17-769 Platted 11/7/2000
- ⑲ Sechrist Subdivision Plat 17-769 Platted 11/7/2000
- ⑳ Sechrist Subdivision Plat 17-769 Platted 11/7/2000
- ㉑ Sechrist Subdivision Plat 17-769 Platted 11/7/2000
- ㉒ Sechrist Subdivision Plat 17-769 Platted 11/7/2000
- ㉓ Sechrist Subdivision Plat 17-769 Platted 11/7/2000
- ㉔ Sechrist Subdivision Plat 17-769 Platted 11/7/2000
- ㉕ Sechrist Subdivision Plat 17-769 Platted 11/7/2000
- ㉖ Sechrist Subdivision Plat 17-769 Platted 11/7/2000
- ㉗ Sechrist Subdivision Plat 17-769 Platted 11/7/2000
- ㉘ Sechrist Subdivision Plat 17-769 Platted 11/7/2000
- ㉙ Sechrist Subdivision Plat 17-769 Platted 11/7/2000
- ㉚ Sechrist Subdivision Plat 17-769 Platted 11/7/2000
- ㉛ Sechrist Subdivision Plat 17-769 Platted 11/7/2000
- ㉜ Sechrist Subdivision Plat 17-769 Platted 11/7/2000
- ㉝ Sechrist Subdivision Plat 17-769 Platted 11/7/2000
- ㉞ Sechrist Subdivision Plat 17-769 Platted 11/7/2000
- ㉟ Sechrist Subdivision Plat 17-769 Platted 11/7/2000
- ㊱ Sechrist Subdivision Plat 17-769 Platted 11/7/2000
- ㊲ Sechrist Subdivision Plat 17-769 Platted 11/7/2000
- ㊳ Sechrist Subdivision Plat 17-769 Platted 11/7/2000
- ㊴ Sechrist Subdivision Plat 17-769 Platted 11/7/2000
- ㊵ Sechrist Subdivision Plat 17-769 Platted 11/7/2000
- ㊶ Sechrist Subdivision Plat 17-769 Platted 11/7/2000
- ㊷ Sechrist Subdivision Plat 17-769 Platted 11/7/2000
- ㊸ Sechrist Subdivision Plat 17-769 Platted 11/7/2000
- ㊹ Sechrist Subdivision Plat 17-769 Platted 11/7/2000
- ㊺ Sechrist Subdivision Plat 17-769 Platted 11/7/2000
- ㊻ Sechrist Subdivision Plat 17-769 Platted 11/7/2000
- ㊼ Sechrist Subdivision Plat 17-769 Platted 11/7/2000
- ㊽ Sechrist Subdivision Plat 17-769 Platted 11/7/2000
- ㊾ Sechrist Subdivision Plat 17-769 Platted 11/7/2000
- ㊿ Sechrist Subdivision Plat 17-769 Platted 11/7/2000

- ① Watson-Strouse Subdivision Plat 17-688 Platted 11/7/2000
- ② STROUSE STEPHANIE E. OR.0110-283 4/17/2002 0.944 ac
- ③ STROUSE JAMES D. AND LOIS E. OR.0063-134 11/28/2000 0.907 ac
- ④ PATTERSON JAMES L. AND ROSEL A. OR.0065-100 1/3/2001 2.524 ac