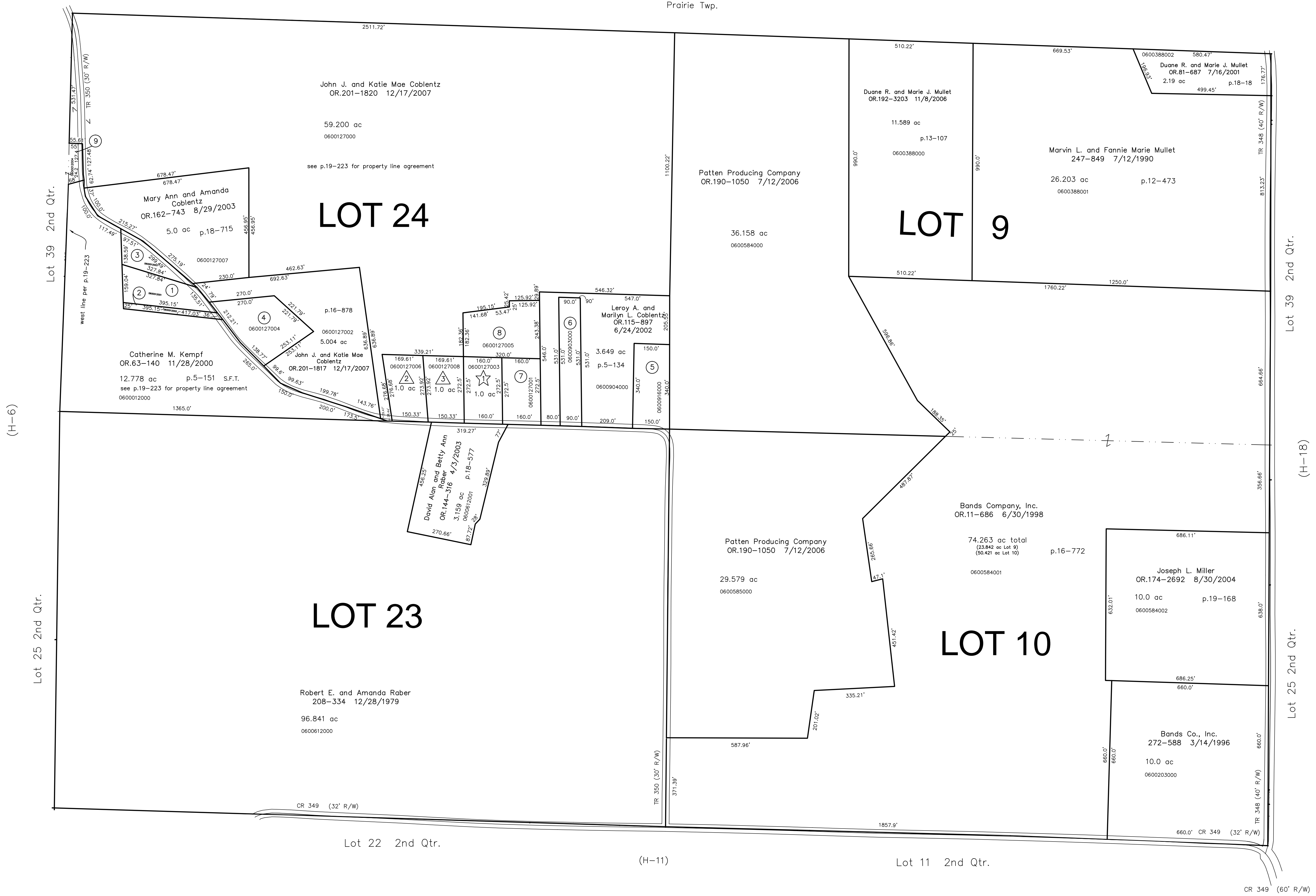


Prairie Twp.



- 0600012001 ① Allen J. Hostetler
OR.185-2166 12/21/2005
1.0 ac p.14-465
- 0600012002 ② Allen J. Hostetler
OR.185-2166 12/21/2005
0.238 ac p.14-840
- 0600012003 ③ Allen J. Hostetler
OR.185-2166 12/21/2005
0.362 ac p.14-840
- 0600127004 ④ LORRE L. POST
OR.0174-835 8/4/2004
1.567 ac p.16-97
- 0600916000 ⑤ MARVIN R. AND SARA ANN MILLER
233-514 12/4/1986
1.171 ac p.8-527
- 0600903000 ⑥ LEROY A. AND MARILYN L. COBLENTZ
OR.0115-897 6/24/2002
1.1 ac p.3-68 B
- 0600127001 ⑦ PAUL DEAN AND DIANE MCCLUGGAGE
233-128 10/16/1991
1.0 ac p.10-951
- 0600127005 ⑧ LEROY A. AND MARILYN L. COBLENTZ
OR.0115-897 6/24/2002
1.375 ac p.16-214
- 0600012004 ⑨ ATLEE M. AND FANNIE MAE TROYER
OR.0177-2163 1/13/2005
3.363 ac total p.19-287
(0.222 ac Lot 24 + 3.141 ac Lot 39)

☆ L & R Subdivision No.1
Plot 17-318 Platted 11/29/1999

☆ LISA E. MORRIS
OR.0043-238 12/3/1999
1.0 ac

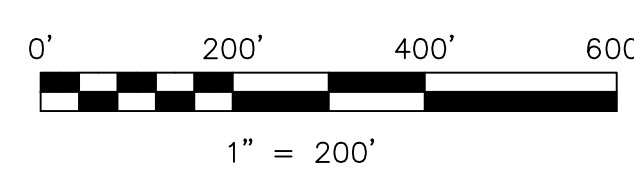
△ Riley Allotment No.1, Replat of Lot 1
Plot 19-595 Platted 1/4/2006

△ Ronald G. and Melissa Reed
OR.188-1155 1/24/2006
1.0 ac p.19-595

△ Ronald G. and Melissa Reed
OR.201-1592 12/11/2007
1.0 ac p.19-595

Last Revision: 12/17/2007

**T-9, R-7, 2nd Qtr.
LOTS 9, 10, 23, 24
HARDY TWP.
HOLMES COUNTY, OHIO**



S.F.T. new survey required
for next transfer

LET IT BE KNOWN, THIS MAP HAS BEEN PREPARED AS A REFERENCE GUIDE TO PROPERTY OWNERSHIP. WE BELIEVE THIS INFORMATION TO BE CORRECT AND CURRENT, HOWEVER IT IS NOT INTENDED FOR ANY LEGAL USE, WHETHER IT BE IN SALES, TRANSFERS, TRADES, LEASES OF ANY TYPE, ETC., AND DO NOT ACCEPT RESPONSIBILITY FOR ERRORS OF ANY NATURE OR OMISSIONS CONTAINED HEREIN.

H-12