

3rd Qtr. Lot 13

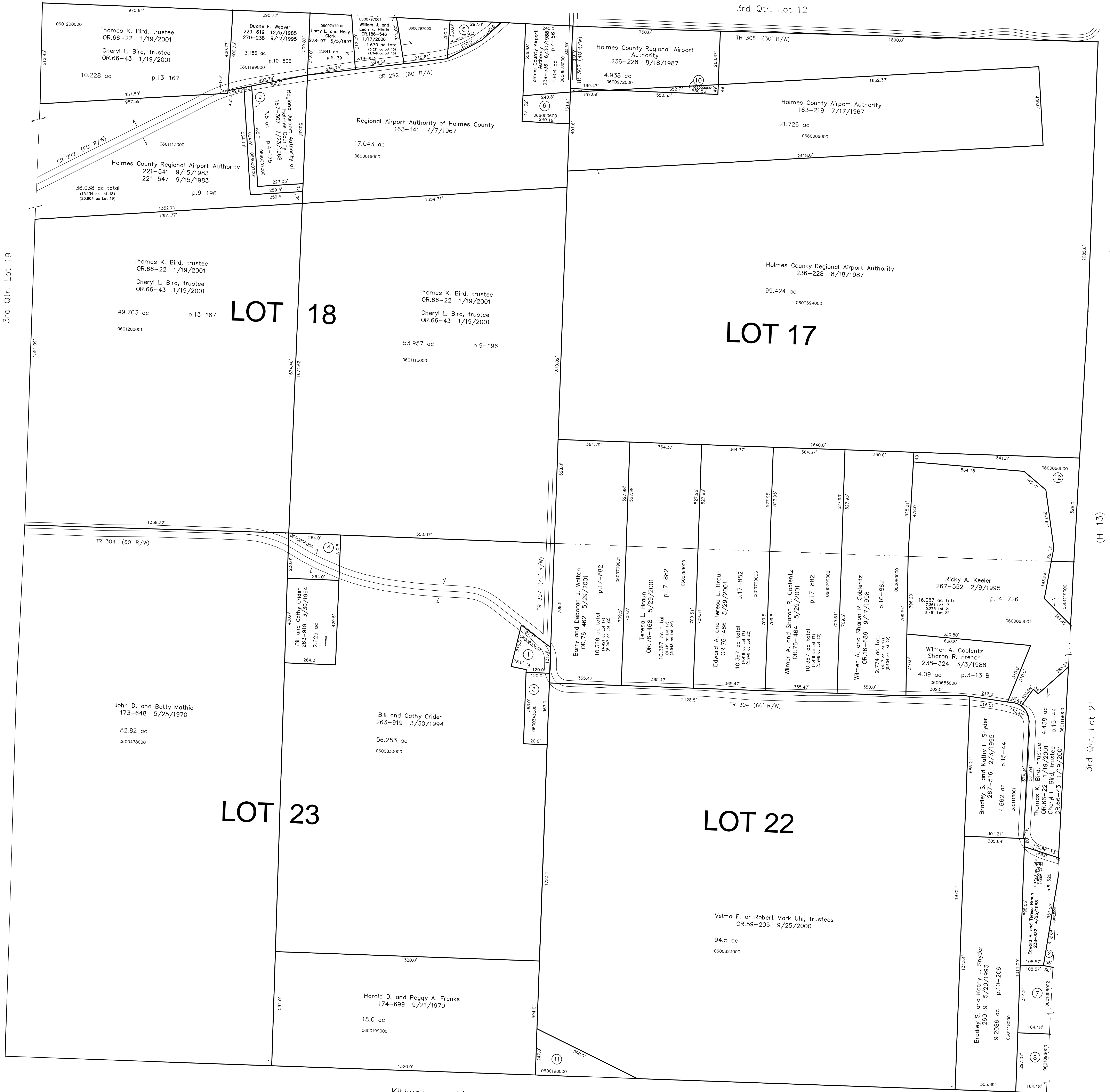
(H-08)

3rd Qtr. Lot 12

- 0600833001 ① Donald F. and Patricia A. Huebner  
230-911 4/18/1986  
0.747 ac p.10-554
- 0600830001 ② Lavern J. and Luella E. Miller  
263-761 3/15/1994  
0.27 ac p.13-162
- 0600343000 ③ Donald F. and Patricia A. Huebner  
178-1 9/13/1971  
1.0 ac p.5-94
- 0600006000 ④ Teresa Lynn Braun  
261-266 8/24/1993  
1.371 ac
- 0600257000 ⑤ Brian and Anne Lieb  
268-268 4/20/1995  
0.77 ac p.5-46
- 0660006001 ⑥ Holmes County Airport Authority  
163-219 7/17/1967  
0.806 ac
- 0601096002 ⑦ Dirk and Beth A. Barnes  
OR. 120-190 8/13/2002  
1.298 ac p.18-352
- 0601096000 ⑧ R & E Uhl Family Farm, LLC  
OR. 64-633 12/21/2000  
1.119 ac p.17-738
- 0660007001 ⑨ Regional Airport Authority of  
Holmes County  
167-307 7/23/1968  
0.76 ac p.4-175
- 0660006002 ⑩ Holmes County Airport Authority  
163-219 7/17/1967  
0.312 ac
- 0600198000 ⑪ Harold D. and Peggy A. Franks  
174-699 9/21/1970  
1.5 ac
- 0600066000 ⑫ Thomas K. Bird, Trustee  
OR. 66-22 1/19/2001  
Cheryl L. Bird, Trustee  
OR. 66-43 1/19/2001  
2.829 ac

(H-01)

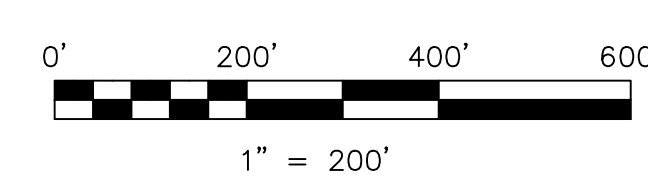
3rd Qtr. Lot 24



Killbuck Township  
(K-25)

Last Revision: 1/17/2006

**T-9, R-7, 3rd Qtr.  
LOTS 17, 18, 22, 23  
HARDY TWP.  
HOLMES COUNTY, OHIO**



S.F.T. new survey required  
for next transfer

LET IT BE KNOWN, THIS MAP HAS BEEN PREPARED AS A REFERENCE  
GUIDE TO PROPERTY OWNERSHIP. WE BELIEVE THIS INFORMATION TO  
BE CORRECT AND CURRENT. HOWEVER IT IS NOT INTENDED FOR ANY  
LEGAL USE, WHETHER IT BE IN SALES, TRANSFERS, TRUSTS, LEASES  
OF ANY TYPE, ETC., AND DO NOT ACCEPT RESPONSIBILITY FOR  
ERRORS OF ANY NATURE OR OMISSIONS CONTAINED HEREIN.

**H-07**