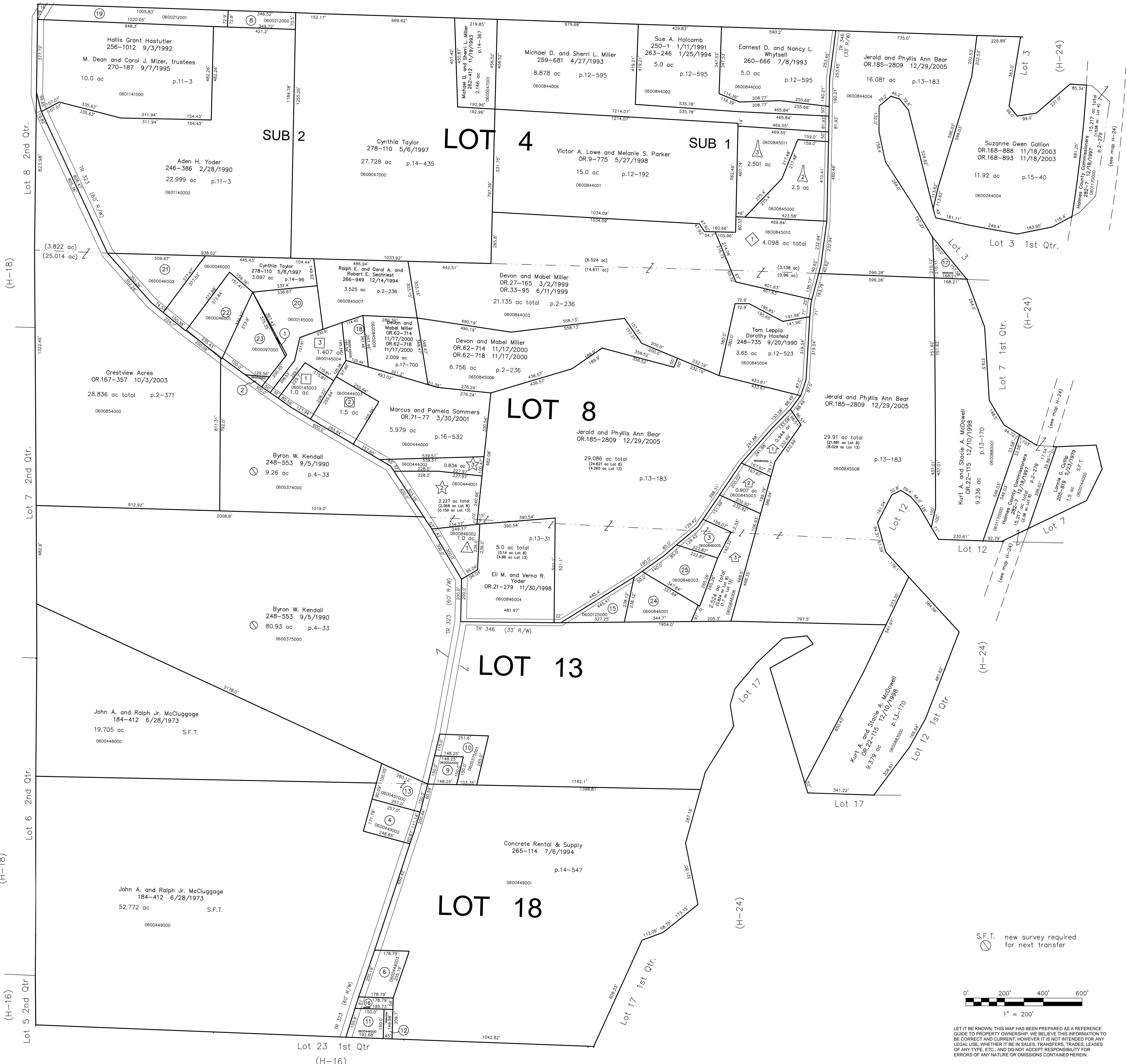


- 0600145001 ① MAYNARD HARVEY L. AND LYNN S. 237-913 1/29/1988 0.041 ac p.10-896
- 0600145002 ② MAYNARD HARVEY L. AND LYNN S. 237-913 1/29/1988 0.082 ac p.10-896
- 0600846005 ③ STROUSE JAMES D. AND LOIS E. 241-151 11/4/1988 0.649 ac p.13-31
- 0600449002 ④ MCCLUGGAGE CHERYL ANN OR.0108-531 3/28/2002 1.0 ac p.18-243
- ⑤ Not used
- 0600449003 ⑥ MCCLUGGAGE DAVID OR.0168-1414 11/24/2003 OR.0169-978 1/6/2004 1.0 ac p.18-813
- ⑦ Not used
- 0600212000 ⑧ MARTIN DAVID N. AND JAMES N. OR.0149-530 5/16/2003 0.573 ac p.12-922
- 0600542000 ⑨ MILLER WAYNE E. 176-601 4/27/1991 OR.0107-884 3/22/2002 0.50 ac p.5-14
- 0600375001 ⑩ MILLER WAYNE E. 264-297 5/3/1994 OR.0107-886 3/22/2002 1.0 ac p.14-502
- 0600446000 ⑪ MCCLUGGAGE JOHN A. AND PHYLLIS A. 147-381 3/29/1962 0.59 ac p.3-550
- 0600447000 ⑫ MCCLUGGAGE JOHN A. AND PHYLLIS A. 184-414 6/28/1973 0.154 ac p.7-70
- 0600451000 ⑬ MCCLUGGAGE RALPH JR. 184-415 5/28/1973 1.0 ac p.7-71
- ⑭ Not used
- 0600125000 ⑮ David E. and Suzanne E. Peight OR.184-2079 11/17/2005 0.872 ac p.7-247
- 0600447001 ⑯ MCCLUGGAGE DAVID OR.0168-1416 11/26/2003 0.256 ac p.18-813
- 0600244002 ⑰ GALLION SUZANNE GWEN OR.0168-888 11/18/2003 OR.0168-893 11/18/2003 0.405 ac p.15-40
- 0600145005 ⑱ MILLER DEVON AND MABEL OR.0168-1948 12/2/2003 0.592 ac p.18-819
- 0600212001 ⑲ MOSSOR, JEROD J. LANE, SAMANTHY E. 284-219 4/26/1994 1.794 ac p.12-922
- 0600145000 ⑳ SCHRIEST RALPH E. AND CAROL A. AND ROBERT E. 266-949 12/14/1994 2.08 ac p.14-552
- 0600046002 ㉑ FARLEY DEWEY R. AND SARITA J. 245-715 12/19/1989 1.865 ac p.12-352
- 0600046001 ㉒ TAYLOR CYNTHIA OR.0091-451 10/25/2001 1.665 ac p.12-352
- 0600097000 ㉓ MAYNARD HARVEY L. AND LYNN S. 219-816 3/17/1983 1.748 ac p.8-609
- 0600846001 ㉔ WATSON RICHARD L. 231-804 7/28/1986 247-779 7/3/1990 277-218 2/20/1997 1.476 ac p.10-592
- 0600846003 ㉕ STROUSE LOIS E. AND JAMES D. 232-174 8/29/1986 238-885 4/28/1988 1.5 ac p.10-598



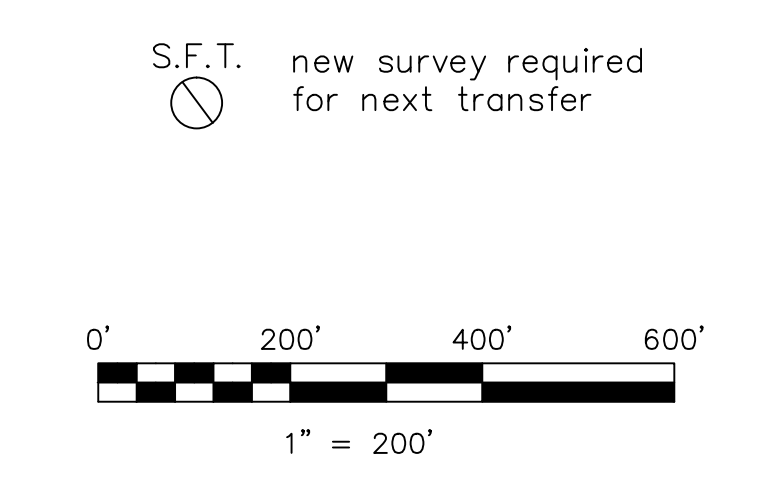
- △ George F. Dawson Allotment No.1 Plat 13-198 Platted 7/19/1993
- 0600846002 △ EDMONSON SUSAN E. 281-460 11/19/1997 1.0 ac
- George F. Dawson Allotment No.2 Plat 17-833 Platted 3/28/2001
- 0600444003 □ DAWSON GEORGE E. AND BARBARA J. OR.0071-2 3/30/2001 1.5 ac

- ◇ Levi A. Miller Allotment No.1 Plat 13-194 Platted 6/29/1993
- 0600845010 ◇ BROWN SCOTT AND WENDY 268-410 5/2/1995 4.998 ac
- ◇ Levi A. Miller Allotment No.2 Plat 15-16 Platted 9/27/1993
- 0600845000 ◇ WHITSSELL DAVID A. AND CHERYL L. 261-751 9/28/1993 2.5 ac
- 0600845011 ◇ LOWE, VICTOR A. PARKER, MELANIE S. OR.0009-775 5/27/1998 2.501 ac

- ☆ Replotting and Renumbering of Gerald W. McBride Allotment No.1 Plat 16-864 Platted 9/18/1998
- 0600444001 ☆ MCBRIDE GERALD W. AND BERTHA M. 209-436 5/8/1980 278-895 9/11/1997 2.227 ac
- 0600444002 ☆ SOMMERS MARCUS AND PAMELA OR.0071-77 3/30/2001 0.834 ac

- Schriest Subdivision Plat 17-769 Platted 1/24/2001
- 0600145003 □ SCHRIEST RALPH E. AND CAROL A. 266-949 12/14/1994 1.0 ac
- Schriest Subdivision - First Addition Plat 18-820 Platted 12/2/2003
- 0600145004 □ SCHRIEST RALPH E. AND CAROL A. 266-949 12/14/2003 1.407 ac

- △ Watson-Strouse Subdivision Plat 17-688 Platted 11/7/2000
- 0600845005 △ STROUSE STEPHANIE E. OR.0110-283 4/17/2002 0.944 ac
- 0600845003 △ STROUSE JAMES D. AND LOIS E. OR.0063-134 11/28/2000 0.907 ac
- 0600846006 △ PATTERSON JAMES L. AND ROSEL A. OR.0065-100 1/3/2001 2.524 ac



LET IT BE KNOWN, THIS MAP HAS BEEN PREPARED AS A REFERENCE GUIDE TO PROPERTY OWNERSHIP. WE BELIEVE THIS INFORMATION TO BE CORRECT AND CURRENT, HOWEVER IT IS NOT INTENDED FOR ANY LEGAL USE, WHETHER IT BE IN SALES, TRANSFERS, TRADES, LEASES OF ANY TYPE, ETC., AND DO NOT ACCEPT RESPONSIBILITY FOR ERRORS OF ANY NATURE OR OMISSIONS CONTAINED HEREIN.

Last Revision: 12/29/2005

**T-9, R-7, 1st QTR.
LOTS 4, 8, 13, 18
HARDY TWP.
HOLMES COUNTY, OHIO**

H-17