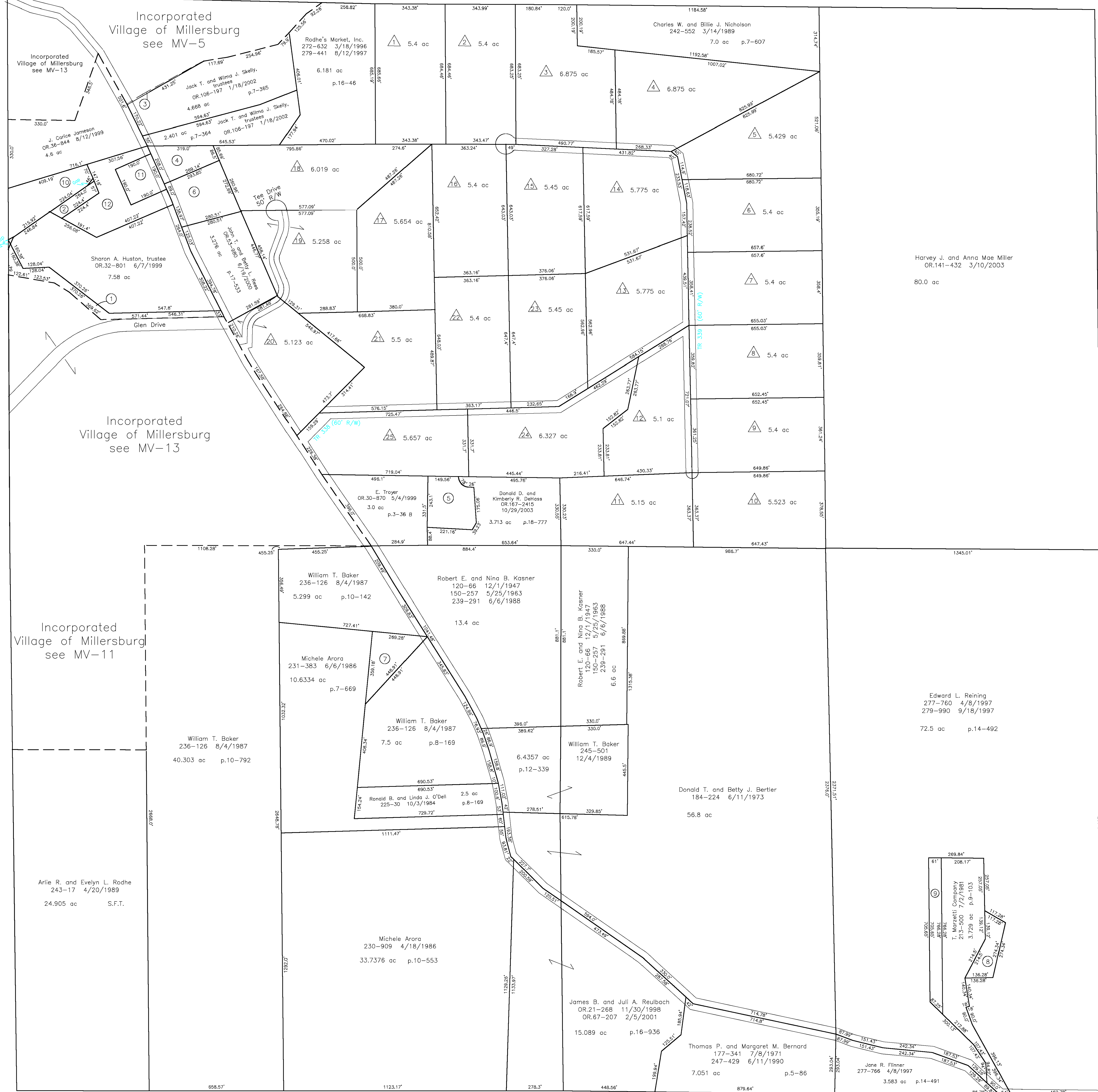


TR 312 (60' R/W)
 see MV-5, outlet 4, for 0.04 ac parcel (p.18-493)
 that is in the township but shown on the village map



△ Port Washington Road Acres H-26 A
 Plat 2A-164 Platted 2/17/1977
 Replat Tracts 18,19,20 H-26 A
 Plat 17-755 Platted 1/12/2001

LET IT BE KNOWN, THIS MAP HAS BEEN PREPARED AS A REFERENCE GUIDE TO PROPERTY OWNERSHIP. WE BELIEVE THIS INFORMATION TO BE CORRECT AND CURRENT, HOWEVER, IT IS NOT INTENDED FOR ANY LEGAL USE, WHETHER IT BE IN SALES, TRANSFERS, TRADES, LEASES OF ANY TYPE, ETC., AND DO NOT ACCEPT RESPONSIBILITY FOR ERRORS OF ANY NATURE OR OMISSIONS CONTAINED HEREIN.

T-9, R-7, Sec. 20
 HARDY TWP.
 SCALE 1" = 200'

Last Revision: 2/1/2004

H-26