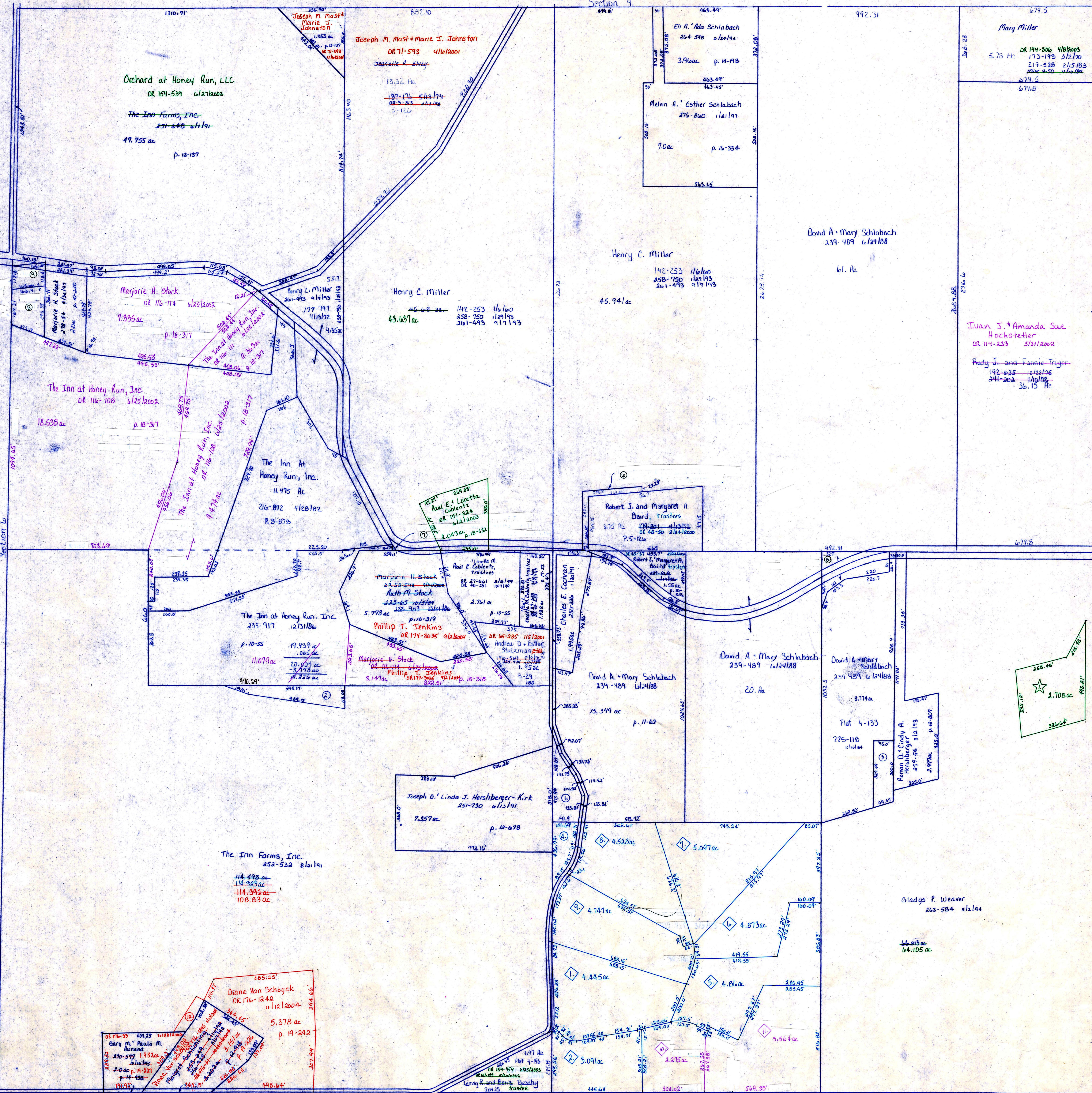


T.H. 317 30' NW
Old T.H. 183

T.H. 331 40' NW
Old T.H. 159

Section 4.



- ⊙ Joseph S. Linda J. Hershberger-Kirk 287-715 8/1/15 1106 ac p. 10-123
- ⊙ The Inn at Honey Run, Inc. 263-609 3/1/14 272 ac p. 11-221
- ⊙ Roman D. Cindy A. Hershberger 01-40-24 1/15/14 105 ac p. 13-261
- ⊙ The Inn Farms, Inc. 01-04-90 1/13/2000 808 ac p. 17-723

- ◆ Honey Run Village plot 17-746 platted 1/13/2000 Section 14 H-39A
- ◆ Replat of lots 3 & 4 plot 18-403 platted 1/13/2000
- ★ Hickory Spring Subdivision H-29 A Plot 18-702 platted 3/13/2003
- ◆ Robert Beverly Lee 01-05-254 1/16/2001

LET IT BE KNOWN, THIS MAP HAS BEEN PREPARED AS A REFERENCE GUIDE TO PROPERTY OWNERSHIP. WE BELIEVE THIS INFORMATION TO BE CORRECT AND CURRENT, HOWEVER, IT IS NOT INTENDED FOR ANY LEGAL USE, WHETHER IT BE IN SALES, TRANSFERS, TRUSTS, LEASES OF ANY TYPE, ETC., AND DO NOT ACCEPT RESPONSIBILITY FOR ERRORS OF ANY NATURE OR OMISSIONS CONTAINED HEREIN.

T-9, R-6, Sec. 7
HARDY TWP.
SCALE 1"=200'