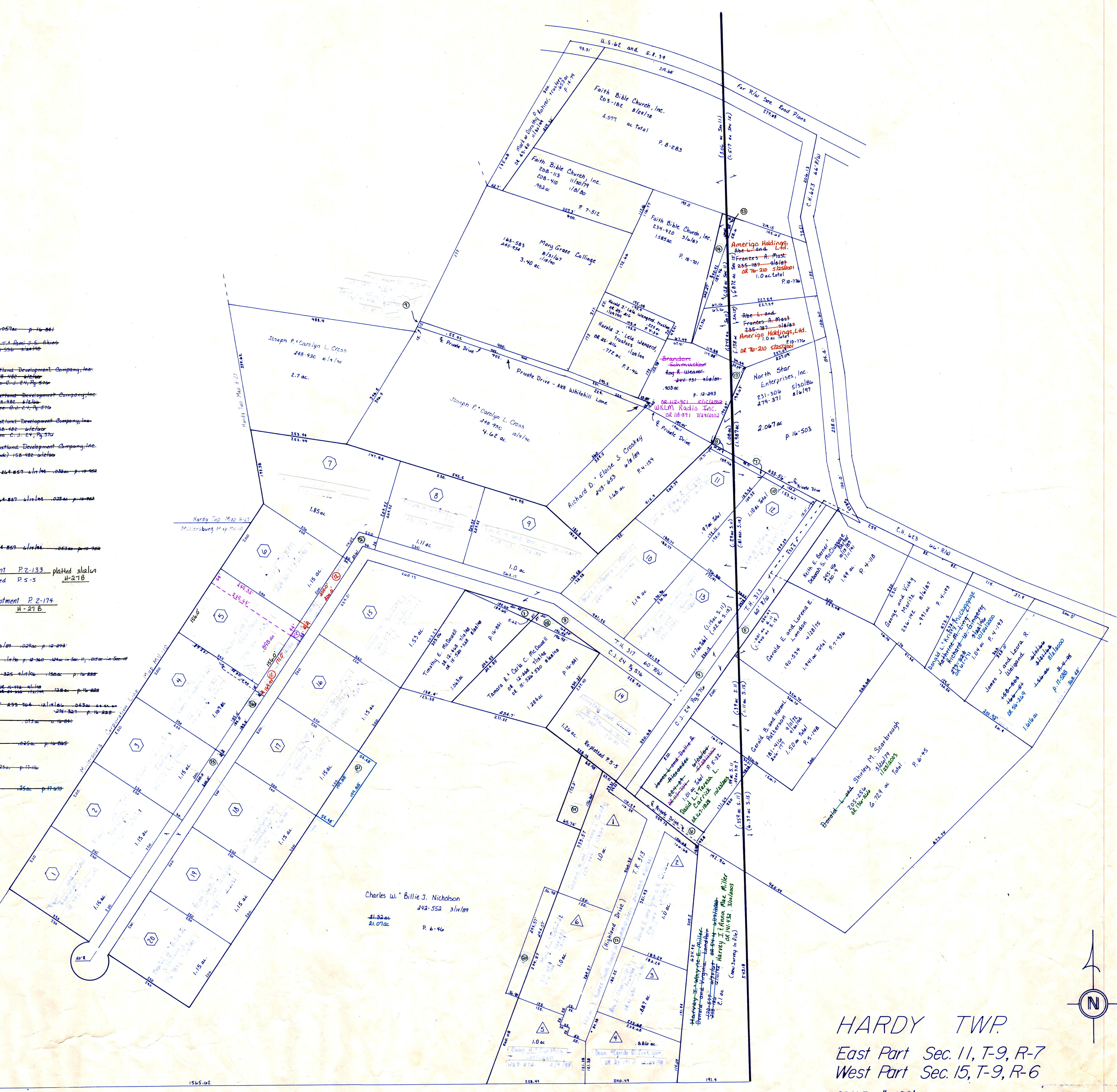


- ① Timothy E. McDowell  
of 15-524 election 067ac p. 14-841
- ② P. B. 21 East T. 9, R. 6, S. 14  
of 15-524 election 067ac p. 14-841
- ③ 2-04882 P. 2-133 Eastland Development Company, Inc.  
of 15-524 election 067ac p. 14-841
- ④ 0-00262 P. 2-133 Eastland Development Company, Inc.  
of 15-524 election 067ac p. 14-841
- ⑤ 5-40524 P. 2-133 Eastland Development Company, Inc.  
of 15-524 election 067ac p. 14-841
- ⑥ 1-17772 calculated Eastland Development Company, Inc.  
of 15-524 election 067ac p. 14-841
- ⑦ Lee N. Alma R. Keyse 264-257 election 028ac p. 10-288
- ⑧ Lee N. Alma R. Keyse 264-257 election 028ac p. 10-288
- ⑨ Lee N. Alma R. Keyse 264-257 election 028ac p. 10-288
- ⑩ Hilltop Acres Allotment P. 2-133 platted 34.6 ac  
Lot 14 Re-platted P. 5-5 H-27B
- ⑪ Highland Overlook Allotment P. 2-174  
Platted 41.180 H-27B
- ⑫ Roy R. Weaver 244-731 election 028ac p. 12-245
- ⑬ Abe L. and Frances A. Mast 245-934 1/16 p. 2-360 224 ac Sec. 11, T-9, R-6
- ⑭ Robert J. & Joan Ramsager 276-325 election 190ac p. 10-228
- ⑮ Elmer M. Sr. Karen Elizabeth Todd of 15-524 election 128ac p. 16-228
- ⑯ Sheldon D. & Blanche E. Schmucker 299-704 1/16 p. 2-360 224 ac Sec. 11, T-9, R-6
- ⑰ Tamara S. & Curtis C. McDowell of 15-524 election 075ac p. 10-247
- ⑱ Donald W. & Johanna L. Grundy of 15-524 election 025ac p. 10-285
- ⑲ Mary Ann Schmidt of 15-524 election 25ac p. 17-116
- ⑳ Donald S. & Betty J. Becker of 15-524 election 25ac p. 17-116



**HARDY TWP**  
 East Part Sec. 11, T-9, R-7  
 West Part Sec. 15, T-9, R-6  
 SCALE 1" = 100'

LET IT BE KNOWN, THIS MAP HAS BEEN PREPARED AS A REFERENCE GUIDE TO PROPERTY OWNERSHIP. WE BELIEVE THIS INFORMATION TO BE CORRECT AND CURRENT, HOWEVER, IT IS NOT INTENDED FOR ANY LEGAL USE, WHETHER IT BE IN SALES, TRANSFERS, TRADES, LEASES OF ANY TYPE, ETC., AND DO NOT ACCEPT RESPONSIBILITY FOR ERRORS OF ANY NATURE OR OMISSIONS CONTAINED HEREIN.

**H-27A**