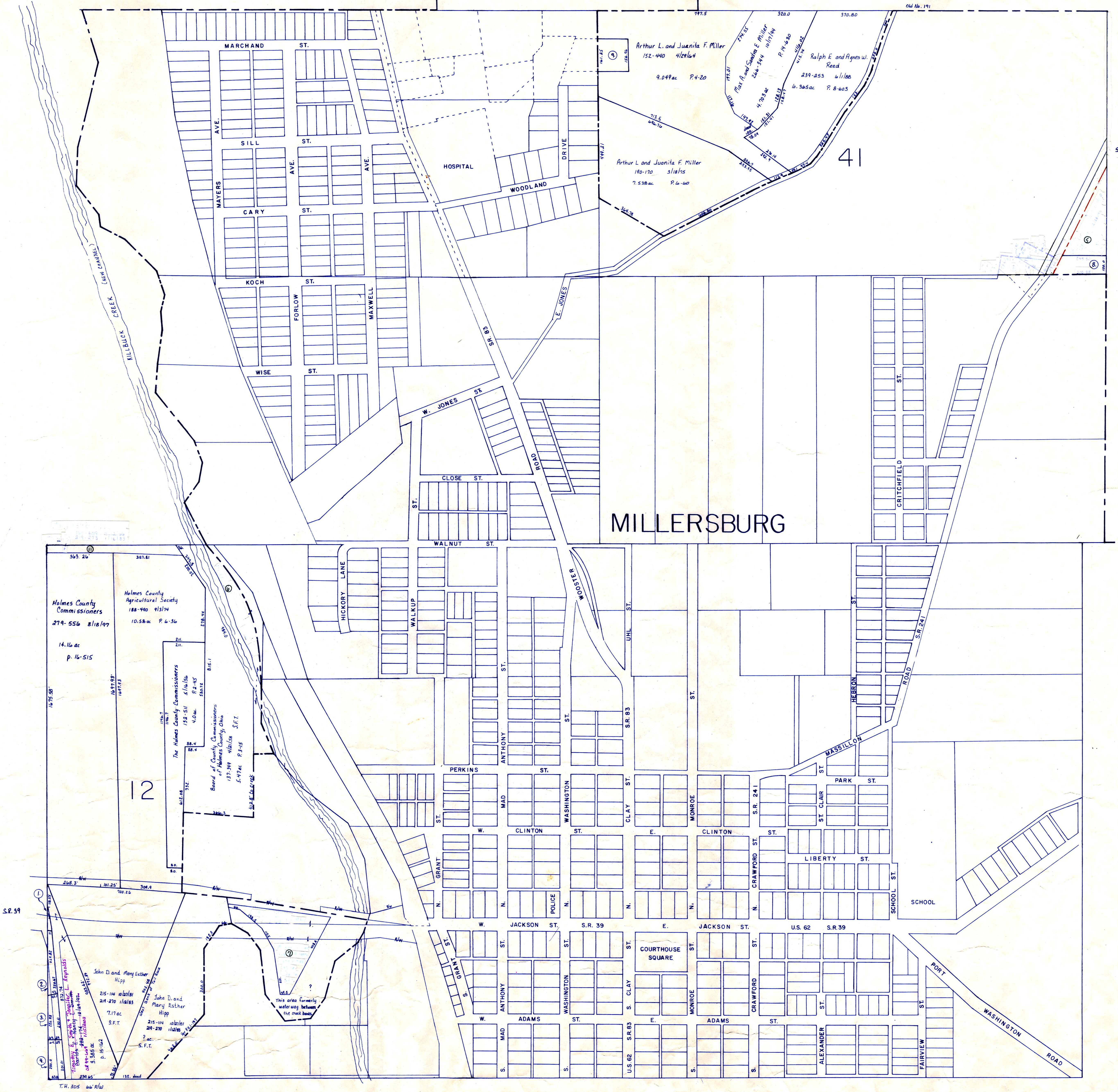


R/W Varies See Plat 2-306  
T.H. 332 40-1962  
Old No. 191



# MILLERSBURG



SCALE: 1"=200'

T-9, R-7, Sec. 12  
and Lot 41 1st Qtr.

HARDY TWP.  
HOLMES COUNTY, OHIO

LET IT BE KNOWN, THIS MAP HAS BEEN PREPARED AS A REFERENCE GUIDE TO PROPERTY OWNERSHIP. WE BELIEVE THIS INFORMATION TO BE CORRECT AND CURRENT, HOWEVER, IT IS NOT INTENDED FOR ANY LEGAL USE, WHETHER IT BE IN SALES, TRANSFERS, TRADES, LEASES OF ANY TYPE, ETC., AND DO NOT ACCEPT RESPONSIBILITY FOR ERRORS OF ANY NATURE OR OMISSIONS CONTAINED HEREIN.

# H-22