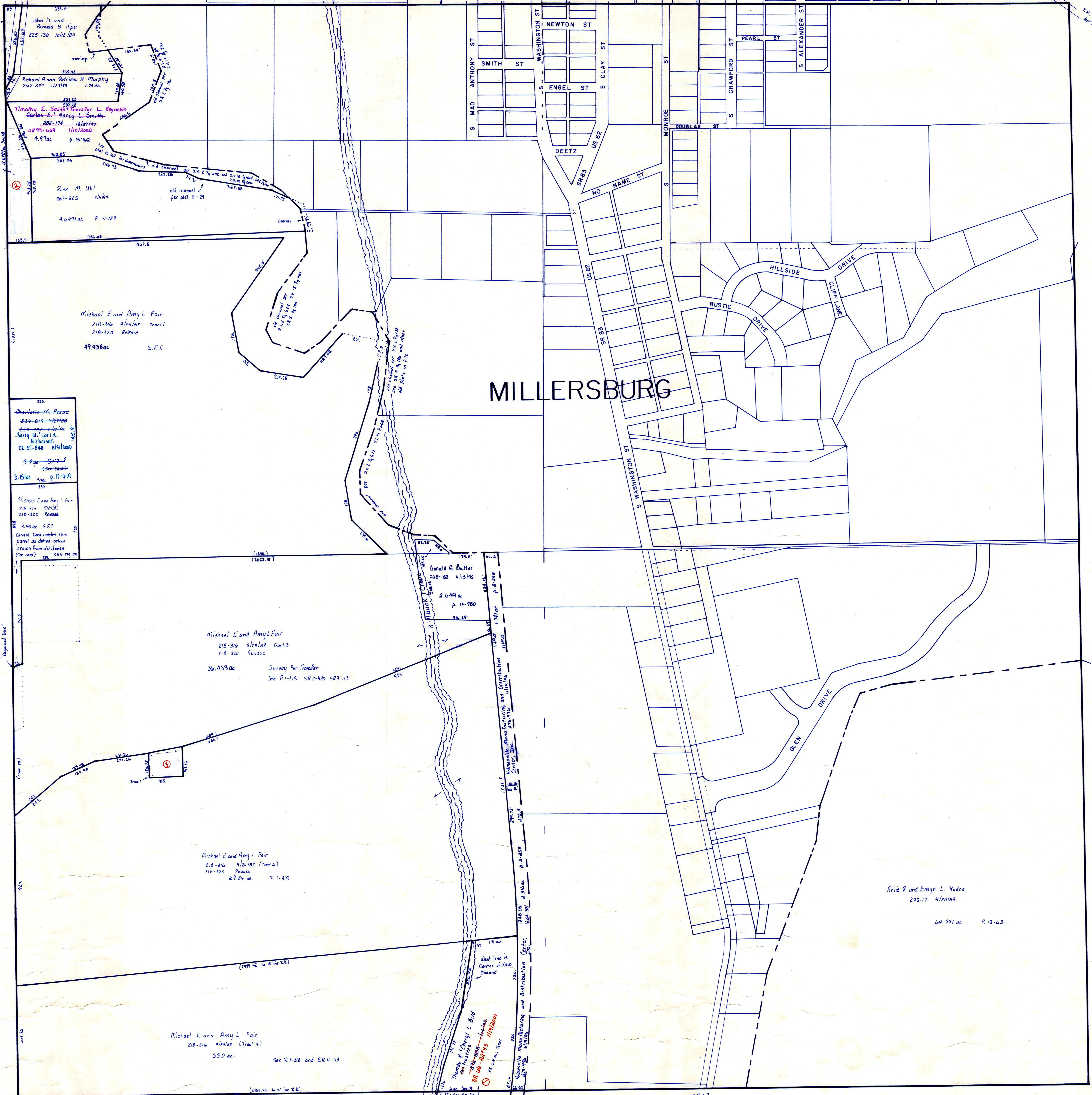


T.H. 305 64/2/0
old T.H. 247

Part
Washington Rd
T.H. 312
64/2/0



MILLERSBURG

330
 Charlotte M. Reese
 234-410-21210
 254-410-21210
 Barry W. Lark K.
 Nicholson
 DL 51-846 4111200
 9.20 ac S.F.T.
 (See map)
 3.151 ac 530 p. 11-119

330
 Michael E. and Amy L. Fair
 218-316 4124102
 218-320 Release
 3.140 ac S.F.T.
 Current deed includes this
 parcel as defined below
 drawn from old deeds
 (See map)

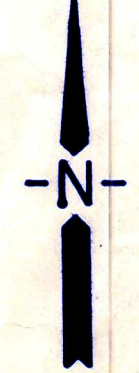
Michael E. and Amy L. Fair
 218-316 4124102 Tract 3
 218-320 Release
 36.433 ac Survey for Transfer
 See P. 1-318 SR 2-925 SR 4-113

Michael E. and Amy L. Fair
 218-316 4124102 (Tract 4)
 218-320 Release
 49.24 ac P. 1-518

Michael E. and Amy L. Fair
 218-316 4124102 (Tract 4)
 33.0 ac
 See P. 1-318 and SR 4-113

Donald G. Butler
 248-182 411146
 2.649 ac
 p. 14-780

Arlie R. and Evelyn L. Rodhe
 243-17 4120189
 44.991 ac P. 13-63



SCALE: 1" = 200'

T-9, R-7, Sec. 19

HARDY TWP.
HOLMES COUNTY, OHIO

LET IT BE KNOWN, THIS MAP HAS BEEN PREPARED
 AS A REFERENCE GUIDE TO PROPERTY OWNERSHIP.
 WE BELIEVE THIS INFORMATION TO BE CORRECT
 AND CURRENT, HOWEVER, IT IS NOT INTENDED
 FOR ANY LEGAL USE, WHETHER IT BE IN SALES,
 TRANSFERS, TRADES, LEASES OF ANY TYPE, ETC.,
 AND DO NOT ACCEPT RESPONSIBILITY FOR ERRORS
 OF ANY NATURE OR OMISSIONS CONTAINED HEREIN.

H-21