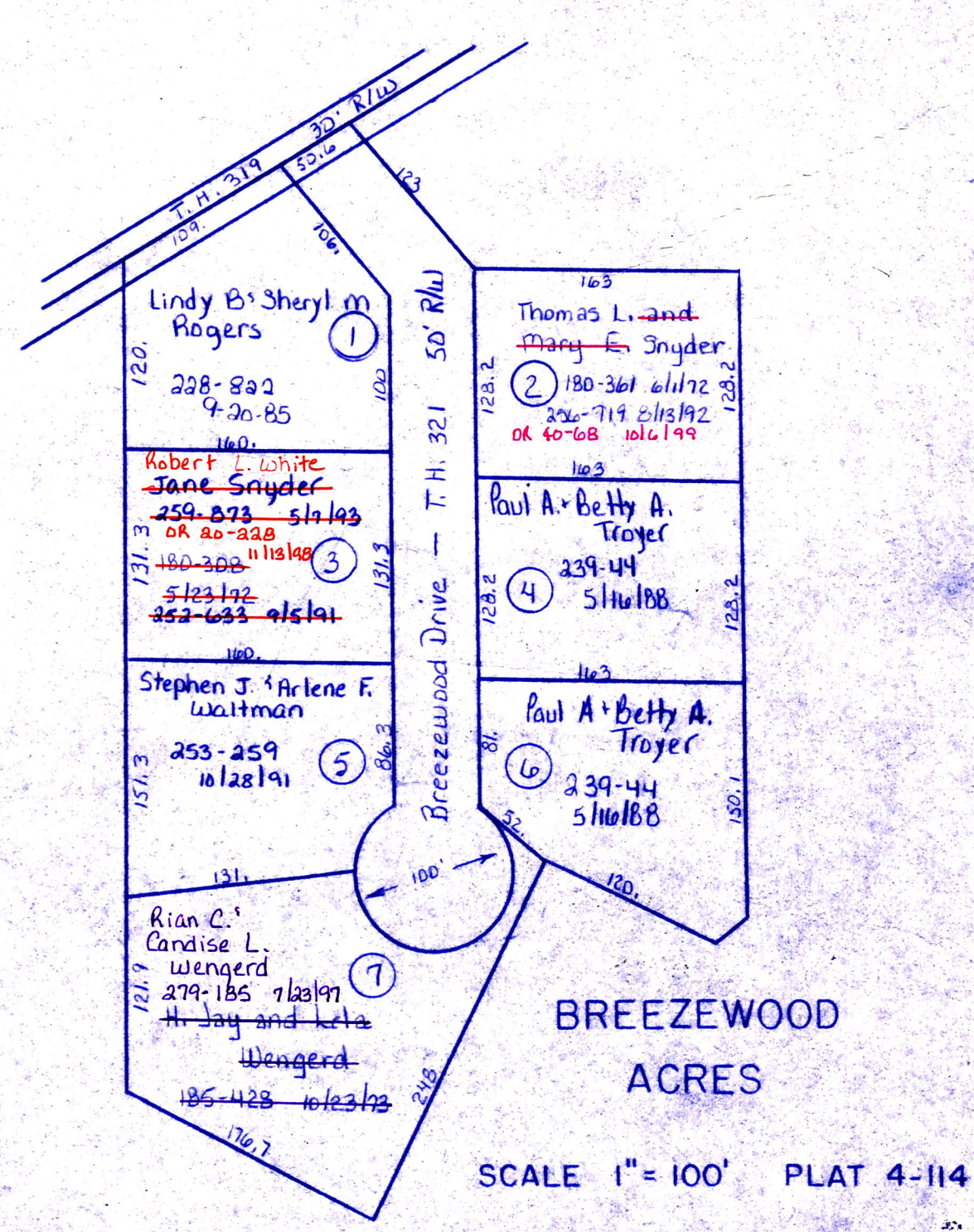


- (A) .24 ac. Waneta Carter
- (B) .73 ac. P. 4-66 217-679 3/19/82 Waneta Carter
- (C) .23 ac. P. 8-89 253-300 11/19/91 Loren R. Spice
- (D) .23 ac. P. 8-89 253-300 11/19/91 Loren R. Spice
- (E) .23 ac. P. 8-89 253-300 11/19/91 Loren R. Spice
- (F) .23 ac. P. 8-89 253-300 11/19/91 Loren R. Spice
- (G) .50 ac. Edward D. and Katherine E. Gensheimer P. 7-65 184-344 6/19/73
- (H) .10 ac. Moses R. Under Katze J. Under P. 7-508 191-668 8/21/85 and 216-674 4/15/82 266-881 11/21/86
- (I) Abe L. Frances A. Mast 235-787 11/8/81 .872 ac. p. 10-776
- (J) Abe L. Frances A. Mast 235-787 11/8/81 .958 ac. p. 10-776
- (K) Multi Products Co. 212-556 4/1/81 .056 ac. p. 5-137
- (L) Big Foot Developers 246-848 2/18/80 .64 ac. p. 12-407
- (M) Todd Raber 253-610 11/19/91 .909 ac. p. 12-802 of 32-309 2/21/91
- (N) John W. Sharon R. Byler 257-958 11/21/82 William W. Jr. Lori S. Byler P. 12-802
- (O) John W. Sharon R. Byler 257-958 11/21/82 John W. Sharon R. Byler 257-958 11/21/82
- (P) Myron E. Andrea L. Miller OR 17-376 9/30/88 .9455 ac. p. 16-869
- (Q) Myron E. Andrea L. Miller OR 17-376 9/30/88 .085 ac. p. 16-869
- (R) Myron E. Andrea L. Miller 274-666 8/16/86 .267 ac. p. 5-119
- (S) Alvin B. Sue Miller OR 17-374 9/30/88 .509 ac. p. 16-868
- (T) Mark S. Duncan OR 29-31 4/15/89 .594 ac. p. 2-292
- (U) John W. Sharon R. Byler OR 34-231 4/12/94 .106 ac. p. 17-246



See H-27A For Detailed Map

LET IT BE KNOWN THIS MAP HAS BEEN PREPARED AS A REFERENCE GUIDE TO PROPERTY OWNERSHIP. WE BELIEVE THIS INFORMATION TO BE CORRECT AND CURRENT. HOWEVER, IT IS NOT INTENDED FOR ANY LEGAL USE, WHETHER IT BE IN SALES, TRANSFERS, TRADES, LEASES OF ANY TYPE, ETC., AND DO NOT ACCEPT RESPONSIBILITY FOR ERRORS OF ANY NATURE OR OMISSIONS CONTAINED HEREIN.

T-9, R-6, Sec. 15
 HARDY TWP.
 SCALE 1"=200'

H-333