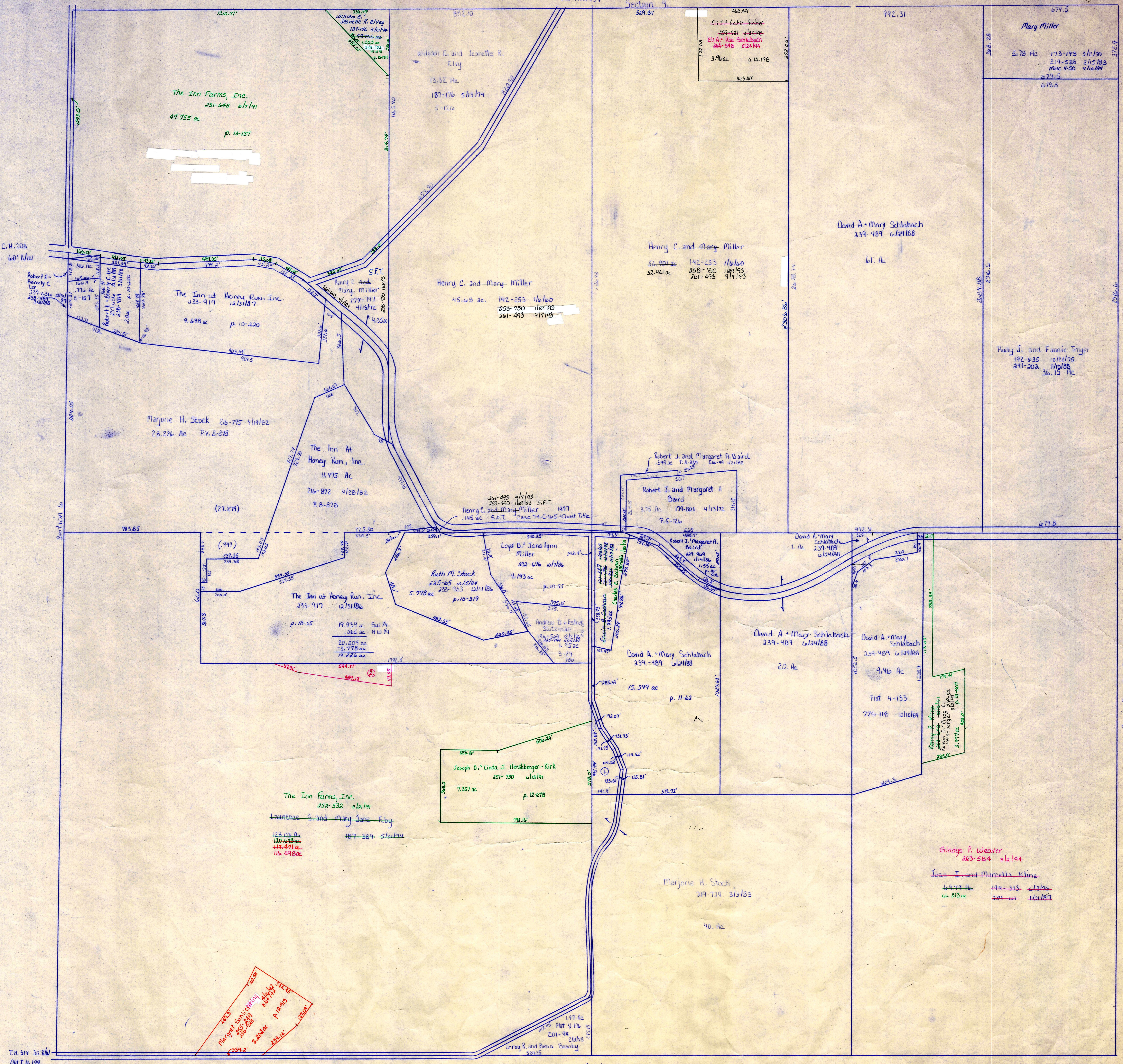


T.H. 327 30' NW
Old T.H. 115

T.H. 331 40' NW
Old T.H. 159

Section 4.



C.H. 203
60' NW

C.H. 203
60' NW

Section 8 T9-R6 Berlin Twp.

- ① Joseph S. & Linda J. Hershberger-Kirk 227-715 6/14/85 1106 ac p. 10-425
- ② The Inn at Honey Run, Inc. 263-857 8/24/84 973 ac p. 14-471

LET IT BE KNOWN, THIS MAP HAS BEEN PREPARED AS A REFERENCE GUIDE TO PROPERTY OWNERSHIP. WE BELIEVE THIS INFORMATION TO BE CORRECT AND CURRENT, HOWEVER, IT IS NOT INTENDED FOR ANY LEGAL USE, WHETHER IT BE IN SALES, TRANSFERS, TRADES, LEASES OF ANY TYPE, ETC., AND DO NOT ACCEPT RESPONSIBILITY FOR ERRORS OF ANY NATURE OR OMISSIONS CONTAINED HEREIN.

T-9, R-6, Sec. 7
HARDY TWP.
SCALE 1" = 200'



H-39