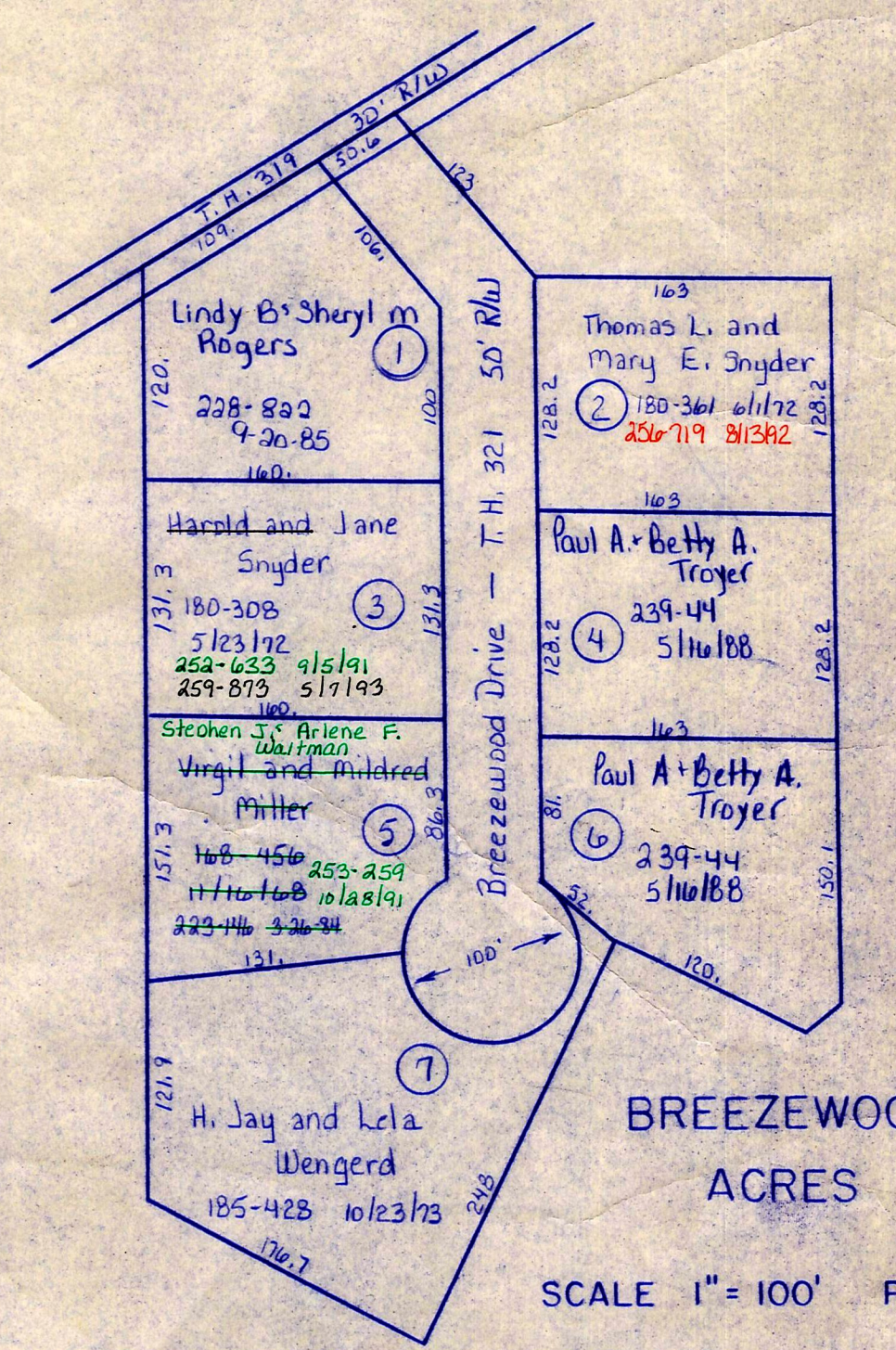


- (1) .24 ac Gerald Land Wanda Carter
P. 4-166 217-679 7/19/82
- (2) .73 ac Gerald Land Wanda Carter
P. 4-144 217-679 7/19/82
- (3) .23 ac Gerald Land Wanda Carter
P. 4-144 217-679 7/19/82
- (4) .23 ac Gerald Land Wanda Carter
P. 4-144 217-679 7/19/82
- (5) .23 ac Gerald Land Wanda Carter
P. 4-144 217-679 7/19/82
- (6) .63 ac Gerald Land Wanda Carter
P. 4-144 217-679 7/19/82
- (7) .50 ac Edward D. and Lorraine F. Geisminger
P. 7-65 184-344 6/19/73
- (8) .10 ac Moses R. Yoder & Katie S. Yoder
P. 7-508 191-662 8/27/85 and 216-674 4/15/82 266-831 1/29/84
- (9) Abe L. Frances A. Mast 235-787 1/15/89 .82 ac p. 10-776
- (10) Abe L. Frances A. Mast 235-787 1/15/89 .758 ac p. 10-776
- (11) Multi Products Co. 212-556 4/1/81 .83 ac p. 5-131
- (12) Big Foot Develop 246-848 4/1/81 .64 ac p. 12-407
- (13) Todd Raber 257-956 1/16/81 .90 ac p. 12-802
- (14) Alice J. Raber 257-956 1/16/81 1.105 ac p. 12-802



See H-27A
For Detailed Map

△ Duncan Allotment No. 1
PLAT 15-L platted 8/18/89
1. Leroy A. Duncan & Marie E. Semko
201-283 3/17/88 242-16 1/1/89, 261-280 8/18/89,
201-209 10/13/89

LET IT BE KNOWN, THIS MAP HAS BEEN PREPARED AS A REFERENCE GUIDE TO PROPERTY OWNERSHIP. WE BELIEVE THIS INFORMATION TO BE CORRECT AND CURRENT, HOWEVER, IT IS NOT INTENDED FOR ANY LEGAL USE, WHETHER IT BE IN SALES, TRANSFERS, TRADES, LEASES OF ANY TYPE, ETC., AND DO NOT ACCEPT RESPONSIBILITY FOR ERRORS OF ANY NATURE OR OMISSIONS CONTAINED HEREIN.

T-9, R-6, Sec. 15
HARDY TWP.
SCALE 1"=200'

H-33