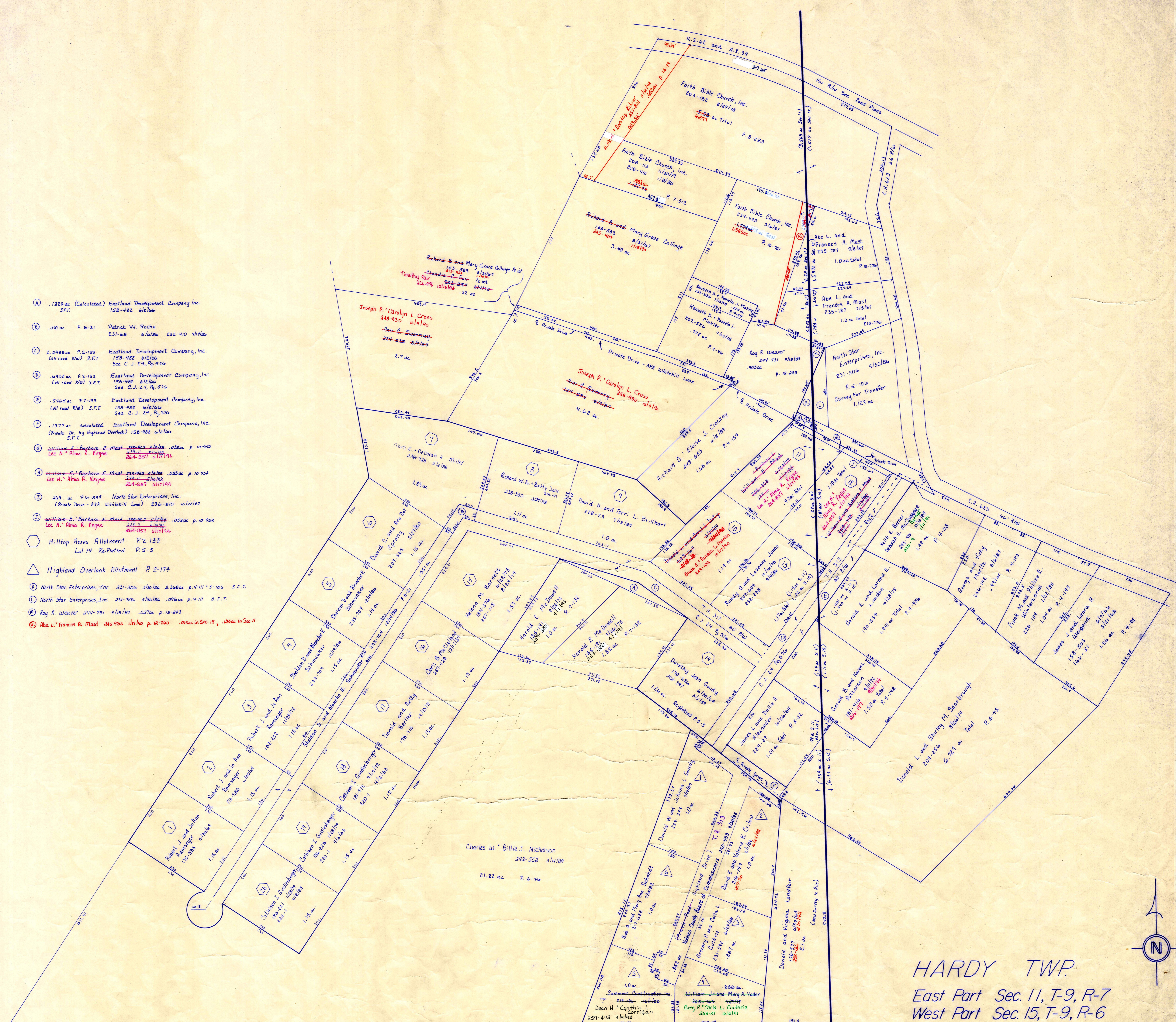


- Ⓐ .1224 ac (Calculated) Eastland Development Company, Inc. 158-482 6/2/66 S.F.T.
- Ⓑ .070 ac P. 2-21 Patrick W. Roche 231-08 5/18/66 232-410 9/18/66
- Ⓒ 2.0488 ac P. 2-133 Eastland Development Company, Inc. 158-482 6/2/66 (cell road R/W) S.F.T. See C.J. 24, Pg. 576
- Ⓓ .402 ac P. 2-133 Eastland Development Company, Inc. 158-482 6/2/66 (cell road R/W) S.F.T. See C.J. 24, Pg. 576
- Ⓔ .5465 ac P. 2-133 Eastland Development Company, Inc. 158-482 6/2/66 (cell road R/W) S.F.T. See C.J. 24, Pg. 576
- Ⓕ .1377 ac calculated Eastland Development Company, Inc. (Private Dr. by Highland Overlook) 158-482 6/2/66 S.F.T.
- Ⓖ William E. Barbara & Mast 238-922 5/18/66 .025 ac p. 10-952 Lec N. Alma R. Keyse 264-857 6/17/64
- Ⓗ William E. Barbara & Mast 238-922 5/18/66 .025 ac p. 10-952 Lec N. Alma R. Keyse 264-857 6/17/64
- Ⓘ .269 ac P. 10-859 North Star Enterprises, Inc. (Private Drive - RR Whitehill Lane) 236-810 11/22/67
- Ⓛ William E. Barbara & Mast 238-922 5/18/66 .052 ac p. 10-952 Lec N. Alma R. Keyse 264-857 6/17/64
- Ⓜ Hilltop Acres Allotment P. 2-133 Lot 14 Re-Platted P. 5-5
- Ⓝ Highland Overlook Allotment P. 2-174
- Ⓟ North Star Enterprises, Inc. 231-306 5/30/66 2.308 ac p. 4-111 5-106 S.F.T.
- Ⓠ North Star Enterprises, Inc. 231-306 5/30/66 .096 ac p. 4-111 5-106 S.F.T.
- Ⓡ Roy R. Weaver 244-731 9/18/69 .029 ac p. 12-293
- Ⓢ Abe L. Frances A. Mast 245-934 1/18/69 p. 2-360 .015 ac in Sec. 15, .024 ac in Sec. 11



HARDY TWP.
 East Part Sec. 11, T-9, R-7
 West Part Sec. 15, T-9, R-6
 SCALE 1"=100'

LET IT BE KNOWN, THIS MAP HAS BEEN PREPARED AS A REFERENCE GUIDE TO PROPERTY OWNERSHIP AND CURRENT, HOWEVER, IT IS NOT INTENDED FOR ANY LEGAL USE, WHETHER IT BE IN SALES, TRANSFERS, TRADES, LEASES OF ANY TYPE, ETC., AND DO NOT ACCEPT RESPONSIBILITY FOR ERRORS OF ANY NATURE OR OMISSIONS CONTAINED HEREIN.

H-27A