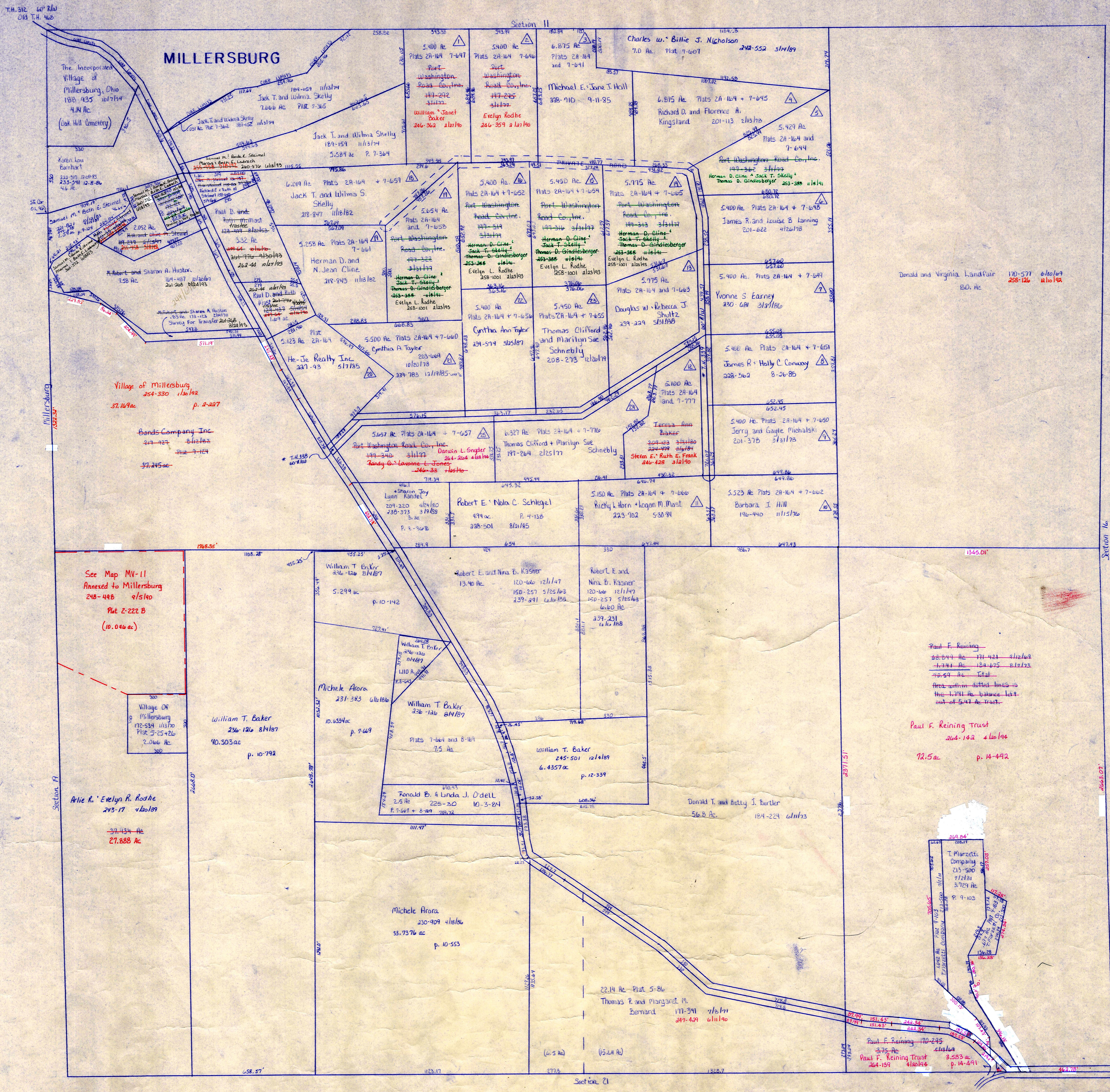


\* See deed 225-049 1/26/85. Also from some owners in Port Washington Road Allot. to Holmes County. Now known as T.H. 336 T.H. 339. See plat 11-24.



See Map MV-11  
Annexed to Millersburg  
248-448 8/5/80  
Plat 2-222 B  
(10.046 ac)

Paul F. Reining  
68-244 Ac 7/14/21 8/12/23  
7-741 Ac 12-4-25 8/12/25  
10.59 Ac Total  
Area within dotted lines is  
the 1.741 ac balance left  
out of 5.47 ac tract.

Paul F. Reining Trust  
264-142 4/26/94  
72.5 ac p. 14-492

T. Marzetti  
Company  
215-500  
7/2/81  
3.729 ac  
p. 9-102

LET IT BE KNOWN THIS MAP HAS BEEN PREPARED AS A REFERENCE GUIDE TO PROPERTY OWNERSHIP. WE BELIEVE THIS INFORMATION TO BE CORRECT AND CURRENT, HOWEVER, IT IS NOT INTENDED FOR ANY LEGAL USE, WHETHER IT BE IN SALES, TRANSFERS, TRADES, LEASES OF ANY TYPE, ETC., AND DO NOT ACCEPT RESPONSIBILITY FOR ERRORS OF ANY NATURE OR OMISSIONS CONTAINED HEREIN.

T-9, R-7, Sec. 20  
HARDY TWP.  
SCALE 1" = 200'