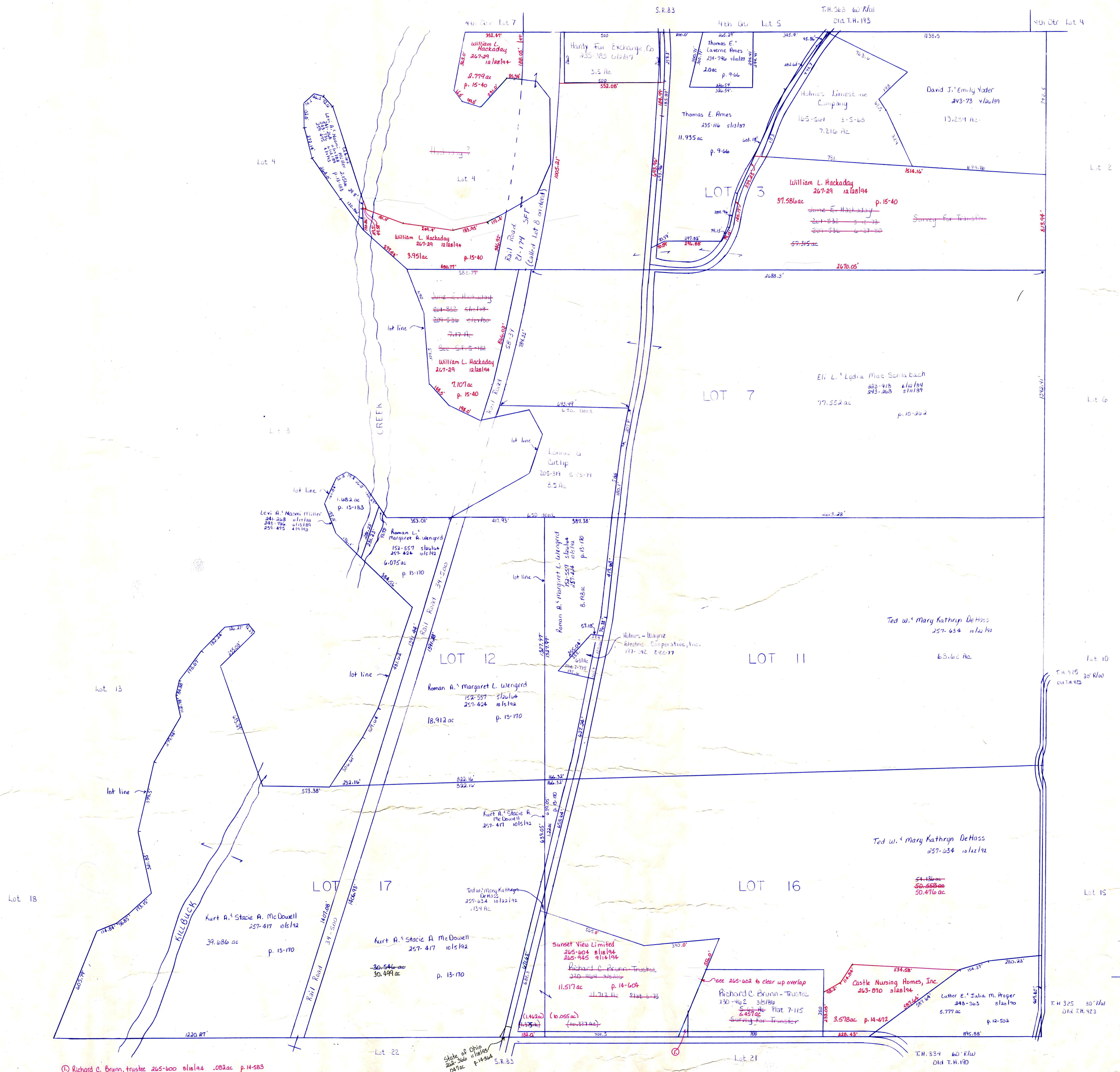


Prairie Township



© Richard C. Brunn, trustee 265-000 818194 .082 ac p. 14-583

State of Ohio
200-460
2041 ac
p. 14-584
S.R. 83

LET IT BE KNOWN, THIS MAP HAS BEEN PREPARED AS A REFERENCE GUIDE TO PROPERTY OWNERSHIP. WE BELIEVE THIS INFORMATION TO BE CORRECT AND CURRENT. HOWEVER, IT IS NOT INTENDED FOR ANY LEGAL USE, WHETHER IT BE IN SALES, TRANSFERS, TRADES, LEASES OF ANY TYPE, ETC., AND DO NOT ACCEPT RESPONSIBILITY FOR ERRORS OF ANY NATURE OR OMISSIONS CONTAINED HEREIN.

T-9, R-7, 1st Qtr.
Lots 3, 7, 11, 12, 16, 17
HARDY TWP.
SCALE 1" = 200'

PRINTED 4/9/93

H-24