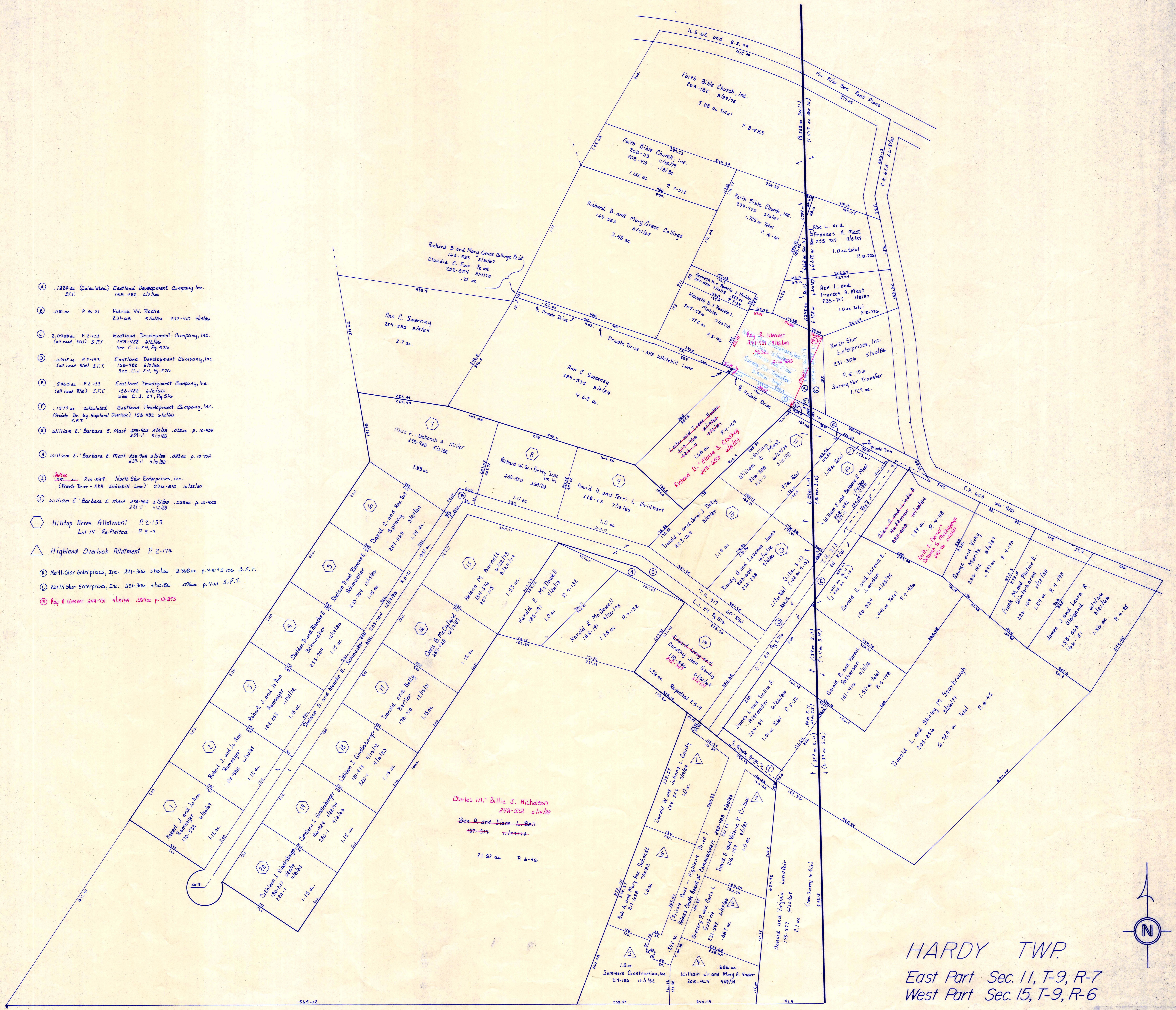


- (A) .1824 ac (Calculated) Eastland Development Company, Inc. S.F.T. 15B-482 6/2/66
- (B) .070 ac P. 6-21 Patrick W. Roche 231-108 5/16/80 232-410 4/18/80
- (C) 2.0488 ac P. 2-153 Eastland Development Company, Inc. 15B-482 6/2/66 (all road R/W) S.F.T. See C.J. 24, Pg. 576
- (D) .4402 ac P. 2-153 Eastland Development Company, Inc. 15B-482 6/2/66 (all road R/W) S.F.T. See C.J. 24, Pg. 576
- (E) .5465 ac P. 2-153 Eastland Development Company, Inc. 15B-482 6/2/66 (all road R/W) S.F.T. See C.J. 24, Pg. 576
- (F) .1377 ac (Calculated) Eastland Development Company, Inc. (Private Dr. by Highland Overlook) 15B-482 6/2/66 S.F.T.
- (G) William E. Barbara E. Mast 238-962 5/5/88 .032 ac p. 10-952 237-11 5/10/88
- (H) William E. Barbara E. Mast 238-962 5/5/88 .028 ac p. 10-952 237-11 5/10/88
- (I) ~~238-962~~ P. 10-859 North Star Enterprises, Inc. (Private Drive - A&B Whitehill Lane) 231a-810 10/22/87
- (J) William E. Barbara E. Mast 238-962 5/5/88 .053 ac p. 10-952 237-11 5/10/88
- (K) Hilltop Acres Allotment P. 2-133 Lot 14 Re-Platted P. 5-5
- (L) Highland Overlook Allotment P. 2-174
- (M) North Star Enterprises, Inc. 231-306 5/30/86 2.368 ac p. 4-111 5-106 S.F.T.
- (N) North Star Enterprises, Inc. 231-306 5/30/86 .096 ac p. 4-111 S.F.T.
- (O) Roy E. Weaver 244-731 4/18/89 .089 ac p. 12-293



HARDY TWP.
 East Part Sec. 11, T-9, R-7
 West Part Sec. 15, T-9, R-6
 SCALE 1" = 100'

LET IT BE KNOWN, THIS MAP HAS BEEN PREPARED AS A REFERENCE GUIDE TO PROPERTY OWNERSHIP. WE BELIEVE THIS INFORMATION TO BE CORRECT AND CURRENT, HOWEVER, IT IS NOT INTENDED FOR ANY LEGAL USE, WHETHER IT BE IN SALES, TRANSFERS, TRACES, LEASES OF ANY TYPE, ETC., AND DO NOT ACCEPT RESPONSIBILITY FOR ERRORS OF ANY NATURE OR OMISSIONS CONTAINED HEREIN.

H-27A