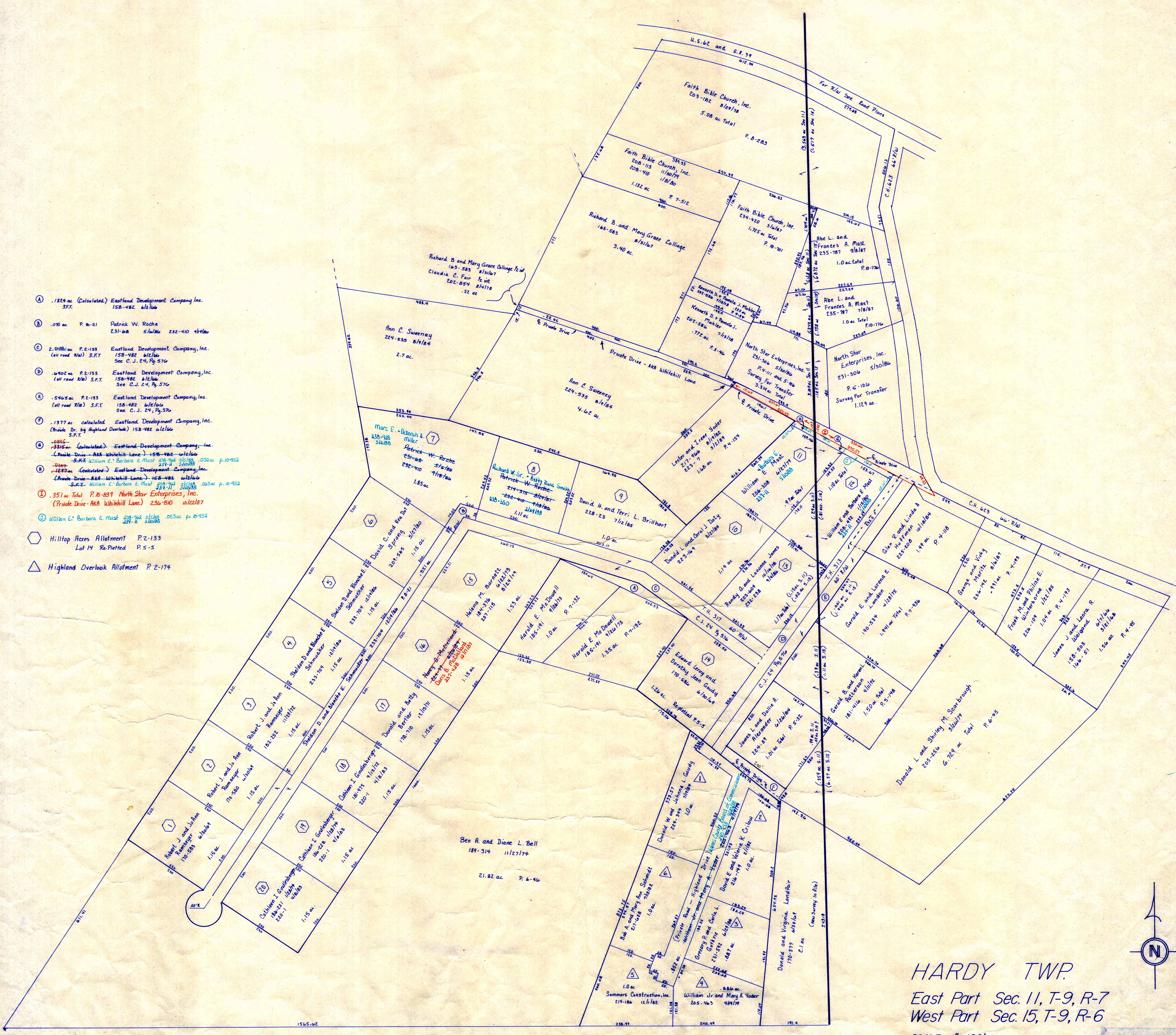
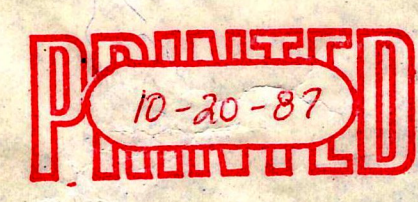
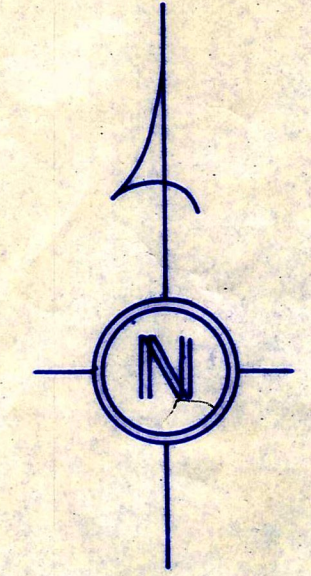


- Ⓐ .1824 ac. (Calculated) Eastland Development Company, Inc. S.F.T. 158-482 8/2/68
- Ⓑ .070 ac. P. 8-21 Patrick W. Roche 231-828 5/6/76 232-410 11/18/76
- Ⓒ 2.098 ac. P. 2-133 Eastland Development Company, Inc. (all road R/W) S.F.T. 158-482 8/2/68 See C.J. 24, Pg. 576
- Ⓓ .940 ac. P. 2-133 Eastland Development Company, Inc. (all road R/W) S.F.T. 158-482 8/2/68 See C.J. 24, Pg. 576
- Ⓔ .540 ac. P. 2-133 Eastland Development Company, Inc. (all road R/W) S.F.T. 158-482 8/2/68 See C.J. 24, Pg. 576
- Ⓕ .1377 ac. calculated Eastland Development Company, Inc. (Private Dr. by Highland Overlook) 158-482 8/2/68 S.F.T.
- ⑦ .0816 ac. (Calculated) Eastland Development Company, Inc. (Private Drive - NMA Whitkhill Lane) 158-482 8/2/68 S.F.T. See William E. Barbara E. Mast 231-11 5/16/83
- ⑧ .1824 ac. (Calculated) Eastland Development Company, Inc. (Private Drive - NMA Whitkhill Lane) 158-482 8/2/68 S.F.T. See William E. Barbara E. Mast 231-11 5/16/83
- ⑨ .351 ac. Total P. 8-239 North Star Enterprises, Inc. (Private Drive - NMA Whitkhill Lane) 236-810 10/22/87
- ⑩ William E. Barbara E. Mast 231-11 5/16/83 053 ac. P. 10-954 5/16/83
- Ⓗ Hilltop Acres Allotment P. 2-133 Lot 14 Re-Platted P. 5-5
- Ⓙ Highland Overlook Allotment P. 2-174



HARDY TWP.
East Part Sec. 11, T-9, R-7
West Part Sec. 15, T-9, R-6
SCALE 1"=100'



LET IT BE KNOWN, THIS MAP HAS BEEN PREPARED AS A REFERENCE GUIDE TO PROPERTY OWNERSHIP. WE BELIEVE THIS INFORMATION TO BE CORRECT AND CURRENT. HOWEVER, IT IS NOT INTENDED FOR ANY LEGAL USE, WHETHER IT BE IN SALES, TRANSFERS, TRADES, LEASES OF ANY TYPE, ETC., AND DO NOT ACCEPT RESPONSIBILITY FOR ERRORS OF ANY NATURE OR OMISSIONS CONTAINED HEREIN.

H-27A