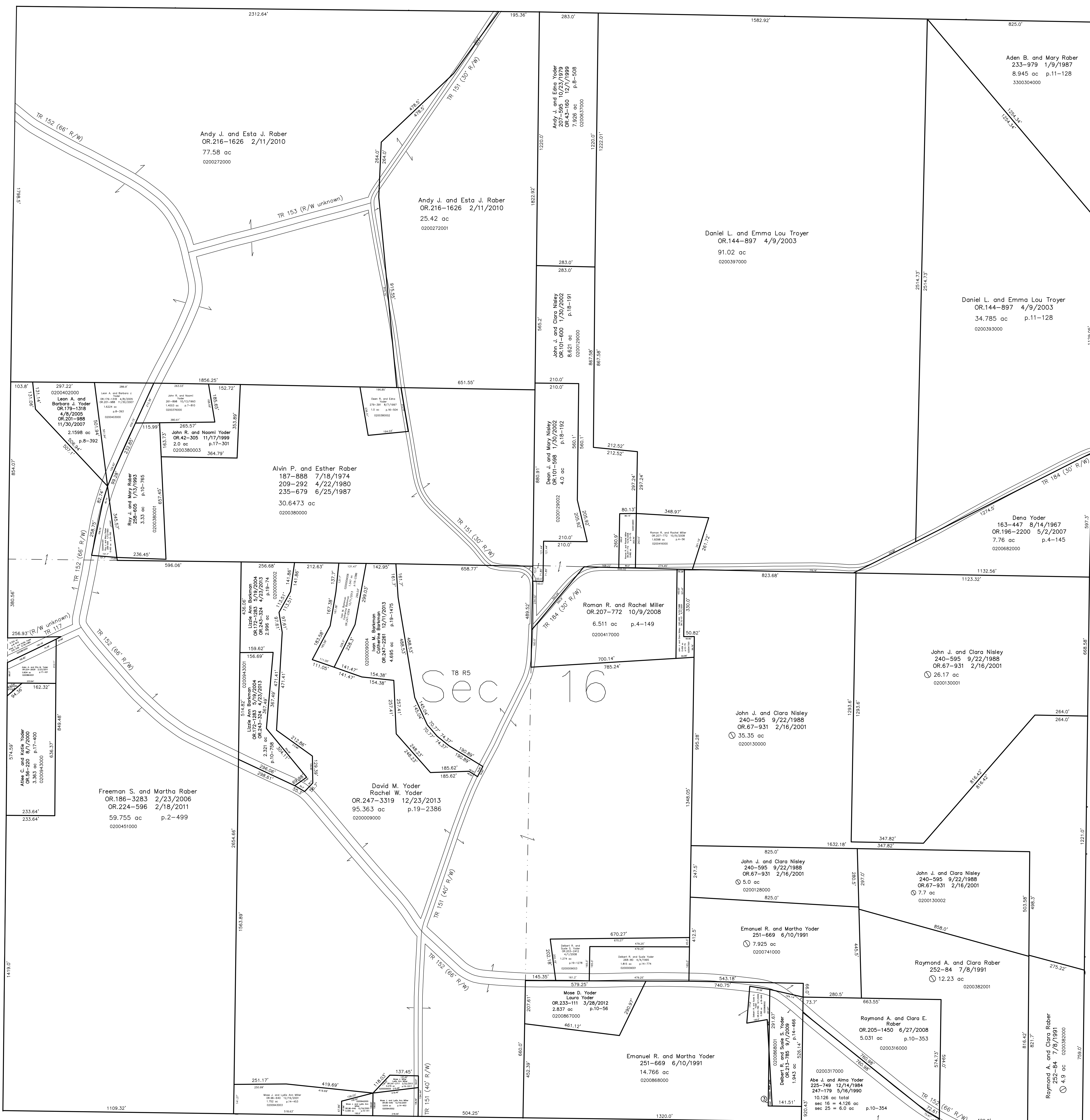


0200943004 2 Allee C. and Katie Yoder
OR.16-220 8/7/2000
0.051 ac p.17-400
0200880003 3 Emanuel R. and Martha Yoder
OR.168-3314 12/17/2003
0.059 ac p.16-845

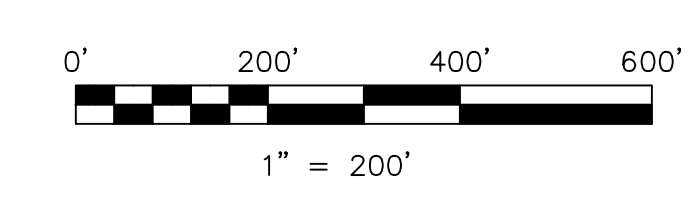


Mechanic Township T8, R6, Sec. 20 MC-34

T8, R5, Sec. 17 C-07

Last Revision: 12/23/2013

T-8, R-5, Sec.16
Clark Twp.
Holmes County, Ohio



LET IT BE KNOWN, THIS MAP HAS BEEN PREPARED AS A REFERENCE GUIDE TO PROPERTY OWNERSHIP. WE BELIEVE THIS INFORMATION TO BE CORRECT AND CURRENT, HOWEVER IT IS NOT INTENDED FOR ANY LEGAL USE, WHETHER IT BE IN SALES, TRANSFERS, TRADES, LEASES OF ANY TYPE, ETC., AND DO NOT ACCEPT RESPONSIBILITY FOR ERRORS OF ANY NATURE OR OMISSIONS CONTAINED HEREIN.

new survey required for next transfer

C-02

