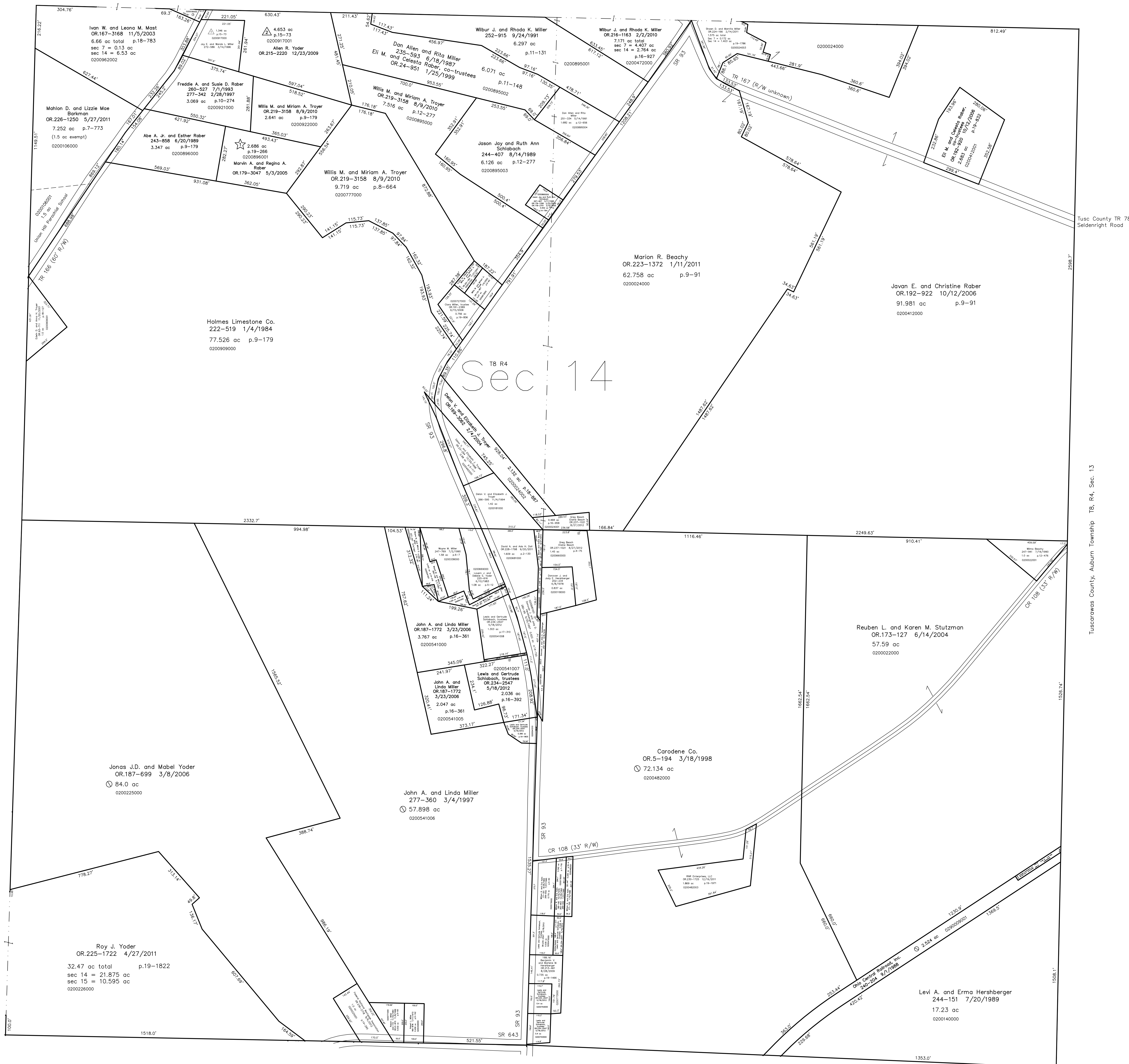


- 0200541004 ① Wayne M. and Wilma D. Miller
277-357 3/4/1997
0.06 ac p.16-361
- 0200541009 ② Lewis and Gertrude Schlobach, trustees
OR.234-2547 5/18/2012
0.05 ac p.17-310
- 0200108002 ③ Marilyn Kay Wengert
OR.124-492 10/3/2002
0.13 ac p.18-400
- 0200482002 ④ Greg Beach and Elaine Beach
OR.237-1021 8/27/2012
0.06 ac p.18-866



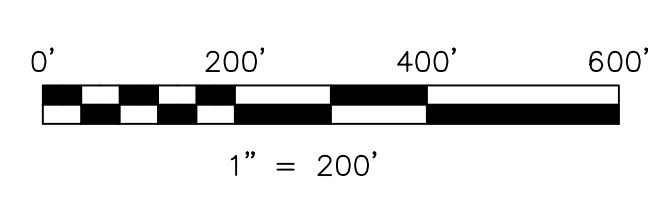
T8, R5, Sec. 15 C-28

Tuscarawas County, Auburn Township T8, R4, Sec. 13

- ★ Mabee Subdivision
Plat 19-266 Platted 12/7/2004
- △ Union Valley Hilltop View Allotment No.1
Plat 15-73 Platted 12/19/1995

Last Revision: 8/27/2012

T-8, R-4, Sec.14
Clark Twp.
Holmes County, Ohio



LET IT BE KNOWN, THIS MAP HAS BEEN PREPARED AS A REFERENCE GUIDE TO PROPERTY OWNERSHIP. WE BELIEVE THIS INFORMATION TO BE CORRECT AND CURRENT, HOWEVER IT IS NOT INTENDED FOR ANY LEGAL USE, WHETHER IT BE IN SALES, TRANSFERS, TRADES, LEASES OF ANY TYPE, ETC., AND DO NOT ACCEPT RESPONSIBILITY FOR ERRORS OF ANY NATURE OR OMISSIONS CONTAINED HEREIN.

Ⓞ new survey required for next transfer

C-33

