

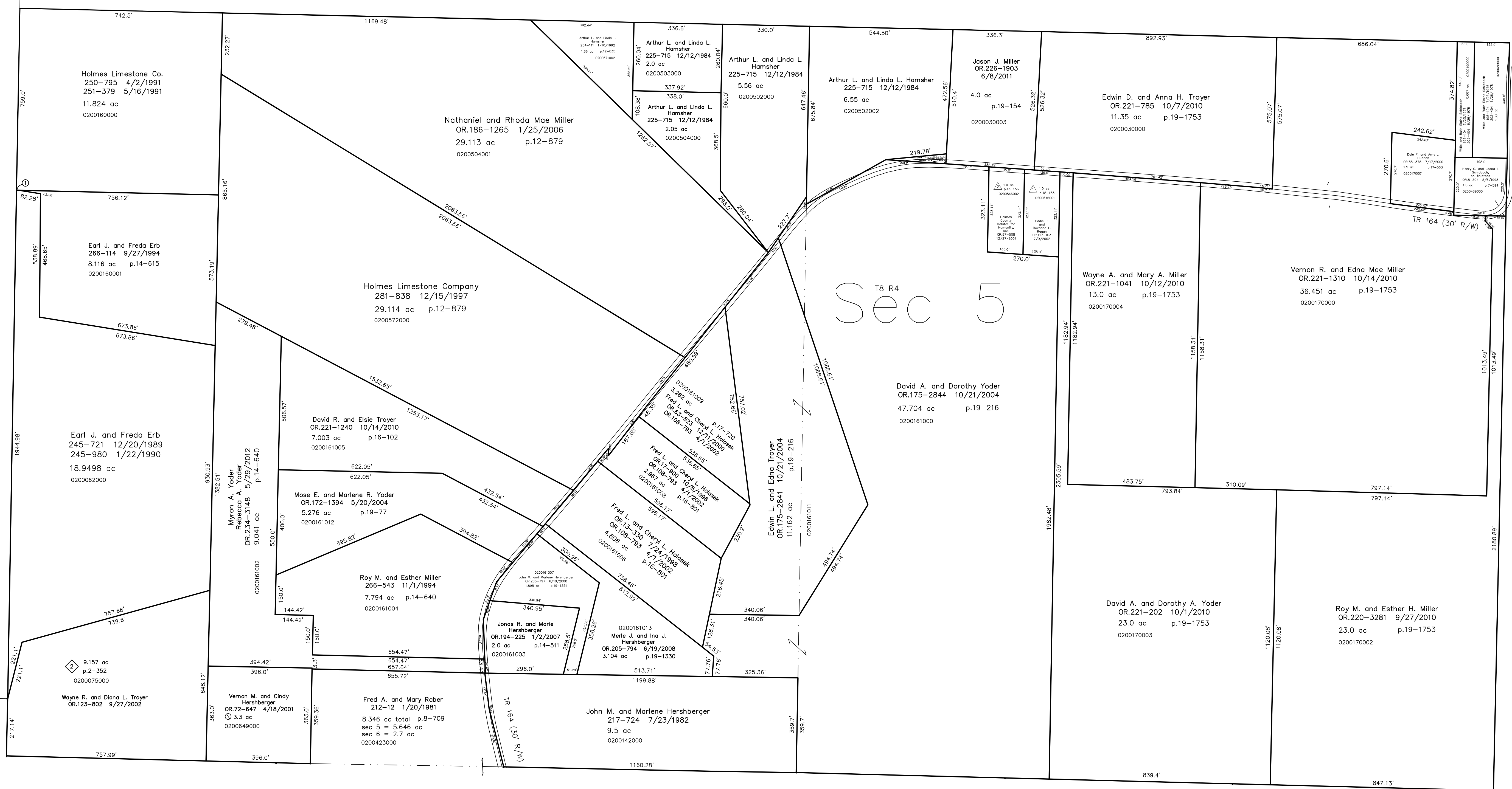
0200063003 Holmes Limestone Co.
266-116 9/27/1994
0.0002 ac p.14-615

T8, R5, Sec. 1 C-25

T8, R4, Sec. 10
C-24

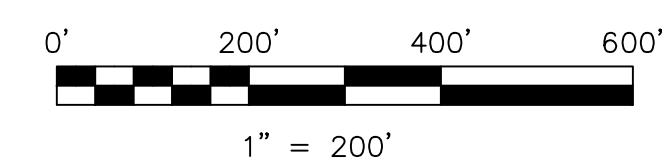
Walnut Creek Township T8, R4, Sec. 5 (north 1/2) WC-18

T8, R4, Sec. 4 C-35



T8, R4, Sec. 6 C-29

- ◇ Dusty Trail Subdivision
Plot 2-352 Platted 8/9/2002
- △ Troyer's Habitat
Plot 18-153 Platted 12/19/2001



LET IT BE KNOWN, THIS MAP HAS BEEN PREPARED AS A REFERENCE GUIDE TO PROPERTY OWNERSHIP. WE BELIEVE THIS INFORMATION TO BE CORRECT AND CURRENT, HOWEVER IT IS NOT INTENDED FOR ANY LEGAL USE, WHETHER IT BE IN SALES, TRANSFERS, TRADES, LEASES OF ANY TYPE, ETC., AND DO NOT ACCEPT RESPONSIBILITY FOR ERRORS OF ANY NATURE OR OMISSIONS CONTAINED HEREIN.

○ new survey required for next transfer

Last Revision: 5/29/2012

T-8, R-4, Sec.5 (south 1/2)
Clark Twp.
Holmes County, Ohio

C-30

