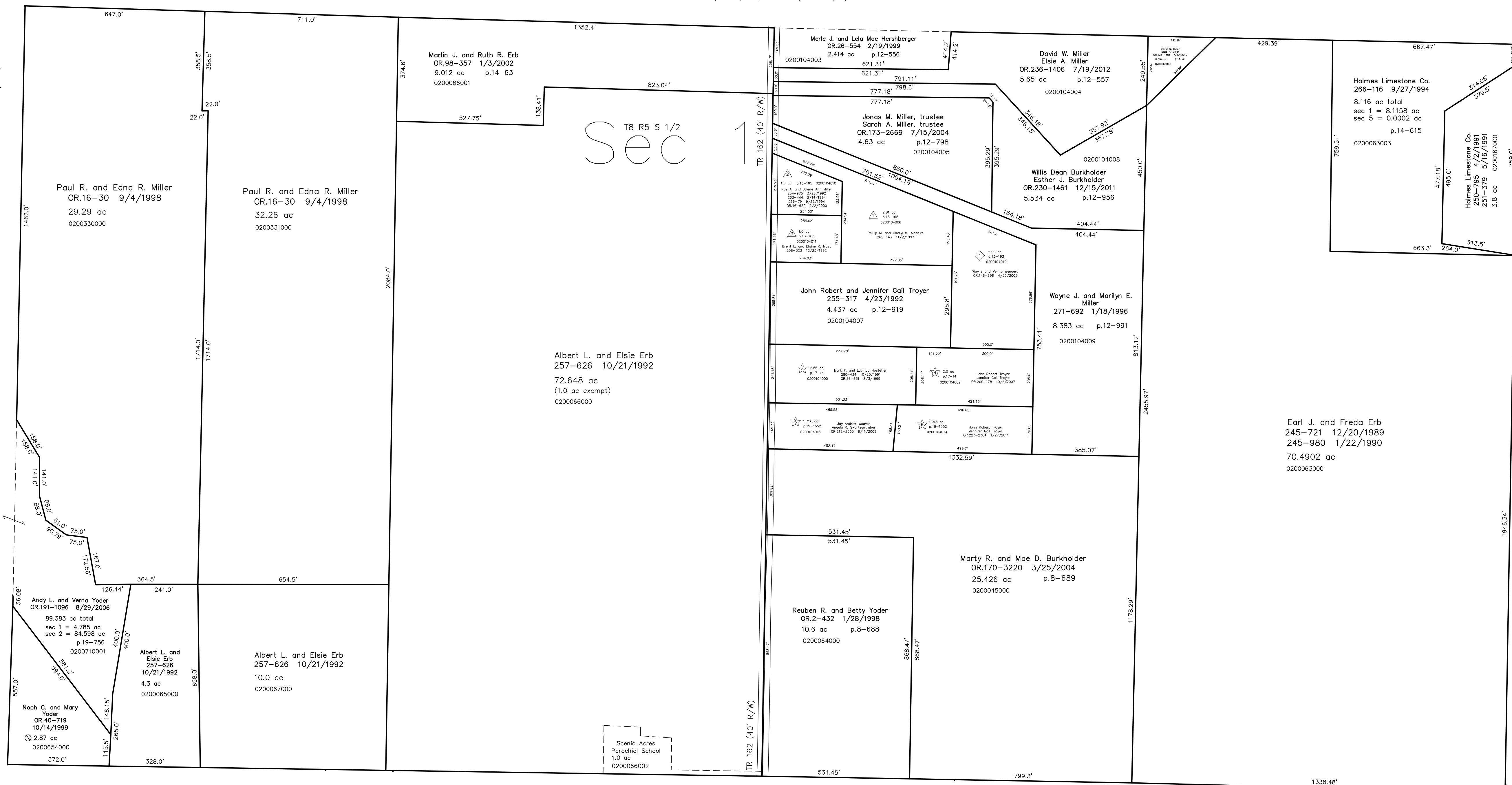


T8, R5, Sec. 2 C-20

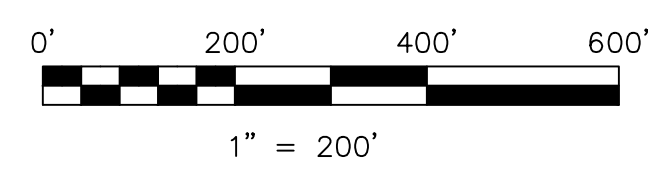
Walnut Creek Township T8, R5, Sec. 1 (north 1/2) WC-12



T8, R4, Sec. 5 C-30

T8, R5, Sec. 10 C-24

- ◆ Henry J. Miller Allotment No.1  
Plat 13-193 Platted 6/29/1993
- ▲ Mt. Zion Estates Allotment No.1  
Plat 13-165 Platted 8/11/1992
- ★ Marion E. Beachy Allotment No.1  
Plat 15-147 Platted 9/30/1997
- Replotting of Lot 1  
Plat 17-14 Platted 3/1/1999
- Replot of Lot 2  
Plat 19-1552 Platted 7/29/2009



LET IT BE KNOWN, THIS MAP HAS BEEN PREPARED AS A REFERENCE GUIDE TO PROPERTY OWNERSHIP. WE BELIEVE THIS INFORMATION TO BE CORRECT AND CURRENT, HOWEVER IT IS NOT INTENDED FOR ANY LEGAL USE, WHETHER IT BE IN SALES, TRANSFERS, TRADES, LEASES OF ANY TYPE, ETC., AND DO NOT ACCEPT RESPONSIBILITY FOR ERRORS OF ANY NATURE OR OMISSIONS CONTAINED HEREIN.

○ new survey required for next transfer

Last Revision: 7/19/2012

**T-8, R-5, Sec.1 (south 1/2)**  
**Clark Twp.**  
**Holmes County, Ohio**

**C-25**

