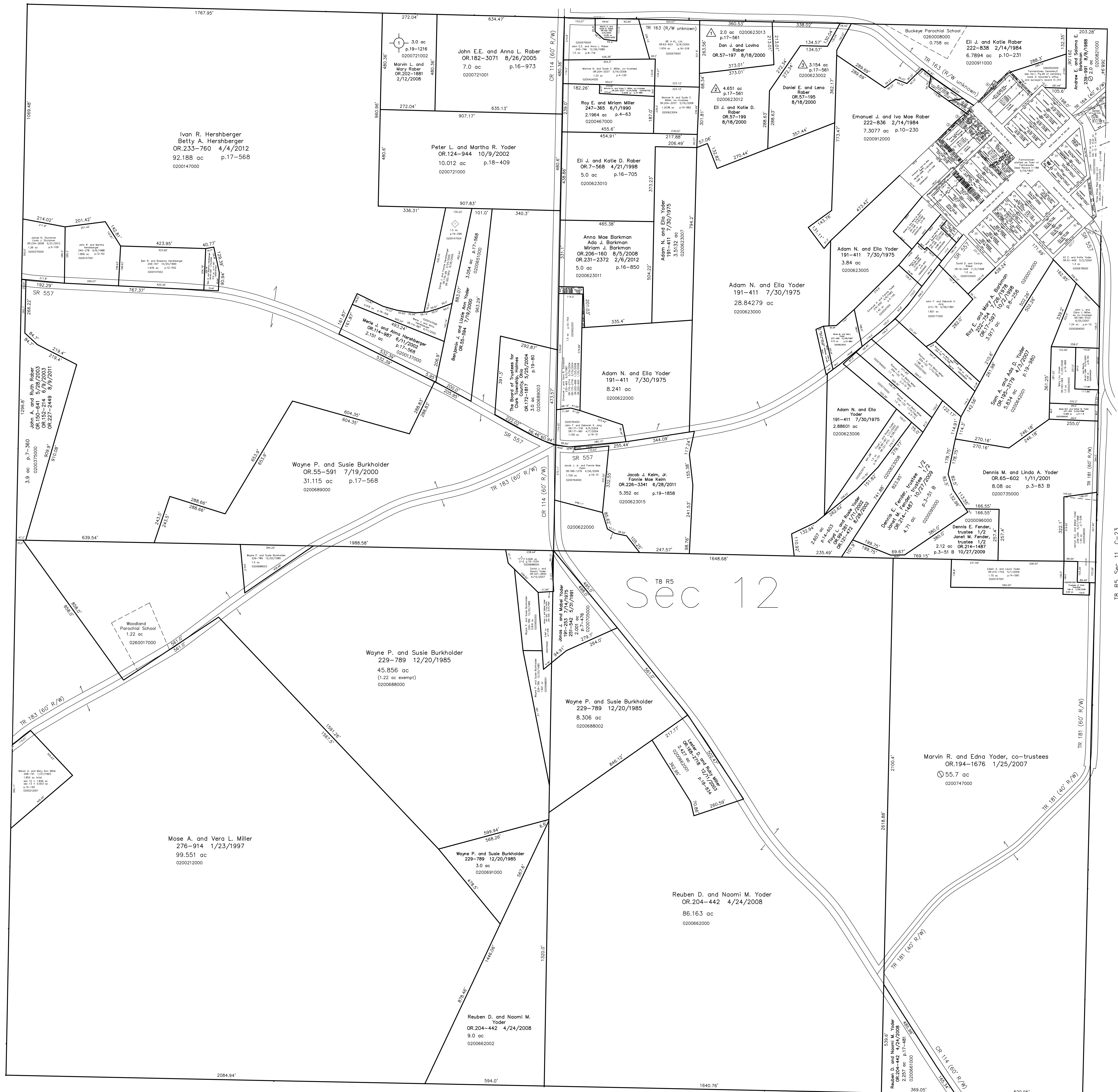


- 0200719000 ① Levi M. and Fannie Yoder  
193-580 3/30/1976  
235-548 8/10/1992  
0.074 ac p.7-589
- 0200912008 ② Andrew E. and Saloma E. Barkman  
OR.206-2188 9/8/2008  
0.006 ac p.19-1348
- 0200912006 ③ Emanuel J. and Iva Mae Rober  
OR.205-3296 7/30/2008  
0.003 ac p.19-1348
- 0200911001 ④ Abe J. and Sarah Rober  
Robert A. and Miriam M. Rober  
OR.216-959 2/1/2010  
0.02 ac p.19-1635
- 0200851002 ⑤ Trustees of Clark Township  
264-479 5/17/1994  
0.009 ac p.14-512  
nw pt lot 16 of Farmerstown
- 0201060000 ⑥ Trustees of Clark Township  
resolution to vacate 264-728 6/7/1994  
0.08 ac p.14-525
- 0201005000 ⑦ Board of Township Trustees of Clark Township  
resolution to vacate 264-728 6/7/1994  
0.008 ac p.14-525
- 0201027000 ⑧ Eli J. and Katie Rober  
OR.212-2762 8/14/2009  
0.01 ac p.19-1567
- 0201025000 ⑨ Emanuel J. and Iva Mae Rober  
OR.203-3042 4/11/2008  
0.013 ac p.19-1267
- 0201026000 ⑩ Emanuel J. and Iva Mae Rober  
OR.205-3293 7/30/2008  
0.004 ac p.19-1267
- 0201023000 ⑪ Emanuel J. and Iva Mae Rober  
OR.203-3042 4/11/2008  
0.01 ac p.19-1267
- 0200973002 ⑫ Marvin R. and Edna Yoder, co-trustees  
OR.194-1676 1/25/2007  
0.016 ac p.12-729

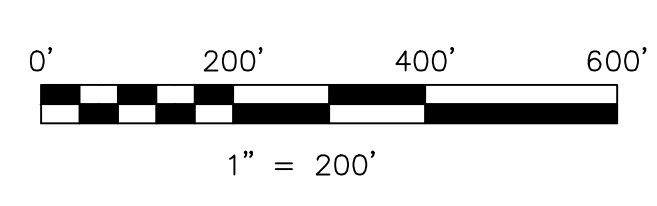


T8, R5, Sec. 13 C-13

T8, R5, Sec. 11 C-23

# Sec 12

- ◇ D & F's Hillside Acres Subdivision  
Plot 19-298 Platted 2/1/2005
- △ Eli J. & Katie D. Rober Subdivision  
Plot 17-561 Platted 7/17/2000
- Farmer's Ridge Subdivision  
Plot 19-1216 Platted 12/28/2007
- ☆ Valley Estates Subdivision  
Plot 19-1034 Platted 5/25/2007



LET IT BE KNOWN, THIS MAP HAS BEEN PREPARED AS A REFERENCE GUIDE TO PROPERTY OWNERSHIP. WE BELIEVE THIS INFORMATION TO BE CORRECT AND CURRENT, HOWEVER IT IS NOT INTENDED FOR ANY LEGAL USE, WHETHER IT BE IN SALES, TRANSFERS, TRUSTS, LEASES OF ANY TYPE, ETC., AND DO NOT ACCEPT RESPONSIBILITY FOR ERRORS OF ANY NATURE OR OMISSIONS CONTAINED HEREIN.

new survey required for next transfer

Last Revision: 12/28/2012

**T-8, R-5, Sec.12**  
**Farmerstown Village**  
**Clark Twp.**  
**Holmes County, Ohio**

# C-18