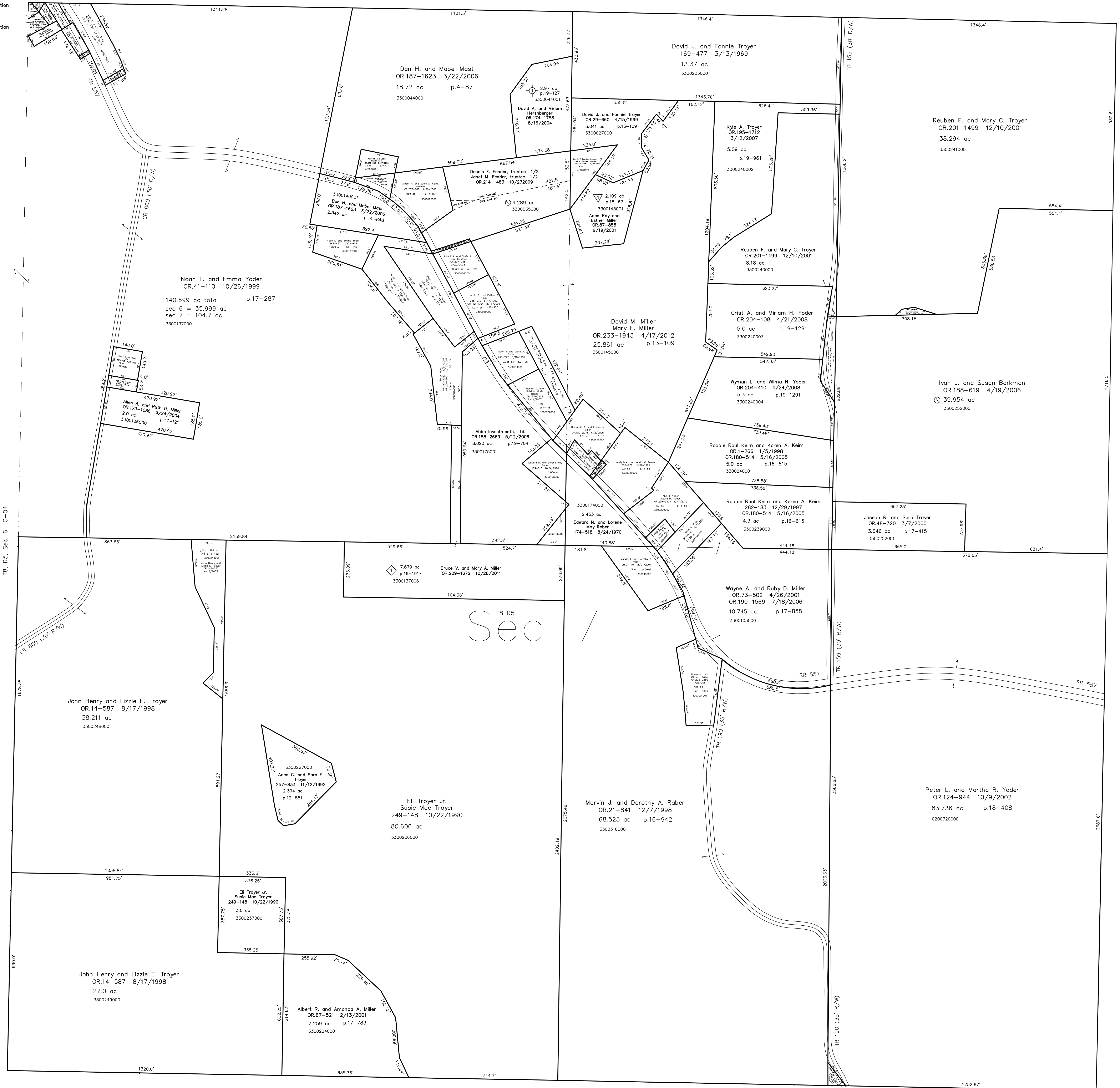


- 3300041001 East Holmes Local Board of Education
OR.39-981 10/5/1999
0.035 ac p.17-259
- 3300139001 East Holmes Local Board of Education
OR.39-977 10/5/1999
0.058 ac p.17-259
- 3300137004 Noah L. and Emma Yoder
OR.229-1875 10/28/2011
0.024 ac p.17-259

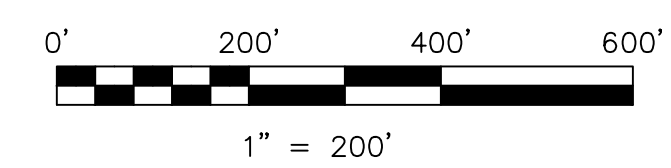


T8, R5, Sec. 6 C-04

T8, R5, Sec. 8 C-14

T8 R5 Sec 7

- ☆ Chorm View Subdivision
Plot 18-462 Platted 12/9/2002
- ◇ HT Subdivision
Plot 19-1917 Platted 10/4/2011
- Pine Tree Grove Subdivision
Plot 19-127 Platted 7/16/2004
- ▽ Sunny Slope Subdivision
Plot 18-67 Platted 8/31/2001



LET IT BE KNOWN, THIS MAP HAS BEEN PREPARED AS A REFERENCE GUIDE TO PROPERTY OWNERSHIP. WE BELIEVE THIS INFORMATION TO BE CORRECT AND CURRENT, HOWEVER IT IS NOT INTENDED FOR ANY LEGAL USE, WHETHER IT BE IN SALES, TRANSFERS, TRADES, LEASES OF ANY TYPE, ETC., AND DO NOT ACCEPT RESPONSIBILITY FOR ERRORS OF ANY NATURE OR OMISSIONS CONTAINED HEREIN.

new survey required for next transfer

Last Revision: 12/7/2012

T-8, R-5, Sec.7
Clark Twp.
Holmes County, Ohio

C-09

