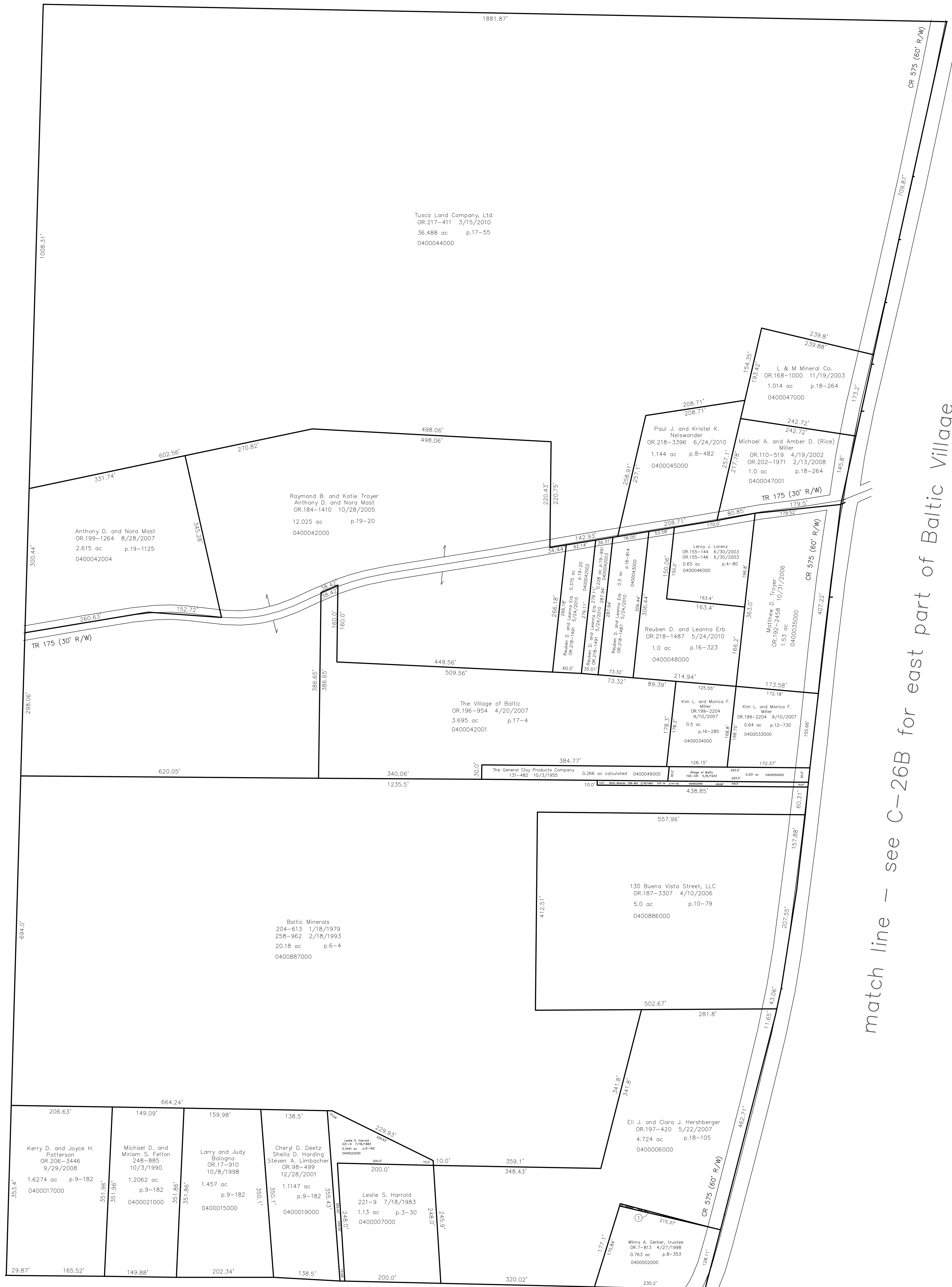


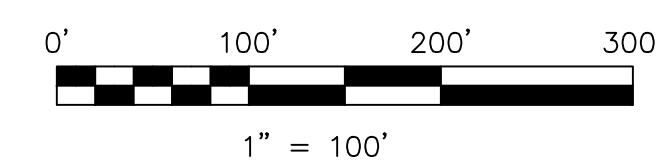
0400006001 Wilma A. Gerber, trustee
 OR 185-1188 12/9/2005
 0.011 ac p.19-565



match line - see C-26B for east part of Baltic Village

Last Revision: 6/24/2010

Baltic Village
incorporated
west part
T-8, R-4, Sec.25
Clark Twp.
Holmes County, Ohio



LET IT BE KNOWN, THIS MAP HAS BEEN PREPARED AS A REFERENCE GUIDE TO PROPERTY OWNERSHIP. WE BELIEVE THIS INFORMATION TO BE CORRECT AND CURRENT, HOWEVER IT IS NOT INTENDED FOR ANY LEGAL USE, WHETHER IT BE IN SALES, TRANSFERS, TRADES, LEASES OF ANY TYPE, ETC., AND DO NOT ACCEPT RESPONSIBILITY FOR ERRORS OF ANY NATURE OR OMISSIONS CONTAINED HEREIN.

new survey required for next transfer

C-26A

