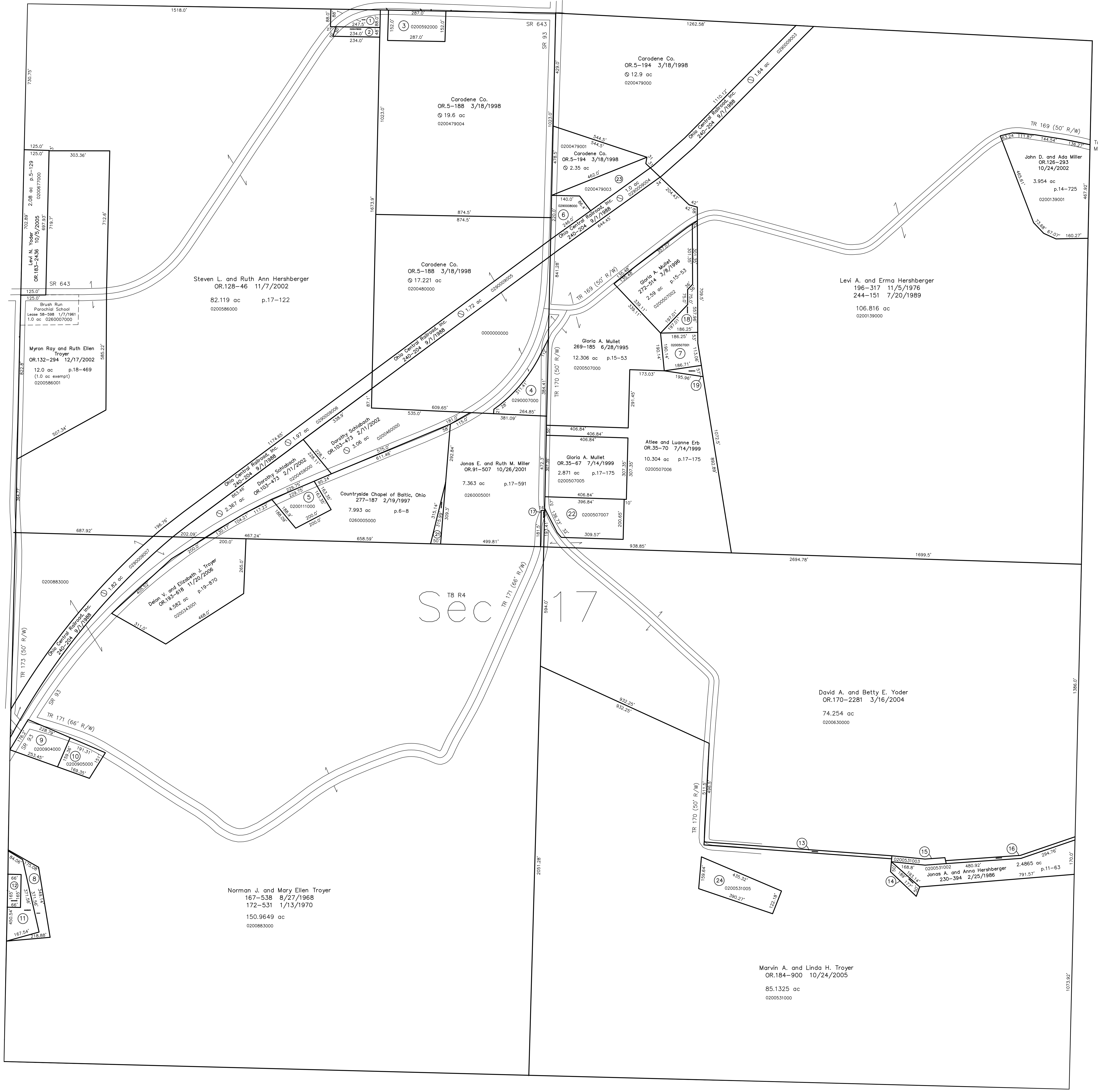
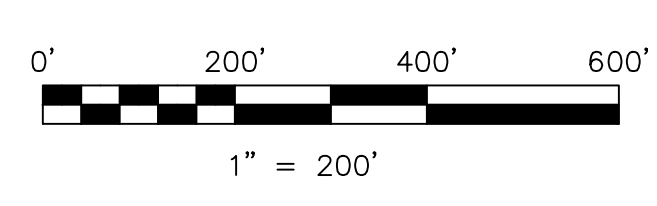


- 0200479002 ① Carodene Co.
OR.5-188 3/18/1998
0.5 ac
- 0200478000 ② Carodene Co.
OR.5-188 3/18/1998
0.25 ac
- 0200592000 ③ Robert H. and/or Lovina T. Brandt, trustees
OR.45-55 1/6/2000
1.0 ac p.4-157
- 0280007000 ④ The East Ohio Gas Company
158-133 3/25/1966
1.029 ac p.4-85
- 0200111000 ⑤ John Allen and Marvin Ray Hershberger
OR.146-269 4/22/2003
0.855 ac
- 0290008000 ⑥ Holmes-Wayne Electric Cooperative, Inc.
156-385 9/14/1965
0.6 ac p.4-71
- 0200507001 ⑦ Eva Keim, trustee
OR.46-661 2/3/2000
0.75 ac p.10-777
- 0200883001 ⑧ Abe H. and Ina Mast
OR.218-2686 1/27/2009
0.624 ac p.19-1455
- 0200904000 ⑨ Edward L. Gouse
184-892 9/4/1973
OR.147-39 4/28/2003
0.913 ac p.3-58
- 0200905000 ⑩ Myrom Down Gouse
222-11 11/1/1983
279-668 8/27/1997
0.637 ac p.10-204
- 0200882000 ⑪ Abe H. and Ina S. Mast
218-785 11/10/1982
279-882 9/11/1997
0.8401 ac p.10-69
- 0201016000 ⑫ school site?
ex. and DV.279-882
0.25 ac
- 0200630001 ⑬ Marvin A. and Linda H. Troyer
OR.184-900 10/24/2005
0.324 ac p.11-63
- 0200531004 ⑭ Jonas A. and Anna Hershberger
245-474 11/28/1989
OR.183-2436 10/6/2005
0.181 ac p.12-338
- 0200531003 ⑮ Jonas A. and Anna Hershberger
230-396 2/25/1986
0.185 ac p.11-63
- 0200531001 ⑯ David A. and Betty E. Yoder
OR.170-2281 3/16/2004
0.232 ac p.11-63
- 0201017000 ⑰ Abraham C. Troyer?
DV.95-215
0.068 ac
- 0200507003 ⑱ Eva Keim, trustee
OR.46-661 2/3/2000
0.665 ac p.15-53
- 0200507004 ⑲ Eva Keim, trustee
OR.46-661 2/3/2000
0.124 ac p.15-53
- 0000000000 ⑳ not used
- 0200459001 ㉑ Countryside Chapel of Battic, Ohio, Inc.
OR.52-70 7/11/2000
0.177 ac p.17-555
- 0200507007 ㉒ Altee and Luonne Erb
OR.178-863 2/14/2005
1.696 ac p.17-248
- 0200479003 ㉓ Carodene Co.
OR.5-188 3/18/1998
unknown ac
- 0200531005 ㉔ Nettie A. Troyer
OR.43-557 12/10/1999
1.305 ac p.17-326

T8, R5, Sec. 16 C-27



Tuscarawas County, Auburn Township T8, R4, Sec. 18



LET IT BE KNOWN, THIS MAP HAS BEEN PREPARED AS A REFERENCE GUIDE TO PROPERTY OWNERSHIP. WE BELIEVE THIS INFORMATION TO BE CORRECT AND CURRENT, HOWEVER IT IS NOT INTENDED FOR ANY LEGAL USE, WHETHER IT BE IN SALES, TRANSFERS, TRADES, LEASES OF ANY TYPE, ETC., AND DO NOT ACCEPT RESPONSIBILITY FOR ERRORS OF ANY NATURE OR OMISSIONS CONTAINED HEREIN.

new survey required for next transfer

Last Revision: 1/27/2009

T-8, R-4, Sec.17
Clark Twp.
Holmes County, Ohio

C-32

