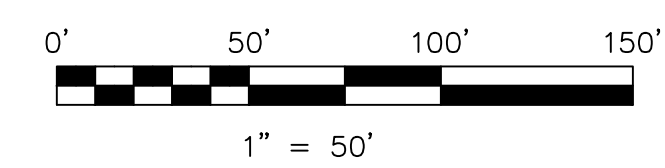
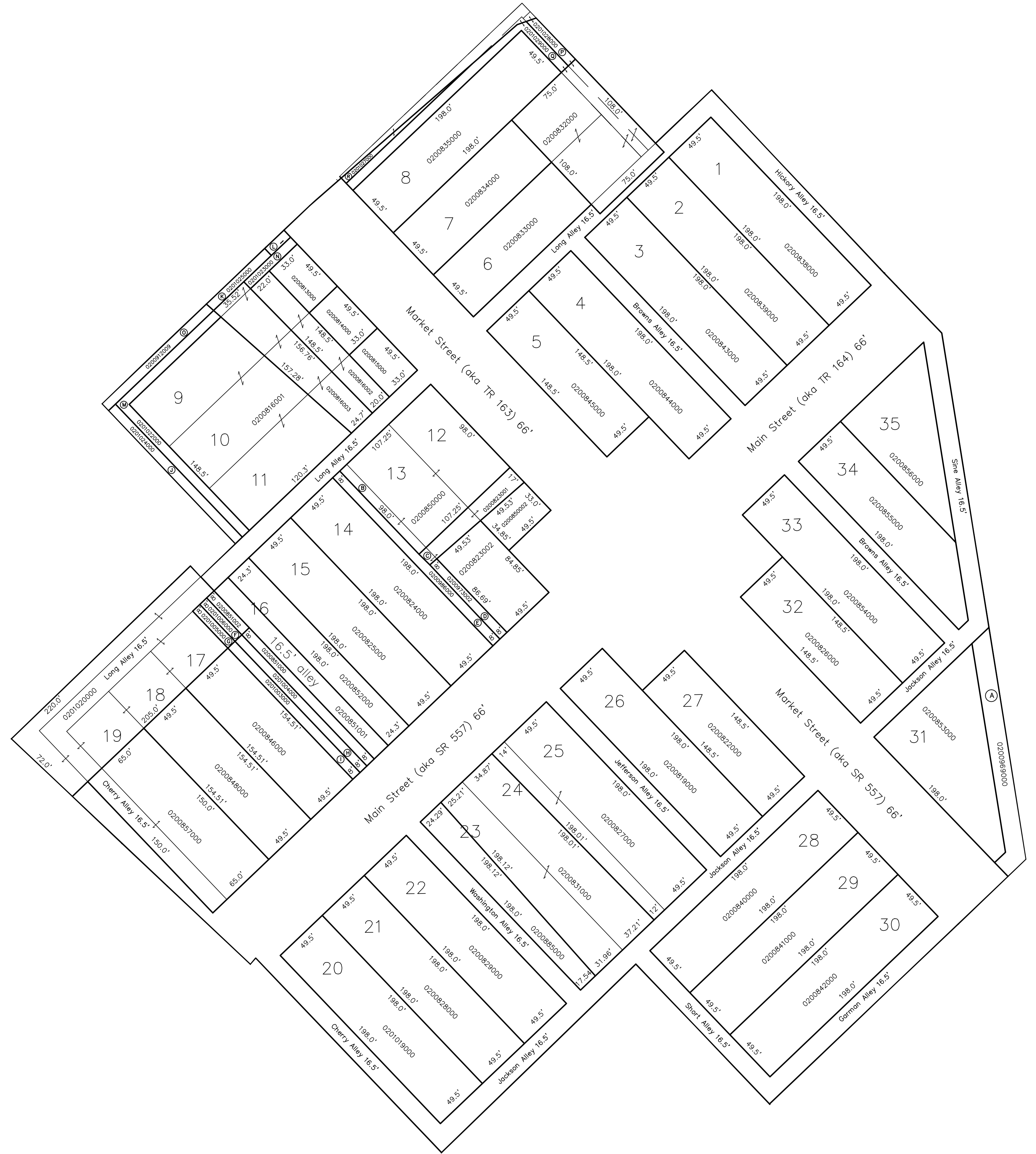


Lot 1	0200838000	Alvin H. and Lucinda Schlabach 201-404 4/4/1978 230-907 4/18/1986	Lot 28	0200840000	Eli E. and Katie Yoder OR.51-409 5/2/2000
Lot 2	0200839000	Alvin H. and Lucinda Schlabach 201-404 4/4/1978 230-907 4/18/1986	Lot 29	0200841000	Eli E. and Katie Yoder OR.51-409 5/2/2000
Lot 3	0200843000	Alvin H. and Lucinda Schlabach 230-905 4/18/1986 230-907 4/18/1986	Lot 30	0200842000	Eli E. and Katie Yoder OR.51-409 5/2/2000
Lot 4	0200844000	Alvin H. and Lucinda Schlabach 230-905 4/18/1986 230-907 4/18/1986	Lot 31	0200853000	Farmerstown Livestock Auction, LLC OR.198-351 7/2/2007
Lot 5	0200845000	Alvin H. and Lucinda Schlabach 230-905 4/18/1986 230-907 4/18/1986	Lot 32	0200826000	Robert W. Andrews 233-874 12/30/1986
Lot 6 w pt	0200833000	Abe J. and Sarah Raber 201-435 4/6/1978 Robert A. Raber OR.202-1720 2/8/2008	Lot 33	0200854000	Robert W. Andrews 233-874 12/30/1986
Lot 6 e pt	0200832000	Abe J. and Sarah Raber 201-435 4/6/1978 Robert A. Raber OR.202-1720 2/8/2008	Lot 34	0200855000	Robert W. Andrews 233-874 12/30/1986
Lot 7 w pt	0200834000	Abe J. and Sarah Raber 201-435 4/6/1978 Robert A. Raber OR.202-1720 2/8/2008	Lot 35	0200856000	Robert W. Andrews 233-874 12/30/1986
Lot 7 e pt	0200832000	Abe J. and Sarah Raber 201-435 4/6/1978 Robert A. Raber OR.202-1720 2/8/2008			
Lot 8	0200835000	Abe J. and Sarah Raber 247-831 7/10/1990 Robert A. Raber OR.202-1720 2/8/2008			
Lot 9 w pt	0200816001	Andrew E. and Saloma E. Barkman OR.206-2188 9/8/2008 0.125 ac p.19-1177			
Lot 9 md pt	0200816002	Emanuel J. and Iva Mae Raber OR.200-2942 11/7/2007 0.025 ac p.19-1177			
Lot 9 e pt	0200813000	Emanuel J. and Iva Mae Raber 252-641 9/5/1991			
Lot 10 w pt	0200816001	Andrew E. and Saloma E. Barkman OR.206-2188 9/8/2008 0.13 ac p.19-1177			
Lot 10 md pt	0200816002	Emanuel J. and Iva Mae Raber OR.200-2942 11/7/2007 0.024 ac p.19-1177			
Lot 10 e pt	0200814000	Emanuel J. and Iva Mae Raber 252-641 9/5/1991			
Lot 11 w pt	0200816001	Andrew E. and Saloma E. Barkman OR.206-2188 9/8/2008 0.134 ac p.19-1177			
Lot 11 md pt	0200816002	Emanuel J. and Iva Mae Raber OR.200-2942 11/7/2007 0.023 ac p.19-1177			
Lot 11 e pt	0200815000	Emanuel J. and Iva Mae Raber 252-641 9/5/1991			
Lot 12 n pt	0200850000	Raymond and Lucille Gingerich OR.110-724 4/23/2002 0.111 ac p.13-3			
Lot 12 md pt	0200823001	Raymond and Lucille Gingerich OR.110-724 4/23/2002 0.018 ac p.13-3			
Lot 12 s pt	0200850002	Marvin R. and Edna Yoder, co-trustees OR.194-2676 1/25/2007 0.039 ac p.12-729			
Lot 13 n pt	0200850000	Raymond and Lucille Gingerich OR.110-724 4/23/2002 0.111 ac p.13-3			
Lot 13 md pt	0200823001	Raymond and Lucille Gingerich OR.110-724 4/23/2002 0.016 ac p.13-3			
Lot 13 s pt	0200823002	Marvin R. and Edna Yoder, co-trustees OR.194-1676 1/25/2007 0.098 ac p.12-729			
Lot 14	0200824000	Roman A. and Edna Mae Stutzman 253-379 11/8/1991			
Lot 15	0200825000	Roman A. and Edna Mae Stutzman 253-379 11/8/1991			
Lot 16 nw pt	0200851002	Trustees of Clark Township 264-479 5/17/1994 0.009 ac p.14-512			
Lot 16 sw pt	0200851000	Dwight and Sherry Hershberger OR.55-123 7/12/2000 0.031 ac p.14-512			
Lot 16 md pt	0200851001	dedicated and accepted to Holmes County for road purposes 6/29/1994 p.14-545 0.075 ac p.14-512			
Lot 16 e pt	0200852000	Roman A. and Edna Mae Stutzman 253-379 11/8/1991 0.11 ac p.12-513			
Lot 17 n pt	0201020000	Board of Township Trustees of Clark Township 134-120 3/25/1957			
Lot 17 s pt	0200846000	Dwight and Sherry Hershberger OR.55-123 7/12/2000 0.176 ac p.14-512			
Lot 18 n pt	0201020000	Board of Township Trustees of Clark Township 134-120 3/25/1957			
Lot 18 s pt	0200848000	Dwight and Sherry Hershberger OR.55-123 7/12/2000 0.176 ac p.14-512			
Lot 19 n pt	0201020000	Board of Township Trustees of Clark Township 134-120 3/25/1957			
Lot 19 s pt	0200857000	Gerber & Sons, Inc. 221-159 8/5/1983			
Lot 20	0201019000	Myron J. and Marie A. Miller OR.208-864 12/17/2008			
Lot 21	0200828000	Myron J. and Marie A. Miller OR.175-3324 10/28/2004			
Lot 22	0200829000	Myron J. and Marie A. Miller OR.175-3324 10/28/2004			
Lot 23 w pt	0200850000	Myron J. and Marie A. Miller OR.175-3324 10/28/2004 0.095 ac p.19-224			
Lot 23 e pt	0200831000	Roman D. and Susie R. Miller, co-trustees OR.200-1352 10/19/2007 0.129 ac p.9-44			
Lot 24 w pt	0200831000	Roman D. and Susie R. Miller, co-trustees OR.200-1352 10/19/2007 0.163 ac p.9-44			
Lot 24 e pt	0200827000	Amanda D. Troyer 221-310 8/19/1983 0.061 ac p.9-44			
Lot 25	0200827000	Amanda D. Troyer 221-310 8/19/1983 0.225 ac p.9-44			
Lot 26	0200819000	Roy E. and Mary A. Barkman OR.206-2186 9/8/2008			
Lot 27	0200822000	Roy E. and Mary A. Barkman 199-526 9/9/1977 OR.17-597 10/2/1998			

**Circled parcels**

- (A) 0200969000 Farmerstown Livestock Auction, LLC  
OR.198-351 7/2/2007  
0.078 ac p.11-68
- (B) 0200850000 Raymond and Lucille Gingerich  
OR.110-724 4/23/2002  
0.019 ac p.13-3
- (C) 0200823001 Raymond and Lucille Gingerich  
OR.110-724 4/23/2002  
0.003 ac p.13-3
- (D) 0200973002 Marcus R. and Edna Yoder, co-trustees  
OR.194-1676 1/25/2007  
0.016 ac p.12-729
- (E) 0200986000 Roman A. and Edna Mae Stutzman  
253-379 11/8/1991  
0.038 ac p.12-513
- (F) 0201006000 Trustees of Clark Township  
resolution to vacate alley 264-728 6/7/1994  
0.008 ac p.14-525
- (G) 0201005000 Board of Township Trustees of Clark Township  
resolution to vacate alley 264-728 6/7/1994  
0.008 ac p.14-525
- (H) 0201004000 Dwight and Sherry Hershberger  
OR.55-123 7/12/2000  
0.029 ac p.14-525
- (I) 0201003000 Dwight and Sherry Hershberger  
OR.55-123 7/12/2000  
0.029 ac p.14-525
- (J) 0201024000 Andrew E. and Saloma E. Barkman  
OR.206-2188 9/8/2008  
0.03 ac p.19-1287
- (K) 0201025000 Emanuel J. and Iva Mae Raber  
OR.203-3042 4/11/2008  
0.036 ac p.19-1287
- (L) 0201026000 Emanuel J. and Iva Mae Raber  
OR.203-3042 4/11/2008  
0.004 ac p.19-1287
- (M) 0201022000 Andrew E. and Saloma E. Barkman  
OR.206-2188 9/8/2008  
0.051 ac p.19-1287
- (N) 0201023000 Emanuel J. and Iva Mae Raber  
OR.203-3042 4/11/2008  
0.01 ac p.19-1287
- (O) 0200912009 Andrew E. and Saloma E. Barkman  
OR.206-2188 9/8/2008  
0.023 ac p.19-1348
- (P) 0201028000 Farmerstown Cemetery  
OR.212-2762 8/14/2009  
0.029 ac p.19-1567
- (Q) 0201029000 Abe J. and Sarah Raber; Robert A. Raber  
OR.212-2762 8/14/2009  
0.067 ac p.19-1567
- (R) 0201027000 Eli J. and Katie Yoder  
OR.212-2762 8/14/2009  
0.041 ac p.19-1567



LET IT BE KNOWN THIS MAP HAS BEEN PREPARED AS A REFERENCE GUIDE TO PROPERTY OWNERSHIP. WE BELIEVE THIS INFORMATION TO BE CORRECT AND CURRENT. HOWEVER IT IS NOT INTENDED FOR ANY LEGAL USE, WHETHER IT BE IN SALES, TRANSFERS, TRADES, LEASES OF ANY TYPE, ETC., AND DO NOT ACCEPT RESPONSIBILITY FOR ERRORS OF ANY NATURE OR OMISSIONS CONTAINED HEREIN.

new survey required for next transfer

Last Revision: 8/14/2009

**Farmerstown Village  
\*unincorporated\*  
T-8, R-5, Sec.12  
Clark Twp.  
Holmes County, Ohio**

**C-18A**

