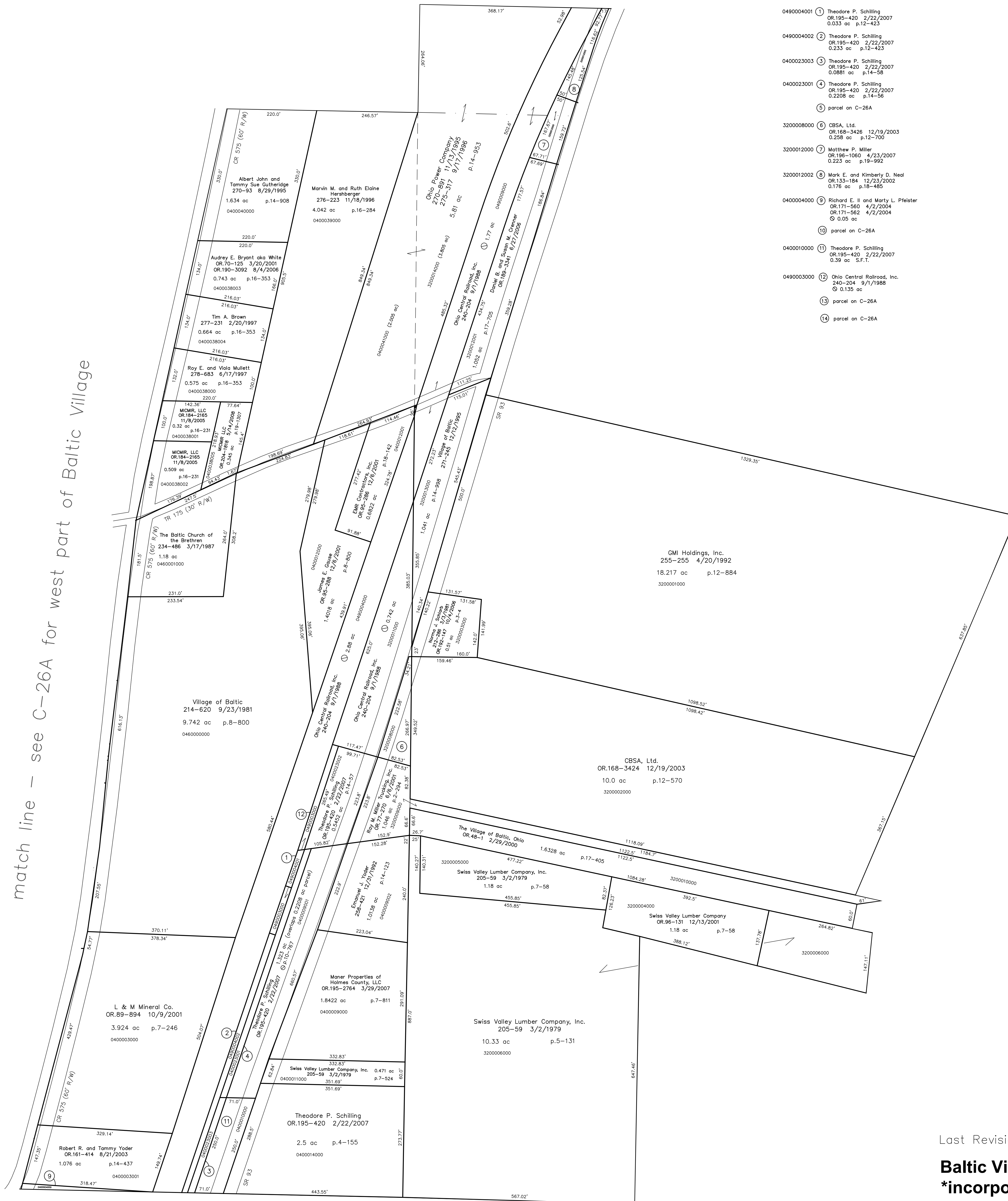


match line — see C-26A for west part of Baltic Village



- 0490004001 ① Theodore P. Schilling
OR.195-420 2/22/2007
0.033 ac p.12-423
- 0490004002 ② Theodore P. Schilling
OR.195-420 2/22/2007
0.233 ac p.12-423
- 0400023003 ③ Theodore P. Schilling
OR.195-420 2/22/2007
0.0881 ac p.14-58
- 0400023001 ④ Theodore P. Schilling
OR.195-420 2/22/2007
0.2208 ac p.14-58
- ⑤ parcel on C-26A
- 3200008000 ⑥ CBSA, Ltd.
OR.168-3426 12/19/2003
0.258 ac p.12-700
- 3200012000 ⑦ Matthew P. Miller
OR.196-1060 4/23/2007
0.223 ac p.19-992
- 3200012002 ⑧ Mark E. and Kimberly D. Neal
OR.133-184 12/23/2002
0.176 ac p.18-485
- 0400004000 ⑨ Richard E. II and Marty L. Pfeister
OR.171-560 4/2/2004
OR.171-562 4/2/2004
0.05 ac
- ⑩ parcel on C-26A
- 0400010000 ⑪ Theodore P. Schilling
OR.195-420 2/22/2007
0.39 ac S.F.T.
- 0490003000 ⑫ Ohio Central Railroad, Inc.
OR.204-204 9/1/1988
0.135 ac
- ⑬ parcel on C-26A
- ⑭ parcel on C-26A

GMI Holdings, Inc.
255-255 4/20/1992
18.217 ac p.12-884
3200001000

CBSA, Ltd.
OR.168-3424 12/19/2003
10.0 ac p.12-570
3200002000

L. & M Mineral Co.
OR.89-894 10/9/2001
3.924 ac p.7-246
0400003000

Robert R. and Tammy Yoder
OR.161-414 8/21/2003
1.076 ac p.14-437
0400003001

Theodore P. Schilling
OR.195-420 2/22/2007
2.5 ac p.4-155
0400014000

Maner Properties of
Holmes County, LLC
OR.195-2764 3/29/2007
1.8422 ac p.7-811
0400009000

Village of Baltic
OR.214-620 9/23/1981
9.742 ac p.8-800
0460000000

The Baltic Church of
the Brethren
OR.234-486 3/17/1987
1.18 ac
0460001000

MCMR, LLC
OR.184-2165 11/8/2005
0.509 ac p.16-231
0400038002

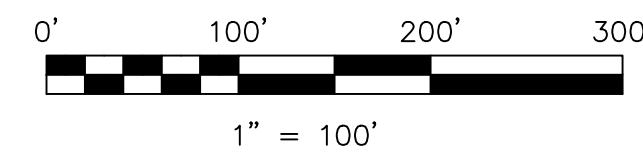
MCMR, LLC
OR.184-2165 11/8/2005
0.32 ac p.16-231
0400038001

Roy E. and Vela Mullett
OR.278-683 6/17/1997
0.575 ac p.16-353
0400038000

Tim A. Brown
OR.277-231 2/20/1997
0.664 ac p.16-353
0400038004

Audrey E. Bryant aka White
OR.70-125 3/20/2001
OR.190-3092 8/4/2006
0.743 ac p.16-353
0400038003

Albert John and
Tammy Sue Gutheridge
OR.270-93 8/29/1995
1.634 ac p.14-908
0400040000



LET IT BE KNOWN, THIS MAP HAS BEEN PREPARED AS A REFERENCE GUIDE TO PROPERTY OWNERSHIP. WE BELIEVE THIS INFORMATION TO BE CORRECT AND CURRENT, HOWEVER IT IS NOT INTENDED FOR ANY LEGAL USE, WHETHER IT BE IN SALES, TRANSFERS, TRUSTS, LEASES OF ANY TYPE, ETC., AND DO NOT ACCEPT RESPONSIBILITY FOR ERRORS OF ANY NATURE OR OMISSIONS CONTAINED HEREIN.

new survey required for next transfer

Last Revision: 5/14/2008

**Baltic Village
incorporated
east part
T-8, R-4, Sec.25
Clark Twp.
Holmes County, Ohio**

C-26B

