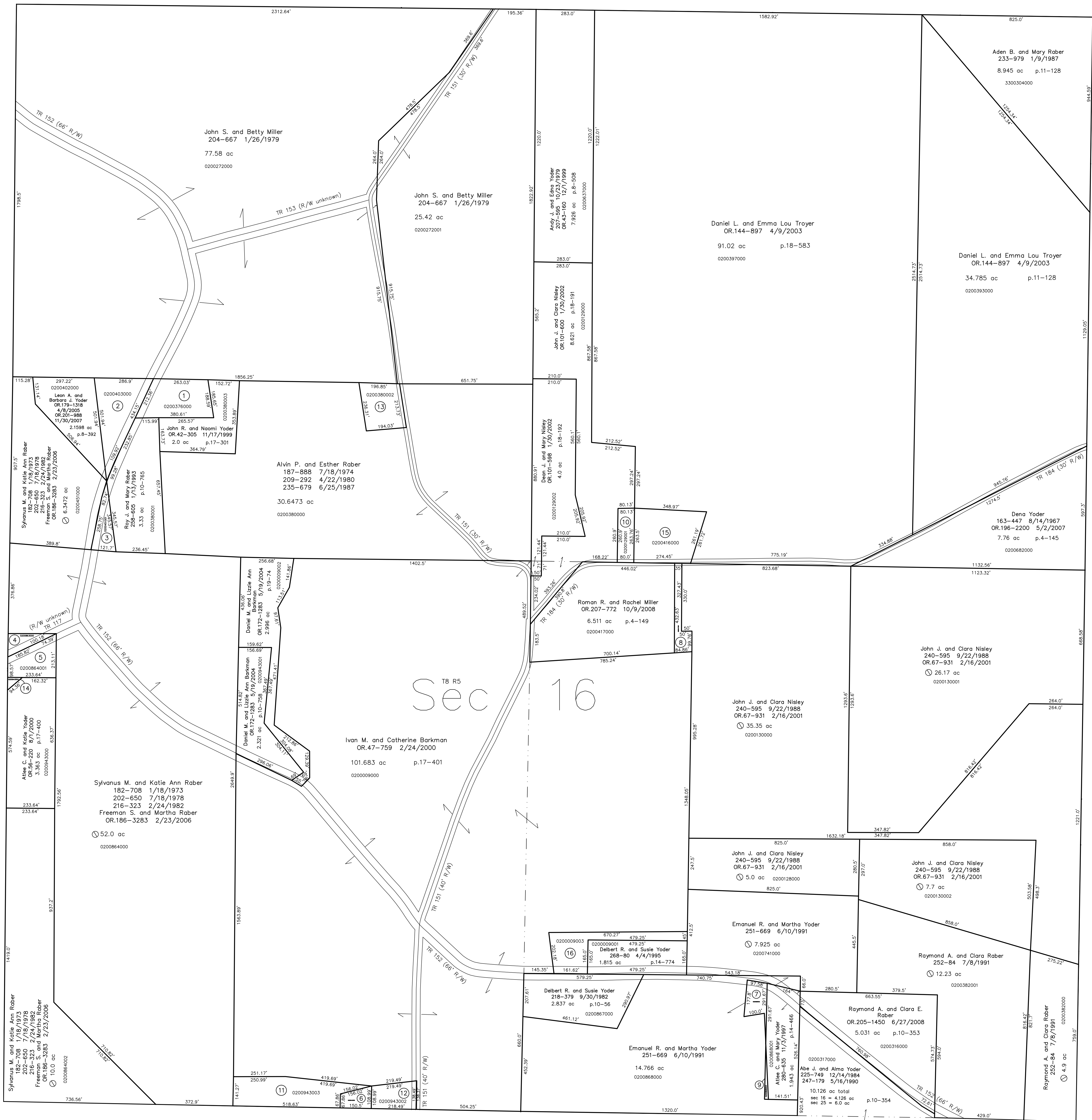
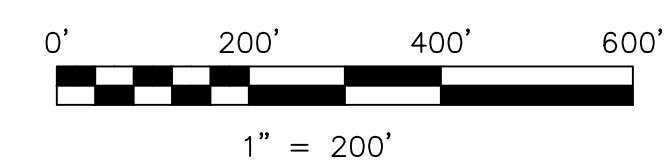


Mechanic Township T8, R6, Sec. 20 MC-34



T8, R5, Sec. 17 C-07

- 0200376000 ① John R. and Naomi Yoder
281-898 10/13/1993
1.4003 ac p.7-810
- 0200403000 ② Leon A. and Barbara J. Yoder
OR.179-1318 4/8/2005
OR.201-988 11/30/2007
1.6224 ac p.8-393
- 0200451001 ③ Roy J. and Mary Rober
258-805 1/13/1993
0.493 ac p.10-765
- 0200863000 ④ Altee C. and Katie Yoder
216-335 3/18/1982
0.332 ac p.8-872
- 0200864001 ⑤ Altee C. and Katie Yoder
OR.48-466 3/9/2000
0.834 ac p.17-421
- 0200942000 ⑥ Mose J. and Lydia Ann Miller
OR.96-640 12/19/2000
0.305 ac p.10-411
- 0200868002 ⑦ Altee R. and Mary Yoder
OR.168-3316 12/17/2003
0.305 ac p.18-549
- 0200417001 ⑧ John J. and Clara Nisley
240-600 9/22/1988
OR.72-47 4/11/2001
0.458 ac p.12-75
- 0200868003 ⑨ Emanuel R. and Martha Yoder
OR.168-3314 12/17/2003
0.059 ac p.18-849
- 0200129001 ⑩ Roman R. and Rachel Miller
OR.207-772 10/9/2008
1.8398 ac p.4-56
- 0200943003 ⑪ Mose J. and Lydia Ann Miller
OR.96-640 12/19/2000
1.752 ac p.14-453
- 0200943002 ⑫ Mose J. and Lydia Ann Miller
OR.96-640 12/19/2000
0.619 ac p.14-453
- 0200380002 ⑬ Owen R. and Edna Yoder
279-391 8/7/1997
1.0 ac p.16-504
- 0200943004 ⑭ Altee C. and Katie Yoder
OR.96-640 12/19/2000
0.051 ac p.17-400
- 0200416000 ⑮ Roman R. and Rachel Miller
OR.207-772 10/9/2008
1.8398 ac p.4-56
- 0200009003 ⑯ Delbert R. and Susie S. Yoder
OR.203-2412 4/1/2008
1.274 ac p.19-1278



LET IT BE KNOWN THIS MAP HAS BEEN PREPARED AS A REFERENCE GUIDE TO PROPERTY OWNERSHIP. WE BELIEVE THIS INFORMATION TO BE CORRECT AND CURRENT, HOWEVER IT IS NOT INTENDED FOR ANY LEGAL USE, WHETHER IT BE IN SALES, TRANSFERS, TRADES, LEASES OF ANY TYPE, ETC., AND DO NOT ACCEPT RESPONSIBILITY FOR ERRORS OF ANY NATURE OR OMISSIONS CONTAINED HEREIN.

new survey required for next transfer

Last Revision: 10/9/2008

T-8, R-5, Sec.16
Clark Twp.
Holmes County, Ohio

C-02

