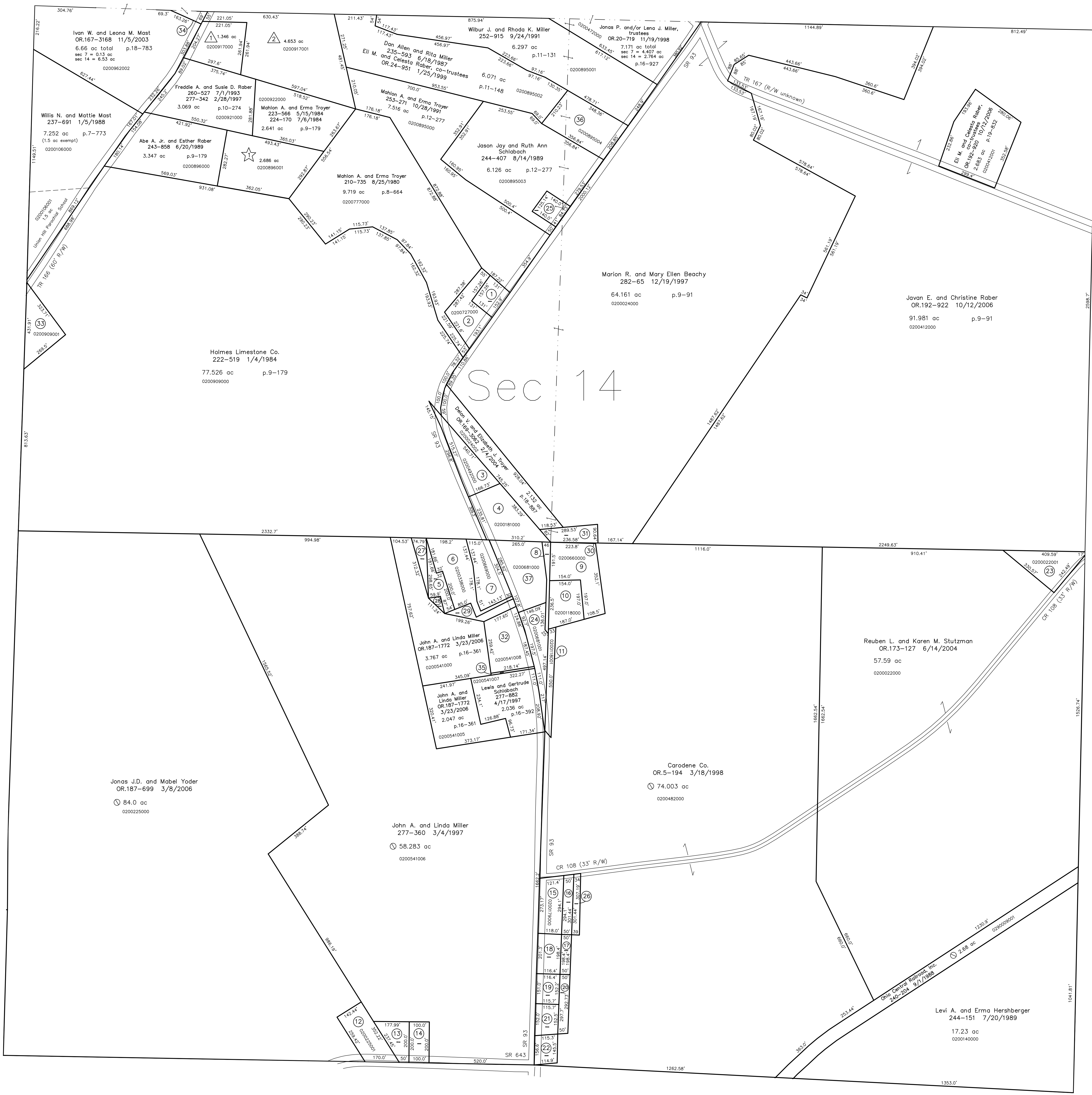
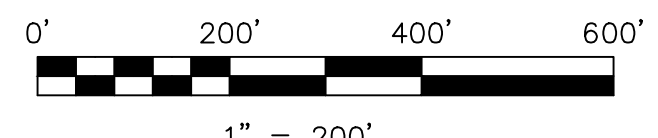


- 0200613000 ① Willis M. and Miriam A. Troyer  
OR.116-987 7/3/2002  
0.47 ac p.5-62
- 0200727000 ② Clara Miller, trustee  
OR.191-2389 9/15/2006  
0.978 ac p.18-608
- 0200492000 ③ Delon V. and Elizabeth J. Troyer  
OR.23-294 12/29/1998  
0.98 ac p.5-117
- 0200181000 ④ Delon V. and Elizabeth J. Troyer  
266-595 11/4/1994  
1.42 ac
- 0200541001 ⑤ Wayne M. and Wilma D. Miller  
260-106 6/1/1993  
0.442 ac p.14-216
- 0200338000 ⑥ Wayne M. Miller  
247-769 7/2/1990  
1.58 ac p.6-7
- 0200669000 ⑦ Levern J. and Debbie S. Yoder  
220-816 6/10/1983  
1.08 ac p.5-12
- 0200590000 ⑧ Daniel C. Yoder, trustee  
OR.169-2377 1/20/2004  
0.249 ac p.7-368
- 0200660000 ⑨ Daniel C. Yoder, trustee  
OR.169-2377 1/20/2004  
1.45 ac p.4-75
- 0200118000 ⑩ Donovan J. and Jody E. Hershberger  
202-234 6/8/1978  
0.837 ac
- 0200118001 ⑪ Donovan J. and Jody E. Hershberger  
202-234 6/8/1978  
0.4 ac
- 0200225001 ⑫ Jason and Janet Mast  
OR.94-374 11/27/2001  
1.0 ac p.14-295
- 0200771000 ⑬ Robert L. Miller  
222-115 1/16/1983  
OR.41-870 11/8/1999  
0.532 ac p.5-93
- 0200329000 ⑭ Robert L. Miller  
180-878 7/17/1972  
0.459 ac p.5-142
- 0200179000 ⑮ William R. and Eva Keim  
171-321 8/26/1969  
269-642 7/27/1995  
0.775 ac p.4-50
- 0200178000 ⑯ William R. and Eva Keim  
196-149 10/19/1976  
262-853 12/28/1993  
269-642 7/27/1995  
0.342 ac p.7-718
- 0200476000 ⑰ Lewis and Gertrude Schlabach  
205-100 3/7/1979  
0.228 ac p.1-577
- 0200475000 ⑱ Lewis and Gertrude Schlabach  
205-100 3/7/1979  
0.335 ac
- 0200773000 ⑲ Mattie Schlabach  
211-623 12/8/1980  
278-171 5/8/1997  
0.4 ac
- 0200470000 ⑳ Mattie Schlabach  
211-623 12/8/1980  
278-171 5/8/1997  
0.339 ac p.7-577
- 0200754000 ㉑ Gertrude Schlabach  
OR.21-402 11/30/1998  
0.4 ac
- 0200753000 ㉒ Gertrude Schlabach  
OR.21-402 11/30/1998  
0.4 ac
- 0200222001 ㉓ Wilma Beachy  
247-841 7/19/1990  
1.0 ac p.12-476
- 0200681001 ㉔ Donovan J. and Jody D. Hershberger  
280-99 9/25/1997  
0.922 ac p.14-720
- 0200895005 ㉕ Jason Jay and Ruth Ann Schlabach  
267-907 3/17/1995  
OR.178-1358 2/22/2005  
OR.178-201 3/19/2009  
0.402 ac p.14-764
- 0200482001 ㉖ William R. and Eva Keim  
271-700 1/19/1996  
0.425 ac p.16-4
- 0200541003 ㉗ Wayne M. and Wilma D. Miller  
277-357 3/4/1997  
0.256 ac p.16-361
- 0200541004 ㉘ Wayne M. and Wilma D. Miller  
277-357 3/4/1997  
0.06 ac p.16-361
- 0200541002 ㉙ Wayne M. and Wilma D. Miller  
277-357 3/4/1997  
0.325 ac p.16-361
- 0200482002 ㉚ Daniel C. Yoder, trustee  
OR.169-2377 1/20/2004  
0.008 ac p.16-866
- 0200024001 ㉛ Daniel C. Yoder, trustee  
OR.169-2377 1/20/2004  
0.469 ac p.16-859
- 0200541008 ㉜ Lewis and Gertrude Schlabach  
OR.175-3125 10/25/2004  
1.303 ac p.17-310
- 0200909001 ㉝ Edwin D. and Anna H. Troyer  
OR.93-711 11/20/2001  
1.0 ac p.18-127
- 0200106002 ㉞ Marilyn Kay Wengert  
OR.124-492 10/3/2002  
0.13 ac p.18-400
- 0200541009 ㉟ Lewis and Gertrude Schlabach  
OR.169-499 12/30/2003  
0.09 ac p.17-310
- 0200895004 ㊱ Dan Allen and Rita Miller  
251-334 5/14/1991  
1.682 ac p.12-656
- 0200681000 ㊲ Susan Yoder  
217-958 8/17/1982  
244-443 8/16/1989  
1.609 ac p.2-130

T8, R5, Sec. 15 C-28



- △ Union Valley Hilltop View Allotment No.1  
Plat 15-73 Platted 12/19/1995
- 0200917000 △ Jay E. and Wanda L. Miller  
272-566 3/14/1996  
1.346 ac p.15-73
- 0200917001 △ Benueil Roy and Julia Ann Statzhus  
271-340 12/18/1995  
4.653 ac p.15-73
- ☆ Mabee Subdivision  
Plat 19-266 Platted 12/7/2004
- 0200896001 ☆ Marvin A. and Regina A. Raber  
OR.179-3047 5/3/2005  
2.686 ac p.19-266



LET IT BE KNOWN, THIS MAP HAS BEEN PREPARED AS A REFERENCE GUIDE TO PROPERTY OWNERSHIP. WE BELIEVE THIS INFORMATION TO BE CORRECT AND CURRENT, HOWEVER IT IS NOT INTENDED FOR ANY LEGAL USE, WHETHER IT BE IN SALES, TRANSFERS, TRUSTS, LEASES OF ANY TYPE, ETC., AND DO NOT ACCEPT RESPONSIBILITY FOR ERRORS OF ANY NATURE OR OMISSIONS CONTAINED HEREIN.

⊙ new survey required for next transfer

Last Revision: 10/12/2006

**T-8, R-4, Sec.14**  
**Clark Twp.**  
**Holmes County, Ohio**

**C-33**

Tuscarawas County, Auburn Township T8, R4, Sec. 13