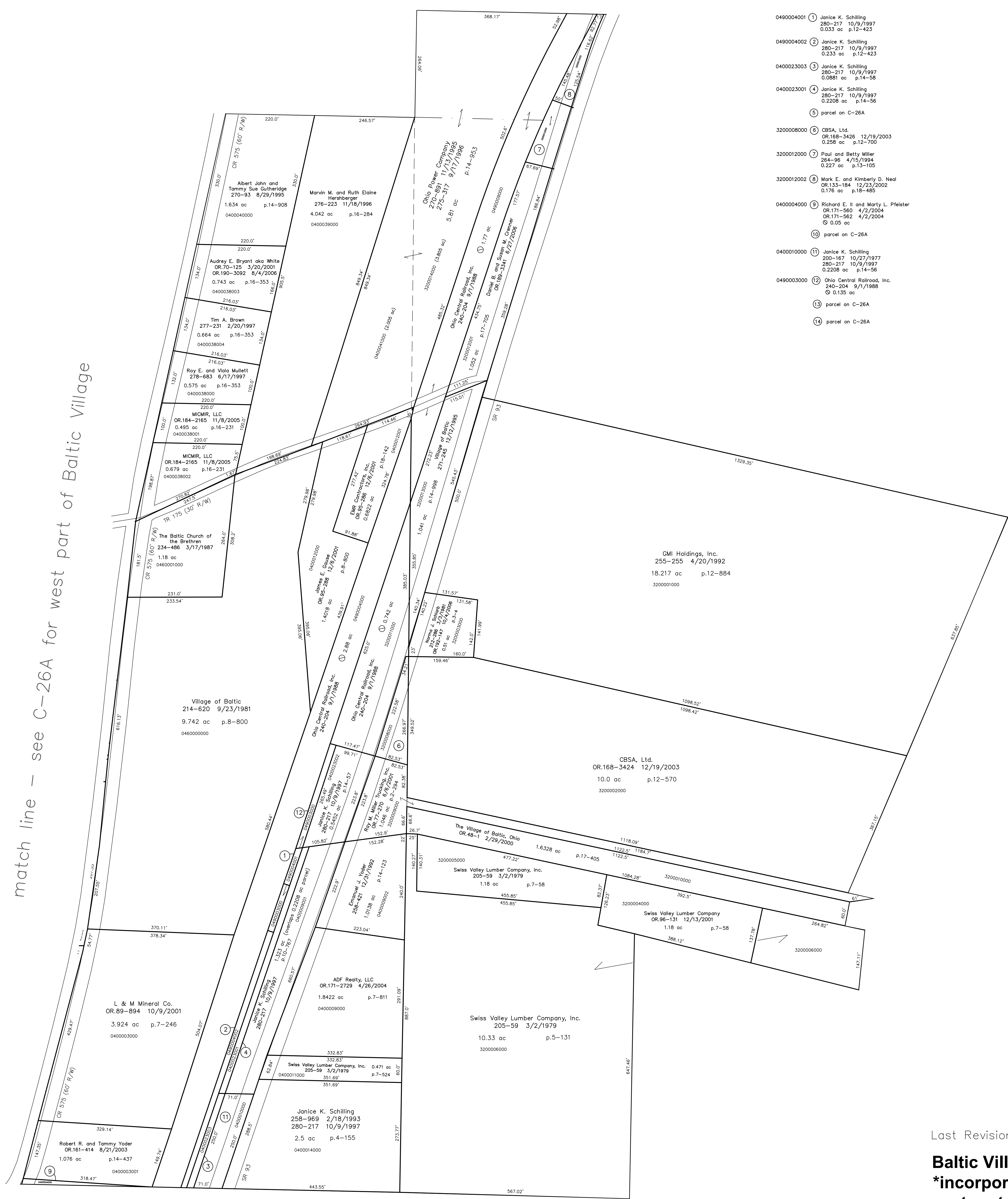
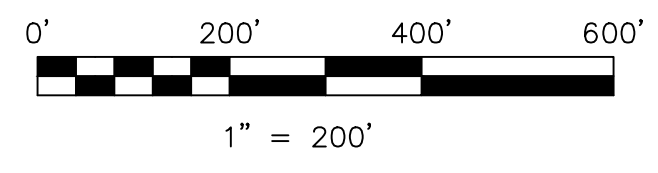


match line — see C-26A for west part of Baltic Village



- 0490004001 ① Janice K. Schilling
280-217 10/9/1997
0.033 ac p.12-423
- 0490004002 ② Janice K. Schilling
280-217 10/9/1997
0.233 ac p.12-423
- 0400023003 ③ Janice K. Schilling
280-217 10/9/1997
0.0881 ac p.14-58
- 0400023004 ④ Janice K. Schilling
280-217 10/9/1997
0.2208 ac p.14-56
- ⑤ parcel on C-26A
- 3200008000 ⑥ CBSA, Ltd.
OR.168-3426 12/19/2003
0.258 ac p.12-700
- 3200012000 ⑦ Paul and Betty Miller
264-96 4/15/1994
0.227 ac p.13-105
- 3200012002 ⑧ Mark E. and Kimberly D. Neal
OR.133-184 12/23/2002
0.176 ac p.18-465
- 0400004000 ⑨ Richard E. II and Marty L. Pfeister
OR.171-560 4/2/2004
OR.171-562 4/2/2004
0.05 ac
- ⑩ parcel on C-26A
- 0400010000 ⑪ Janice K. Schilling
200-167 10/27/1977
280-217 10/9/1997
0.2208 ac p.14-56
- 0490003000 ⑫ Ohio Central Railroad, Inc.
240-204 9/1/1988
0.135 ac
- ⑬ parcel on C-26A
- ⑭ parcel on C-26A



LET IT BE KNOWN, THIS MAP HAS BEEN PREPARED AS A REFERENCE GUIDE TO PROPERTY OWNERSHIP. WE BELIEVE THIS INFORMATION TO BE CORRECT AND CURRENT, HOWEVER IT IS NOT INTENDED FOR ANY LEGAL USE, WHETHER IT BE IN SALES, TRANSFERS, TRAILS, LEASES OF ANY TYPE, ETC., AND DO NOT ACCEPT RESPONSIBILITY FOR ERRORS OF ANY NATURE OR OMISSIONS CONTAINED HEREIN.

⊖ new survey required for next transfer

Last Revision: 10/4/2006

Baltic Village
incorporated
east part
T-8, R-4, Sec.25
Clark Twp.
Holmes County, Ohio

C-26B

