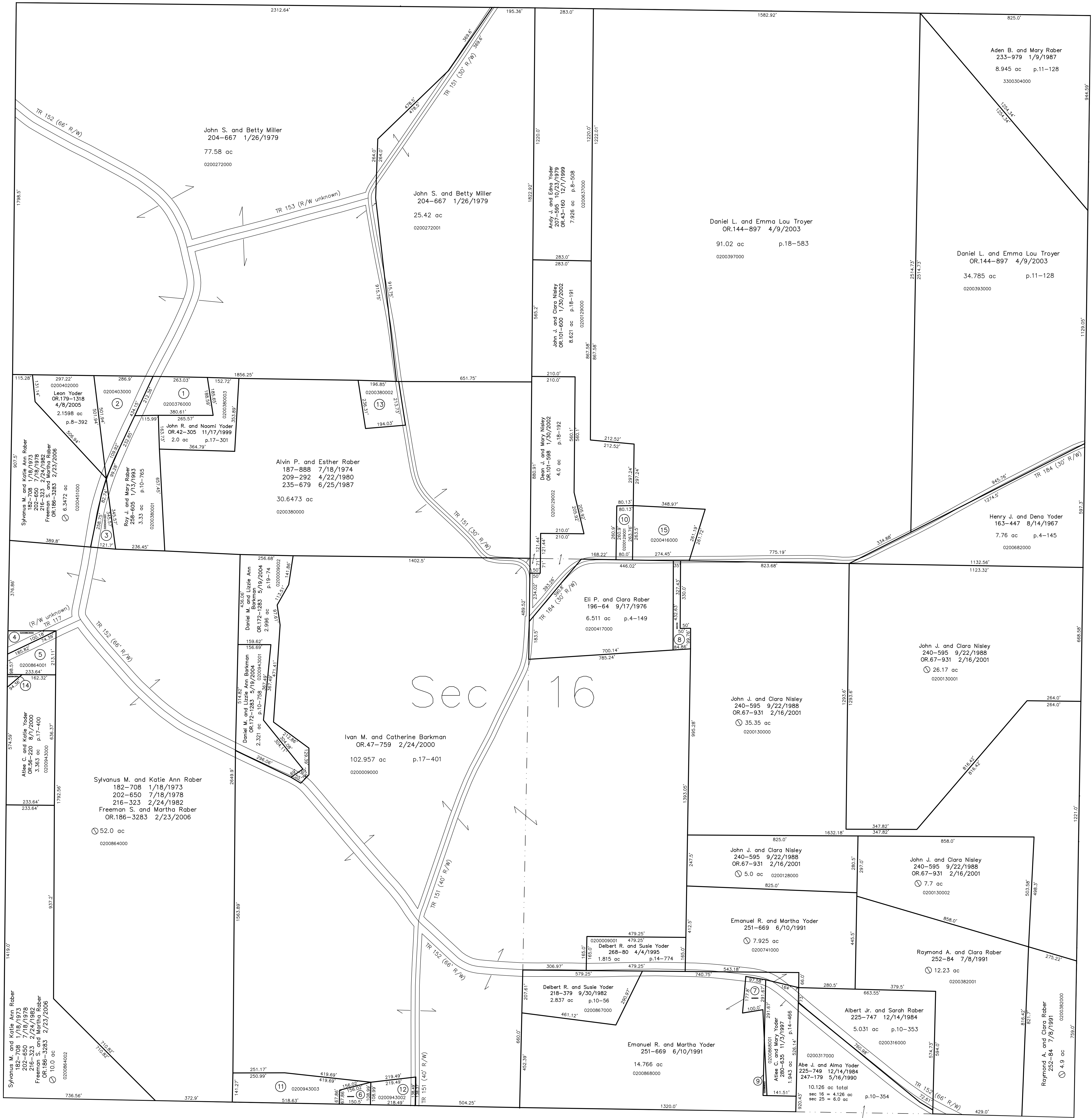
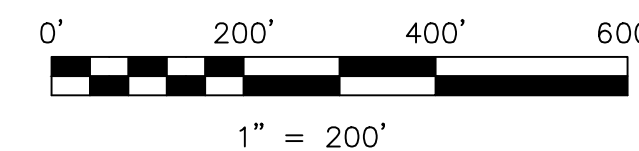


Mechanic Township T8, R6, Sec. 20 MC-34



T8, R5, Sec. 17 C-07

- 0200376000 ① John R. and Naomi Yoder
261-898 10/13/1993
1.4003 ac p.7-810
- 0200403000 ② Leon A. Yoder
OR.179-1318 4/8/2005
1.6224 ac p.8-393
- 0200451001 ③ Roy J. and Mary Raber
258-605 1/13/1993
0.493 ac p.10-765
- 0200863000 ④ Ailee C. and Katie Yoder
216-535 3/18/1982
0.332 ac p.8-872
- 0200864001 ⑤ Ailee C. and Katie Yoder
OR.48-486 3/9/2000
0.834 ac p.17-421
- 0200942000 ⑥ Mose J. and Lydia Ann Miller
OR.96-640 12/19/2001
0.305 ac p.10-411
- 0200868002 ⑦ Ailee R. and Mary Yoder
OR.188-3316 12/17/2003
0.395 ac p.18-849
- 0200417001 ⑧ John J. and Clara Nisley
240-600 9/22/1988
OR.72-47 4/11/2001
0.459 ac p.12-75
- 0200868003 ⑨ Emanuel R. and Martha Yoder
OR.168-3314 12/17/2003
0.059 ac p.18-849
- 0200129001 ⑩ Eli P. and Clara Raber
240-593 9/22/1988
0.482 ac p.12-75
- 0200943003 ⑪ Mose J. and Lydia Ann Miller
OR.96-640 12/19/2001
1.752 ac p.14-453
- 0200943002 ⑫ Mose J. and Lydia Ann Miller
OR.96-640 12/19/2001
0.619 ac p.14-453
- 0200380002 ⑬ Owen R. and Edna Yoder
279-391 8/7/1997
1.0 ac p.16-504
- 0200943004 ⑭ Ailee C. and Katie Yoder
OR.96-220 8/1/2000
0.051 ac p.17-400
- 0200416000 ⑮ Eli P. and Clara Raber
196-64 9/17/1976
1.8398 ac p.4-96



LET IT BE KNOWN, THIS MAP HAS BEEN PREPARED AS A REFERENCE GUIDE TO PROPERTY OWNERSHIP. WE BELIEVE THIS INFORMATION TO BE CORRECT AND CURRENT, HOWEVER IT IS NOT INTENDED FOR ANY LEGAL USE, WHETHER IT BE IN SALES, TRANSFERS, TRUSTS, LEASES OF ANY TYPE, ETC., AND DO NOT ACCEPT RESPONSIBILITY FOR ERRORS OF ANY NATURE OR OMISSIONS CONTAINED HEREIN.

⊕ new survey required for next transfer

Last Revision: 4/8/2005
T-8, R-5, Sec.16
Clark Twp.
Holmes County, Ohio

C-02

