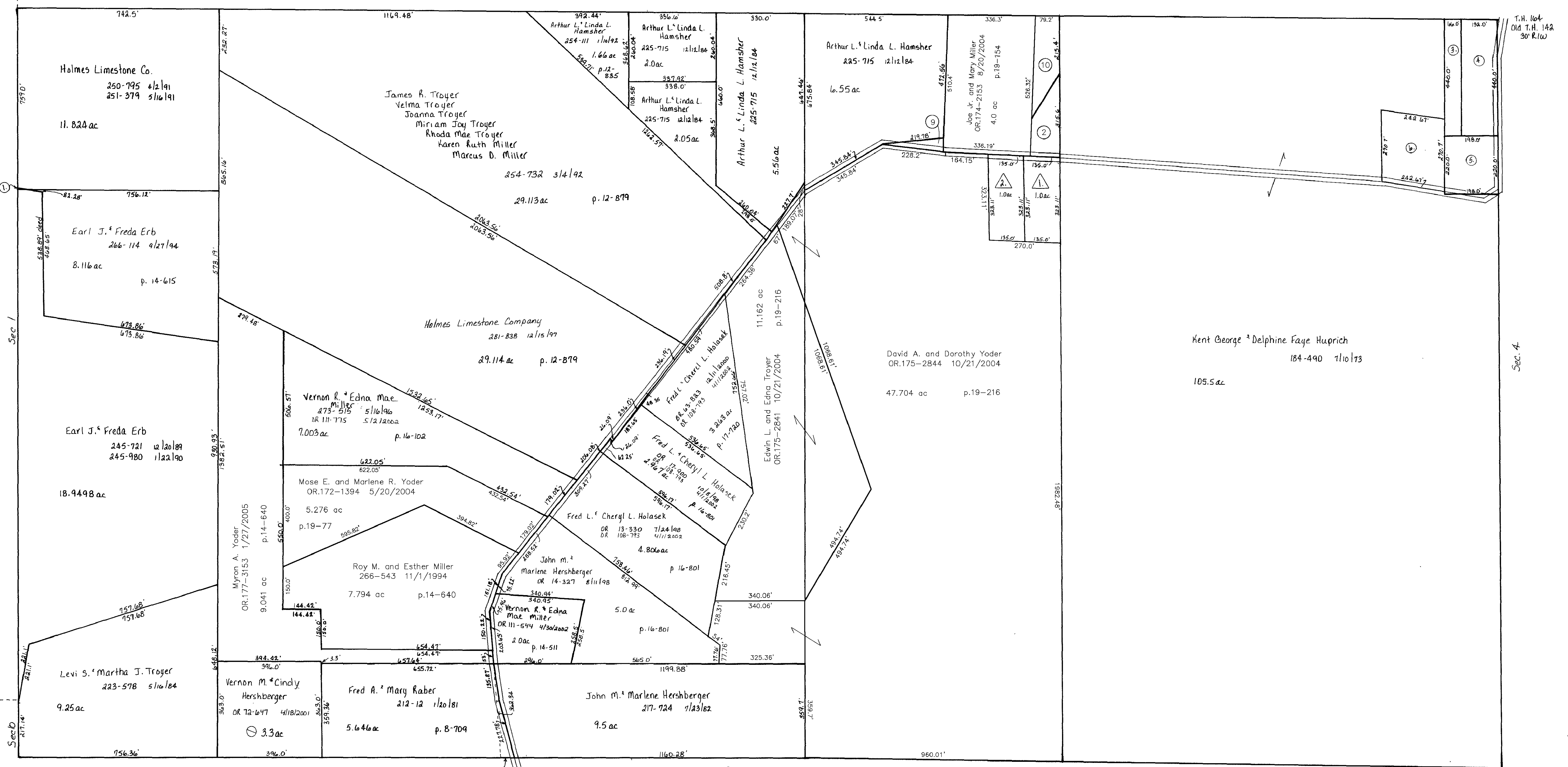


Walnut Creek Twp.



- ① HOLMES LIMESTONE CO.  
265-116 9/27/1994  
0.0002 ac p.14-15
- ② HUPRICH KENT GEORGE AND DELPHINE FAYE  
263-588 3/2/1994  
0.52 ac p.8-33
- ③ SCHLABACH WILLIS  
195-104 7/23/1976  
0.667 ac
- ④ SCHLABACH WILLIS  
195-104 7/23/1976  
1.33 ac
- ⑤ SCHLABACH HENRY C. AND LEONA I. CO-TRUSTEES  
OR.0008-504 5/16/1998  
1.0 ac p.7-594
- ⑥ HUPRICH DALE F. AND AMY L.  
OR.0055-378 7/17/2000  
1.5 ac p.17-593
- ⑦ Not used
- ⑧ Not used

- ⑨ HAMSHER ARTHUR L. AND LINDA L.  
OR.0174-1507 8/12/2004  
0.1 ac p.19-154
- ⑩ HUPRICH KENT GEORGE AND DELPHINE FAYE  
263-588 3/2/1994  
0.554 ac CAL
- T.H. 164  
018 T.H. 142  
30' R/W
- ⑪ Troyer's Habitat  
Plot 18-153 Platted 12/19/2001
- ⑫ REGAN EDDIE D. AND ROXANNA L.  
OR.0117-103 7/9/2002  
1.0 ac
- ⑬ HOLMES COUNTY HABITAT FOR HUMANITY, INC.  
OR.0097-508 12/27/2001  
1.0 ac

Last Revision: 1/27/2005

T- 8, R-4, Sec. 5 1/2  
Clark Township  
Holmes County, Ohio scale: 1"=200'

LET IT BE KNOWN, THIS MAP HAS BEEN PREPARED AS A REFERENCE GUIDE TO PROPERTY OWNERSHIP. WE BELIEVE THIS INFORMATION TO BE CORRECT AND CURRENT, HOWEVER, IT IS NOT INTENDED FOR ANY LEGAL USE, WHETHER IT BE IN SALES, TRANSFERS, TRADES, LEASES OF ANY TYPE, ETC., AND DO NOT ACCEPT RESPONSIBILITY FOR ERRORS OF ANY NATURE OR OMISSIONS CONTAINED HEREIN.

**C-30**