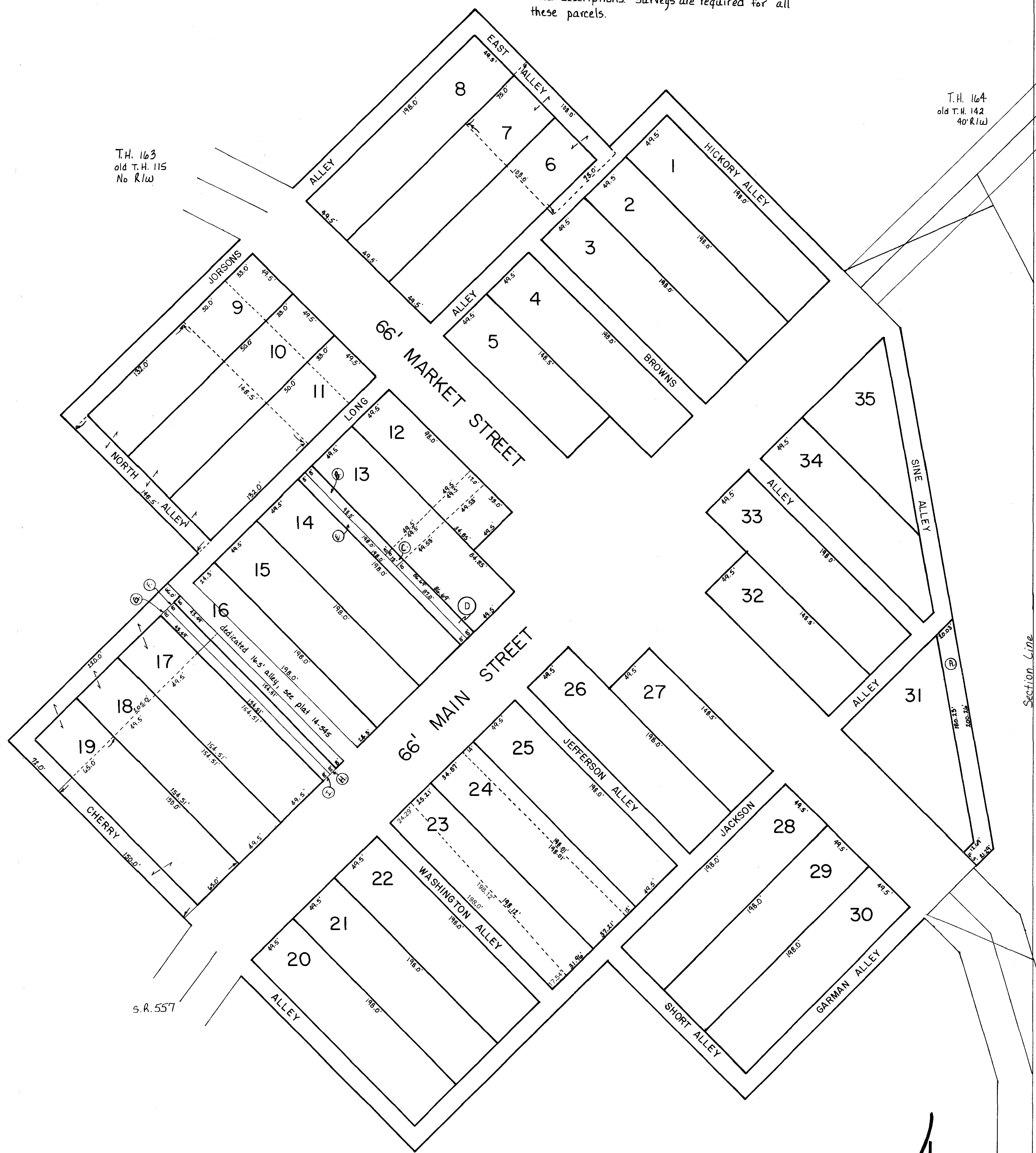


Village of Farmerstown
see deed vol. I, pg.188 for plat
platted as the Town of Farmersville

Alleys are 16.5' wide. Some alleys are not vacated on record, but nonetheless are covered by current deed descriptions. Surveys are required for all these parcels.



1	Alvin H. Lucinda Schlabach			201-404 230-907	4/4/78 4/18/86
2	Alvin H. Lucinda Schlabach			201-404 230-907	4/4/78 4/18/86
3	Alvin H. Lucinda Schlabach			230-905 230-907	4/18/86 4/18/86
4	Alvin H. Lucinda Schlabach			230-905 230-907	4/18/86 4/18/86
5	Alvin H. Lucinda Schlabach			230-905 230-907	4/18/86 4/18/86
6	Abe J. Sarah Haber	S.F.T.	W pt.	201-435	4/6/78
6	Abe J. Sarah Haber	S.F.T. includes pt. alley	E pt.	201-435	4/6/78
7	Abe J. Sarah Haber	S.F.T.	W pt.	201-435	4/6/78
7	Abe J. Sarah Haber	S.F.T. includes pt. alley	E pt.	201-435	4/6/78
8	Abe J. Sarah Haber			447-831	7/10/90
9	Eli J. Mattie Barkman	includes pt. alley S.F.T.	W pt. Md. pt.	222-149 227-106	3/9/49 5/7/85
9	Eli J. Mattie Barkman	S.F.T.		222-149 227-106	3/9/49 5/7/85
9	Emanuel J. Iva Mae Haber		E pt.	252-641	9/5/91
10	Eli J. Mattie Barkman	includes pt. alley S.F.T.	W pt.	222-149 227-106	3/9/49 5/7/85
10	Eli J. Mattie Barkman	S.F.T.	Md. pt.	222-149 227-106	3/9/49 5/7/85
10	Emanuel J. Iva Mae Haber		E pt.	252-641	9/5/91
11	Eli J. Mattie Barkman	includes pt. alley S.F.T.	W pt.	222-149 227-106	3/9/49 5/7/85
11	Eli J. Mattie Barkman	S.F.T.	Md. pt.	222-149 227-106	3/9/49 5/7/85
11	Emanuel J. Iva Mae Haber		E pt.	252-641	9/5/91
12	Raymond * Lucille Gingerich	.110 ac p. 13-3	N pt.	OR 110-724	4/23/2002
12	Raymond * Lucille Gingerich	.018 ac p. 13-3	Md. pt.	OR 110-724	4/23/2002
12	Marvin R. and Edna R. Yoder	0.039 ac p. 12-728	S pt.	OR 169-310	12/24/ 2003
13	Raymond * Lucille Gingerich	.110 ac p. 13-3	N pt.	OR 110-724	4/23/2002
13	Raymond * Lucille Gingerich	.016 ac p. 13-3	Md. pt.	OR 110-724	4/23/2002
13	Marvin R. and Edna R. Yoder	0.098 ac p. 12-728	S pt.	OR 169-310	12/24/ 2003
14	Roman A. Edna Mae Stutzman			253-379	11/8/91
15	Roman A. Edna Mae Stutzman			253-379	11/8/91
16	Dwight * Sherry Hershberger	.091 ac p. 14-512	Su pt.	OR 55-123	7/12/2000
16	Roman A. Edna Mae Stutzman	.11 ac p. 14-519	E pt.	253-379	11/8/91
16	Trustees of Clark Township	.009 ac p. 14-512	Wu pt.	264-499	5/17/94
16	Trustees of Clark Township	dedicated & accepted for road purposes	Md. pt.	p. 14-545	6/28/98
17	Dwight * Sherry Hershberger	.170 ac p. 14-512	S pt.	OR 55-123	7/12/2000
17	Board of Township Trustees of Clark Township	S.F.T.	N pt.	134-120	3/25/57
18	Dwight * Sherry Hershberger	.170 ac p. 14-512	S pt.	OR 55-123	7/12/2000
18	Board of Township Trustees of Clark Township	S.F.T.	N pt.	134-120	3/25/57
19	Gerber & Sons, Inc.		S pt.	221-159	8/5/83
19	Board of Township Trustees of Clark Township	S.F.T.	N pt.	134-120	3/25/57
20	Atlee Hostetler - see card			96-224	6/5/26
21	Myron J. and Marie A. Miller			OR 175-3324	10/28/ 2004
22	Myron J. and Marie A. Miller			OR 175-3324	10/28/ 2004

23	Roman D. Susie Miller	.129 ac p. 9-44	E pt.	218-801	1/5/82
23	Myron J. and Marie A. Miller	p. 19-224 0.095 ac	W pt.	OR 175-3324	10/28/ 2004
24	Amanda D. Troyer	.061 ac p. 9-44	E pt.	221-310	5/19/83
24	Roman D. Susie Miller	.163 ac p. 9-44	W pt.	175-148 218-801	10/17/80 1/5/82
25	Amanda D. Troyer	.225 ac p. 9-44		221-310	5/19/83
26	Eli J. Mattie Barkman			122-149 227-106	3/9/49 5/7/85
27	Roy E. Mary Barkman			199-526 OR 17-549	9/9/77 10/2/88
28	Eli E. Katie Yoder			OR 51-409	5/2/2000
29	Eli E. Katie Yoder			OR 51-409	5/2/2000
30	Eli E. Katie Yoder			OR 51-409	5/2/2000
31	Farmerstown Real Estate, Ltd.			OR 111-704	5/2/2002
32	Robert W. Andrews			233-874	12/30/86
33	Robert W. Andrews			233-874	12/30/86
34	Robert W. Andrews			233-874	12/30/86
35	Robert W. Andrews			233-874	12/30/86

	unnumbered parcels	ac.			
A	Farmerstown Real Estate, Ltd.	p. 11-68	.078	OR 111-704	5/2/2002
B	Raymond * Lucille Gingerich	p. 13-3	.019	OR 110-724	4/23/2002
C	Raymond * Lucille Gingerich	p. 13-3	.003	OR 110-724	4/23/2002
D	Marvin R. and Edna R. Yoder	p. 12-728	0.016	OR 169-310	12/24/ 2003
E	Roman A. Edna Mae Stutzman	p. 12-513	.038	253-379	11/8/91
F	Trustees of Clark Township	p. 14-545	.008		
G	Board of Township Trustees of Clark Township	p. 14-545	.008		
H	Dwight * Sherry Hershberger	p. 14-545	.029	OR 55-123	7/12/2000
I	Dwight * Sherry Hershberger	p. 14-545	.029	OR 55-123	7/12/2000
J					
K					
L					

LET IT BE KNOWN, THIS MAP HAS BEEN PREPARED AS A REFERENCE GUIDE TO PROPERTY OWNERSHIP. WE BELIEVE THIS INFORMATION TO BE CORRECT AND CURRENT. HOWEVER, IT IS NOT INTENDED FOR ANY LEGAL USE, WHETHER IT BE IN SALES, TRANSFERS, TRADES, LEASES OF ANY TYPE, ETC., AND DO NOT ACCEPT RESPONSIBILITY FOR ERRORS OF ANY NATURE OR OMISSIONS CONTAINED HEREIN.

unincorporated
FARMERSTOWN VILLAGE
T-8, R-5, Sec. 12 scale: 1" = 50'