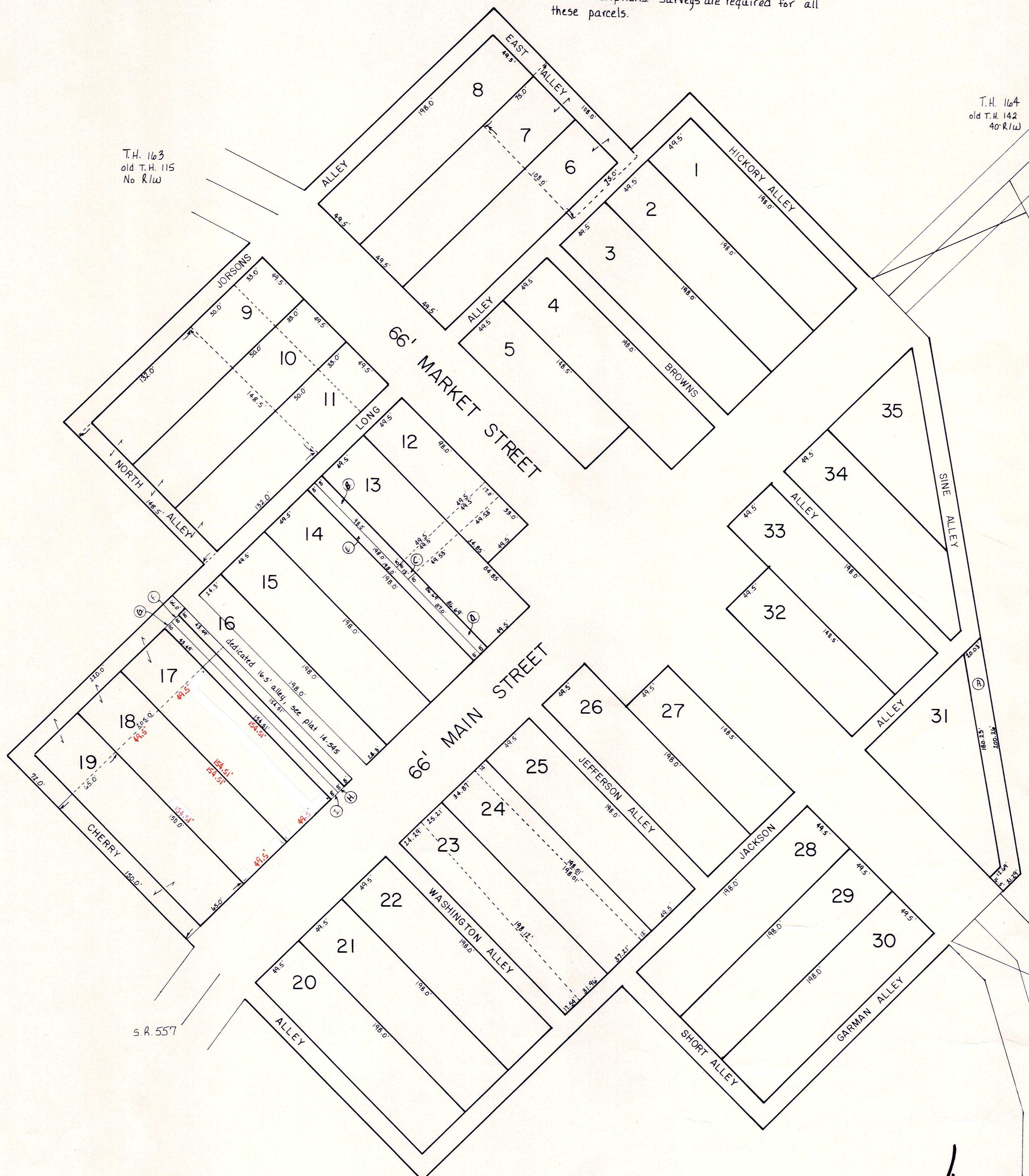


Village of Farmerstown
see deed vol. I, pg. 188 for plat
platted as the Town of Farmersville

Alleys are 16.5' wide. Some alleys are not vacated on record, but nonetheless are covered by current deed descriptions. Surveys are required for all these parcels.



1	Alvin H. Lucinda Schlabach			201-404 230-907	4/14/78 4/18/86
2	Alvin H. Lucinda Schlabach			201-404 230-907	4/14/78 4/18/86
3	Alvin H. Lucinda Schlabach			230-905 230-907	4/18/86 4/18/86
4	Alvin H. Lucinda Schlabach			230-905 230-907	4/18/86 4/18/86
5	Alvin H. Lucinda Schlabach			230-905 230-907	4/18/86 4/18/86
6	Abe J. Sarah Raber	S.F.T.	W pt.	201-435	4/6/78
6	Abe J. Sarah Raber	S.F.T. includes pt. alley	E pt.	201-435	4/6/78
7	Abe J. Sarah Raber	S.F.T.	W pt.	201-435	4/6/78
7	Abe J. Sarah Raber	S.F.T. includes pt. alley	E pt.	201-435	4/6/78
8	Abe J. Sarah Raber			247-831	7/12/90
9	Eli J. Mattie Barkman	includes pt. alley S.F.T.	W pt.	122-149 227-106	3/9/49 5/7/85
9	Eli J. Mattie Barkman	S.F.T.	Mid pt.	122-149 227-106	3/9/49 5/7/85
9	Emanuel J. Iva Mae Raber		E pt.	252-641	4/5/91
10	Eli J. Mattie Barkman	includes pt. alley S.F.T.	W pt.	122-149 227-106	3/9/49 5/7/85
10	Eli J. Mattie Barkman	S.F.T.	Mid pt.	122-149 227-106	3/9/49 5/7/85
10	Emanuel J. Iva Mae Raber		E pt.	252-641	4/5/91
11	Eli J. Mattie Barkman	includes pt. alley S.F.T.	W pt.	122-149 227-106	3/9/49 5/7/85
11	Eli J. Mattie Barkman	S.F.T.	Mid pt.	122-149 227-106	3/9/49 5/7/85
11	Emanuel J. Iva Mae Raber		E pt.	252-641	4/5/91
12	Farmerstown Investors	.110ac p. 13-3	N pt.	253-36	10/4/91
12	Farmerstown Investors	.018ac p. 13-3	Mid pt.	253-36	10/4/91
12	Mark R. Fannie D. Troyer Amish Helping Fund Jay E. Wanda L. Miller 274-AS 12/197 Jay E. Wanda L. Miller 274-AS 12/197	.039ac p. 12-729	S pt.	274-525 252-471	7/20/90 8/13/91
13	Farmerstown Investors	.110ac p. 13-3	N pt.	253-36	10/4/91
13	Farmerstown Investors	.018ac p. 13-3	Mid pt.	253-36	10/4/91
13	Mark R. Fannie D. Troyer Amish Helping Fund Jay E. Wanda L. Miller 274-AS 12/197 Jay E. Wanda L. Miller 274-AS 12/197	.039ac p. 12-729	S pt.	274-525 252-471	7/20/90 8/13/91
14	Roman A. Edna Mae Stutzman			253-379	11/8/91
15	Roman A. Edna Mae Stutzman			253-379	11/8/91
16	Dan D. Esther Hershberger Balco Machine, Inc.	.051ac p. 14-512	S pt.	264-482	2/12/98
16	Roman A. Edna Mae Stutzman	.110ac p. 12-513	E pt.	253-379	11/8/91
16	Trustees of Clark Township dedicated & accepted for road purposes	.009ac p. 14-512	N pt.	264-479	5/17/94
16	Dan D. Esther Hershberger Balco Machine, Inc.	.110ac p. 14-512	S pt.	264-482	2/12/98
17	Dan D. Esther Hershberger Balco Machine, Inc.	.110ac p. 14-512	S pt.	264-482	2/12/98
17	Dan D. Esther Hershberger Balco Machine, Inc.	.110ac p. 14-512	S pt.	264-482	2/12/98
17	Board of Township Trustees of Clark Township	S.F.T.	N pt.	134-120	3/15/57
18	Dan D. Esther Hershberger Balco Machine, Inc.	.110ac p. 14-512	S pt.	264-482	2/12/98
18	Board of Township Trustees of Clark Township	S.F.T.	N pt.	134-120	3/15/57
19	Gerber & Sons, Inc.		S pt.	221-159	8/5/83
19	Board of Township Trustees of Clark Township	S.F.T.	N pt.	134-120	3/15/57
20	Atlee Hostetler - see card			96-224	6/13/26
21	Roy A. Cindy Miller			240-681	4/21/88
22	Roy A. Cindy Miller			240-681	4/21/88

23	Roman D. Susie Miller	.129ac p. 9-44	E pt.	218-801	1/12/82
23	Roy A. Cindy Miller		W pt.	240-681	4/21/88
24	Amanda D. Troyer	.061ac p. 9-44	E pt.	221-310	5/19/83
24	Roman D. Susie Miller	.163ac p. 9-44	W pt.	175-148 218-801	10/9/70 1/12/82
25	Amanda D. Troyer	.225ac p. 9-44		221-310	8/19/83
26	Eli J. Mattie Barkman			122-149 227-106	3/9/49 5/7/85
27	Roy E. Mary Barkman			199-526 247-597	9/9/77 10/12/88
28	Emanuel H. Fannie E. Yoder			147-98 231-211	1/12/82 5/20/86
29	Emanuel H. Fannie E. Yoder			147-98 231-211	1/12/82 5/20/86
30	Emanuel H. Fannie E. Yoder			147-98 231-211	1/12/82 5/20/86
31	Producers Livestock Association			231-511	6/18/86
32	Robert W. Andrews			233-874	12/30/86
33	Robert W. Andrews			233-874	12/30/86
34	Robert W. Andrews			233-874	12/30/86
35	Robert W. Andrews			233-874	12/30/86

	unnumbered parcels	ac.			
A	Producers Livestock Association	p. 11-78 .078	231-511	6/18/86	
B	Farmerstown Investors	p. 13-3 .019	253-36	10/4/91	
C	Farmerstown Investors	p. 13-3 .003	253-36	10/4/91	
D	Mark R. Fannie D. Troyer Jay E. Wanda L. Miller Amish Helping Fund	p. 12-729 .016	274-525 252-471 274-525	7/20/90 8/13/91 7/20/90	
E	Roman A. Edna Mae Stutzman	p. 12-513 .038	253-379	11/8/91	
F	Trustees of Clark Township	p. 14-525 .008			
G	Board of Township Trustees of Clark Township	p. 14-525 .008			
H	Dan D. Esther Hershberger Balco Machine, Inc.	p. 14-525 .029	264-482	2/12/98	
I	Dan D. Esther Hershberger Balco Machine, Inc.	p. 14-525 .029	264-482	2/12/98	
J					
K					
L					

LET IT BE KNOWN, THIS MAP HAS BEEN PREPARED AS A REFERENCE GUIDE TO PROPERTY OWNERSHIP. WE BELIEVE THIS INFORMATION TO BE CORRECT AND CURRENT, HOWEVER, IT IS NOT INTENDED FOR ANY LEGAL USE, WHETHER IT BE IN SALES, TRANSFERS, TRADES, LEASES OF ANY TYPE, ETC., AND DO NOT ACCEPT RESPONSIBILITY FOR ERRORS OF ANY NATURE OR OMISSIONS CONTAINED HEREIN.

unincorporated
FARMERSTOWN VILLAGE
T-8, R-5, Sec. 12 scale: 1" = 50'

C-18A