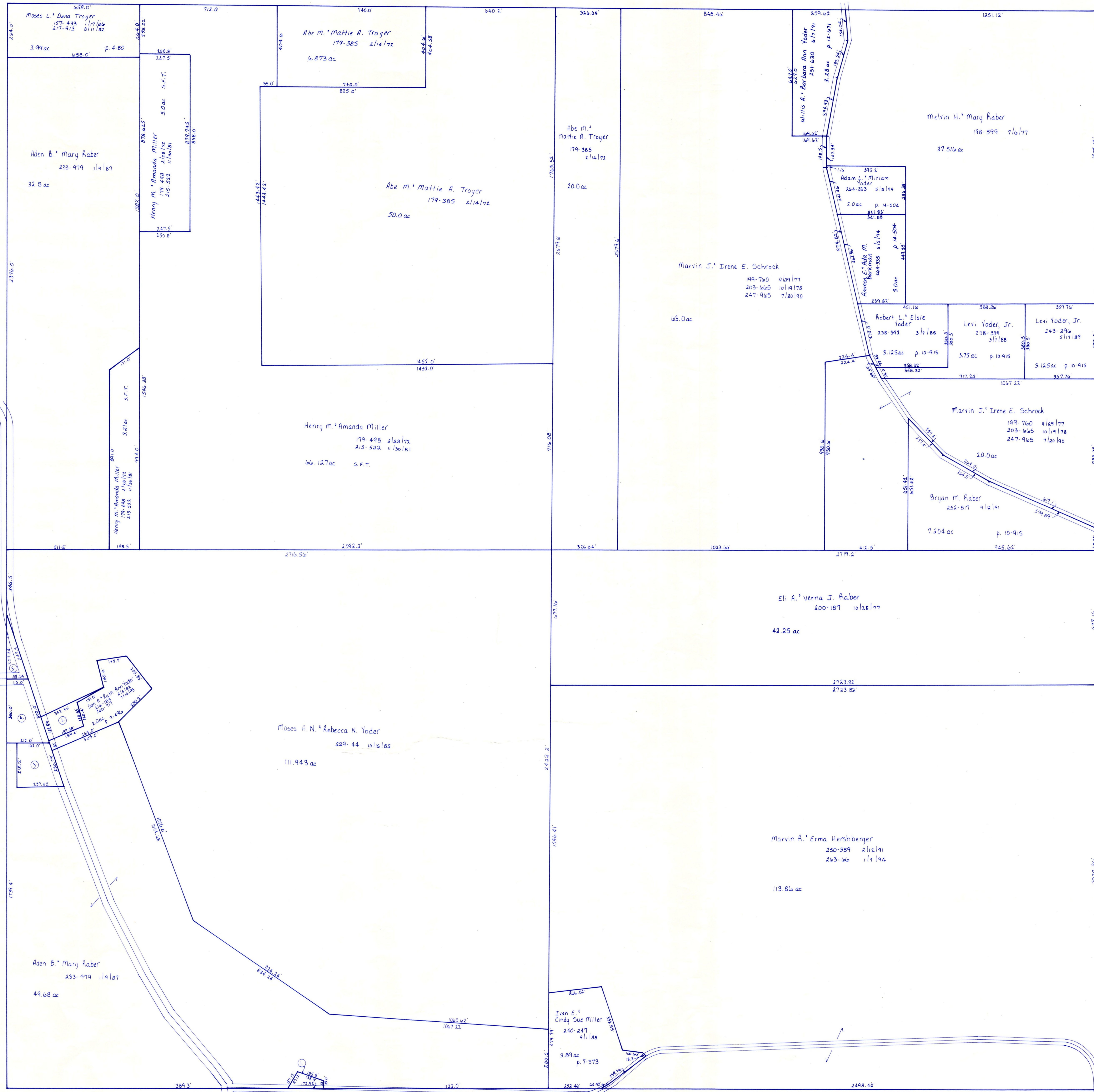


Sec. 7

T.H. 190
Old T.H. 103
36' R/W



C.H. 600
Old C.H. 60
60' R/W

T.H. 119
Old n^o same
60' R/W

T.H. 190
Old T.H. 103
36' R/W

T.H. 188
Old T.H. 118
30' R/W

1 SW	RABER	ADEN B. AND MARY	233-979	1/9/87	.19
2 SW	YODER	DAN A. AND RUTH ANN	260-715	7/14/93	14-252 .357
3 SW	EAST HOLMES	BOARD OF EDUCATION	245-558	12/6/89	12-340 1.0
			245-886	1/16/90	
4 SW	THE CLARK LOCAL	BOARD OF EDUCATION	130-256	11/22/54	1.0
5 SW	WISLEY	HENRY A. AND EDNA	176-29	1/25/71	.25
			215-538	7/6/81	

6/13/94
PRINTED

T-8, R-5, Sec. 14
Clark Township
Holmes County, Ohio scale: 1" = 200'

LET IT BE KNOWN, THIS MAP HAS BEEN PREPARED AS A REFERENCE GUIDE TO PROPERTY OWNERSHIP. WE BELIEVE THIS INFORMATION TO BE CORRECT AND CURRENT. HOWEVER, IT IS NOT INTENDED FOR ANY LEGAL USE, WHETHER IT BE IN SALES, TRANSFERS, TRADES, LEASES OF ANY TYPE, ETC., AND DO NOT ACCEPT RESPONSIBILITY FOR ERRORS OF ANY NATURE OR OMISSIONS CONTAINED HEREIN.

C-8