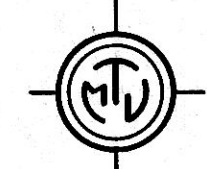
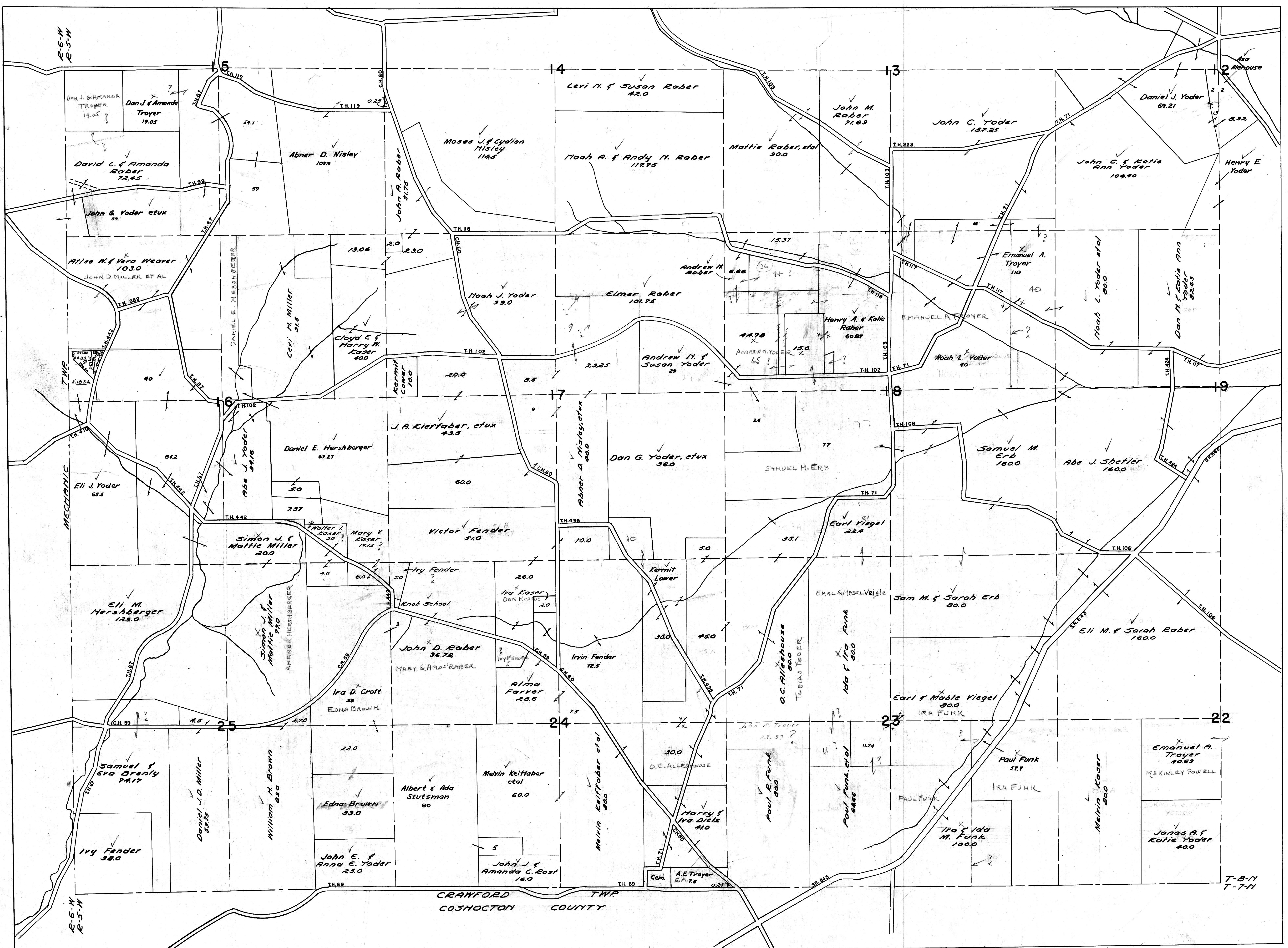


T.B.R.S. Sec 14
I. EDWARD R. ROSS
L.S. 7143 L.S. 1938
E. EDWARD R. ROSS
L.S. 7143 L.S. 1938
207/302



HOLMES COUNTY
CLARK TOWNSHIP
S.W. PART

SCALE: 1" = 660'

KARL SNYDER - COUNTY ENGINEER
Merton T. Jones - Reg. Prof. Eng. & Surv.