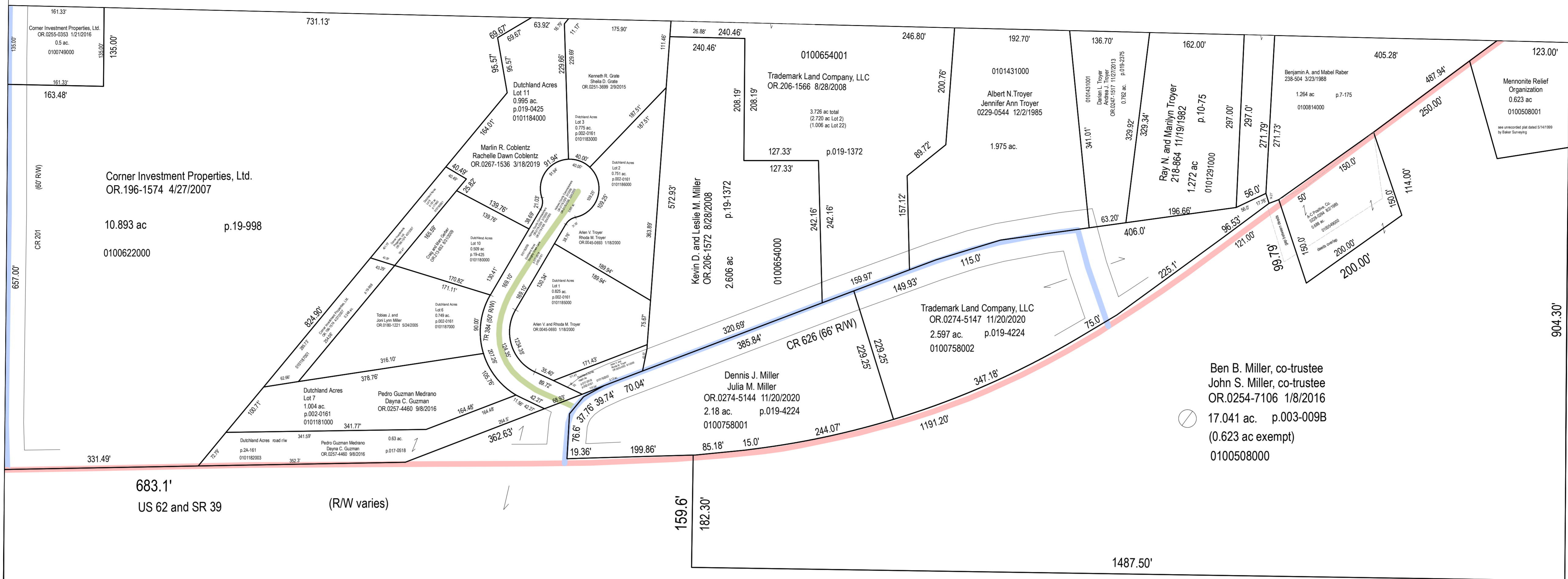


B-13A

B-13B



683.1' US 62 and SR 39 (RW varies)

159.6' 182.30'

1487.50' 1482.36'

904.30'

B-08

T9 R6 4th Qtr
Lot 2
B-13D

B-13C

Ben B. Miller, co-trustee
John S. Miller, co-trustee
OR.0254-7106 1/8/2016
OR.0254-7096 1/8/2016
109.62 ac.
0100507000

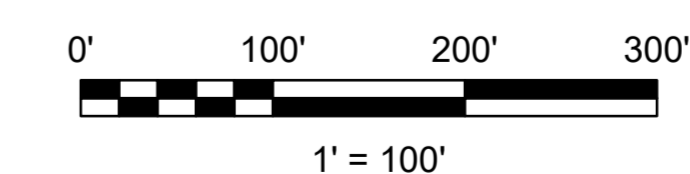
1833.48'

1737.78'

2627.46'

B-07

B-12



LET IT BE KNOWN, THIS MAP HAS BEEN PREPARED AS A REFERENCE GUIDE TO PROPERTY OWNERSHIP. WE BELIEVE THIS INFORMATION TO BE CORRECT AND CURRENT, HOWEVER IT IS NOT INTENDED FOR ANY LEGAL USE, WHETHER IT BE SALES, TRANSFERS, TRADES, LEASES OF ANY TYPE, ETC. AND DO NOT ACCEPT RESPONSIBILITY FOR ERRORS OF ANY NATURE OR OMISSIONS CONTAINED HEREIN.

S.F.T.
new survey required for next transfer

Last Revision: 1/4/2021



**.Lot 2, 4th Qtr
T-9, R-6
Berlin Twp.
Holmes County, Ohio**

B-13D