

B-09

B-14

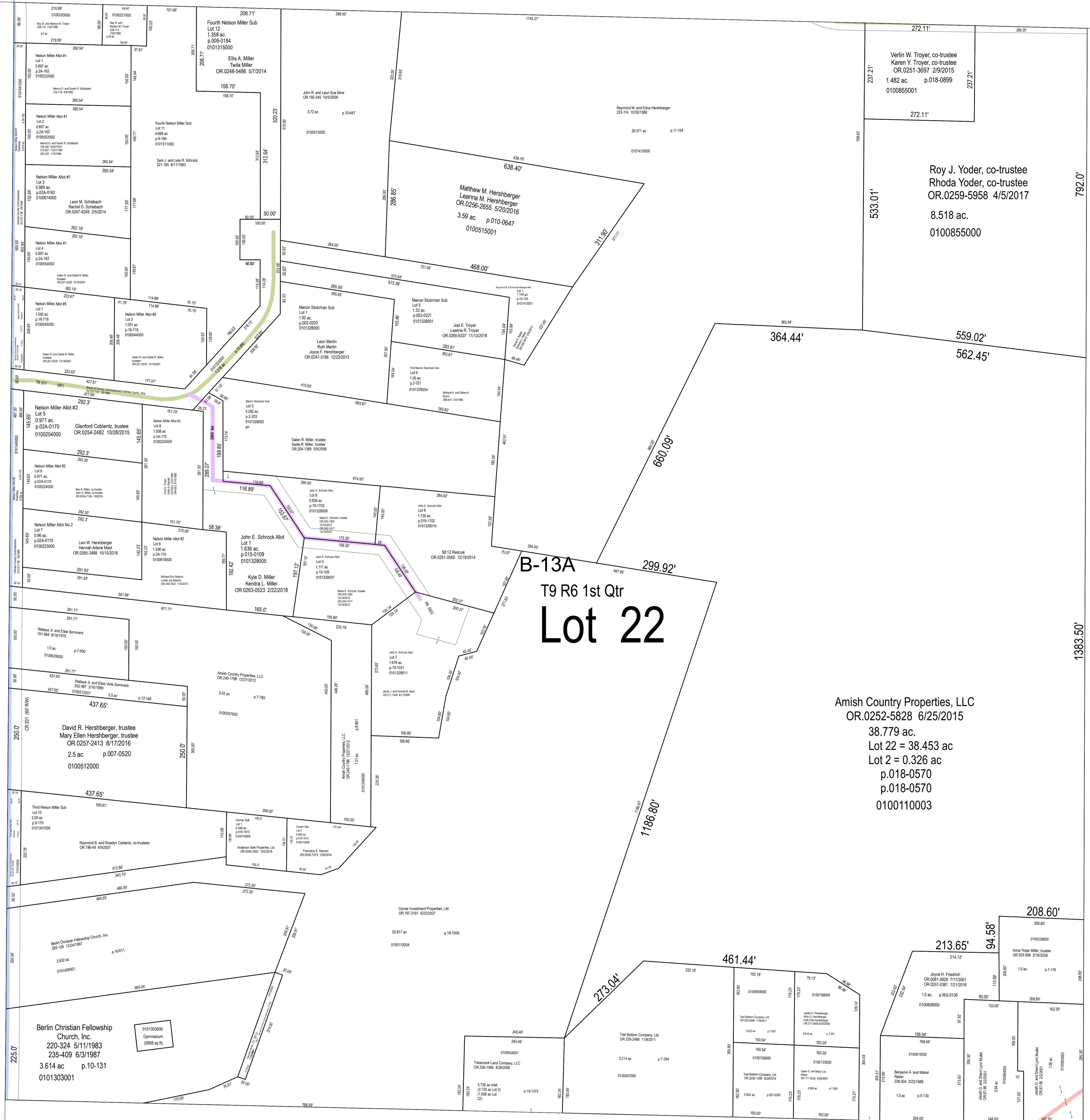
B-08

B-13B

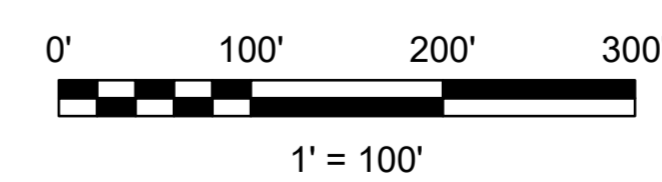
B-13A

T9 R6 1st Qtr

Lot 22



Amish Country Properties, LLC
 OR.0252-5828 6/25/2015
 38.779 ac.
 Lot 22 = 38.453 ac
 Lot 2 = 0.326 ac
 p.018-0570
 p.018-0570
 0100110003



LET IT BE KNOWN, THIS MAP HAS BEEN PREPARED AS A REFERENCE GUIDE TO PROPERTY OWNERSHIP. WE BELIEVE THIS INFORMATION TO BE CORRECT AND CURRENT, HOWEVER IT IS NOT INTENDED FOR ANY LEGAL USE, WHETHER IT BE SALES, TRANSFERS, TRADING, LEASES OF ANY TYPE, ETC. AND DO NOT ACCEPT RESPONSIBILITY FOR ERRORS OF ANY NATURE OR OMISSIONS CONTAINED HEREIN.

S.F.T.
 new survey required for next transfer

Last Revision: 1/3/2019

Lot 22, 1st Qtr.
 T-9, R-6
 Berlin Twp.
 Holmes County, Ohio

B-13A