

B-18D

B-13C

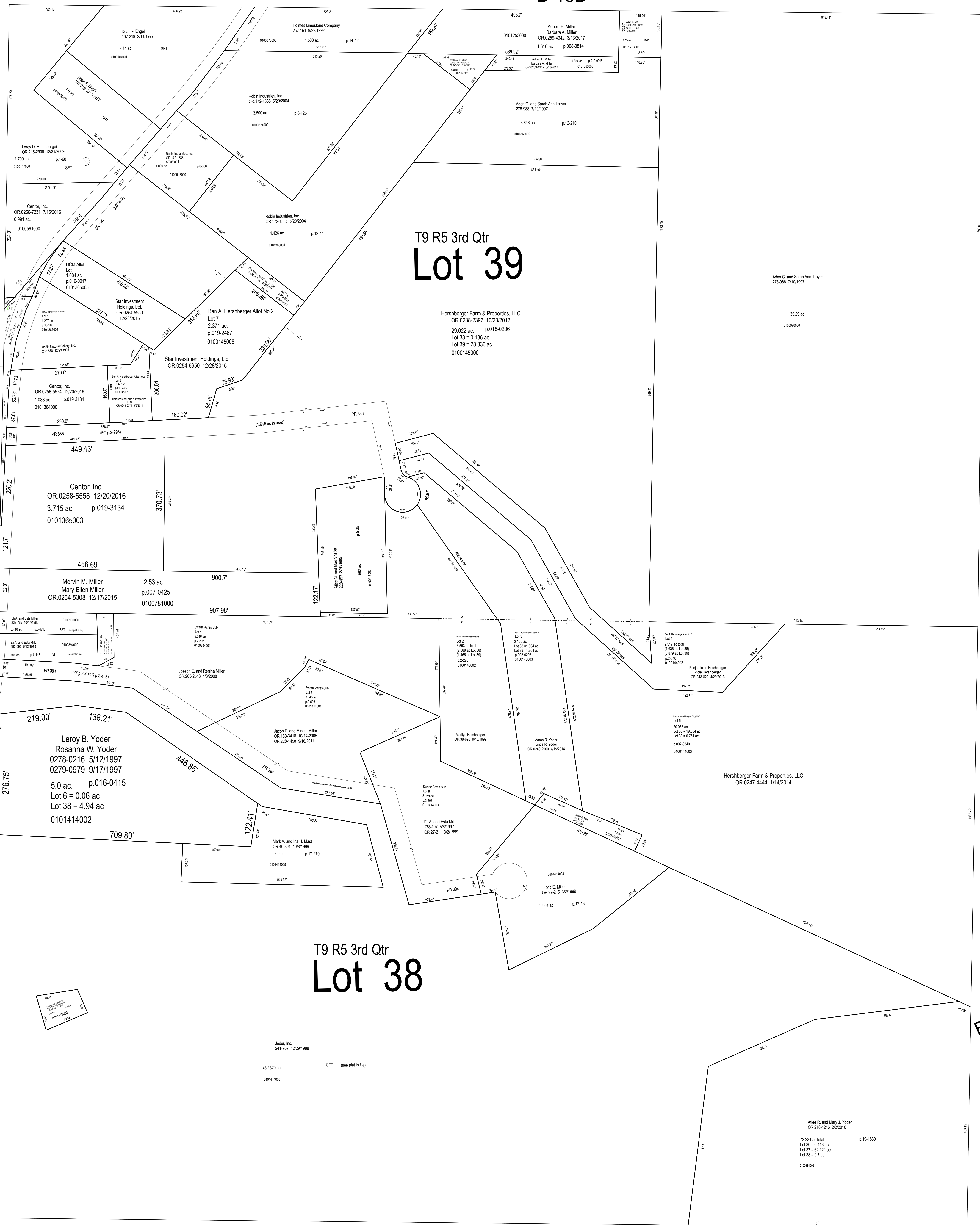
B-18C

T9 R5 3rd Qtr
Lot 39

Hershberger Farm & Properties, LLC
OR.0238-2397 10/23/2012
29.022 ac. p.018-0206
Lot 38 = 0.186 ac
Lot 39 = 28.836 ac
0100145000

B-12

T9 R5 3rd Qtr
Lot 38



LET IT BE KNOWN, THIS MAP HAS BEEN PREPARED AS A REFERENCE GUIDE TO PROPERTY OWNERSHIP. WE BELIEVE THIS INFORMATION TO BE CORRECT AND CURRENT, HOWEVER IT IS NOT INTENDED FOR ANY LEGAL USE, WHETHER IT BE SALES, TRANSFERS, TRADES, LEASES OF ANY TYPE, ETC. AND DO NOT ACCEPT RESPONSIBILITY FOR ERRORS OF ANY NATURE OR OMISSIONS CONTAINED HEREIN.

S.F.T.
new survey required for next transfer

Last Revision: 1/2/2018

Lots 38 & 39
3rd Qtr., T-9, R-5
Berlin Twp.
Holmes County, Ohio

B-17A