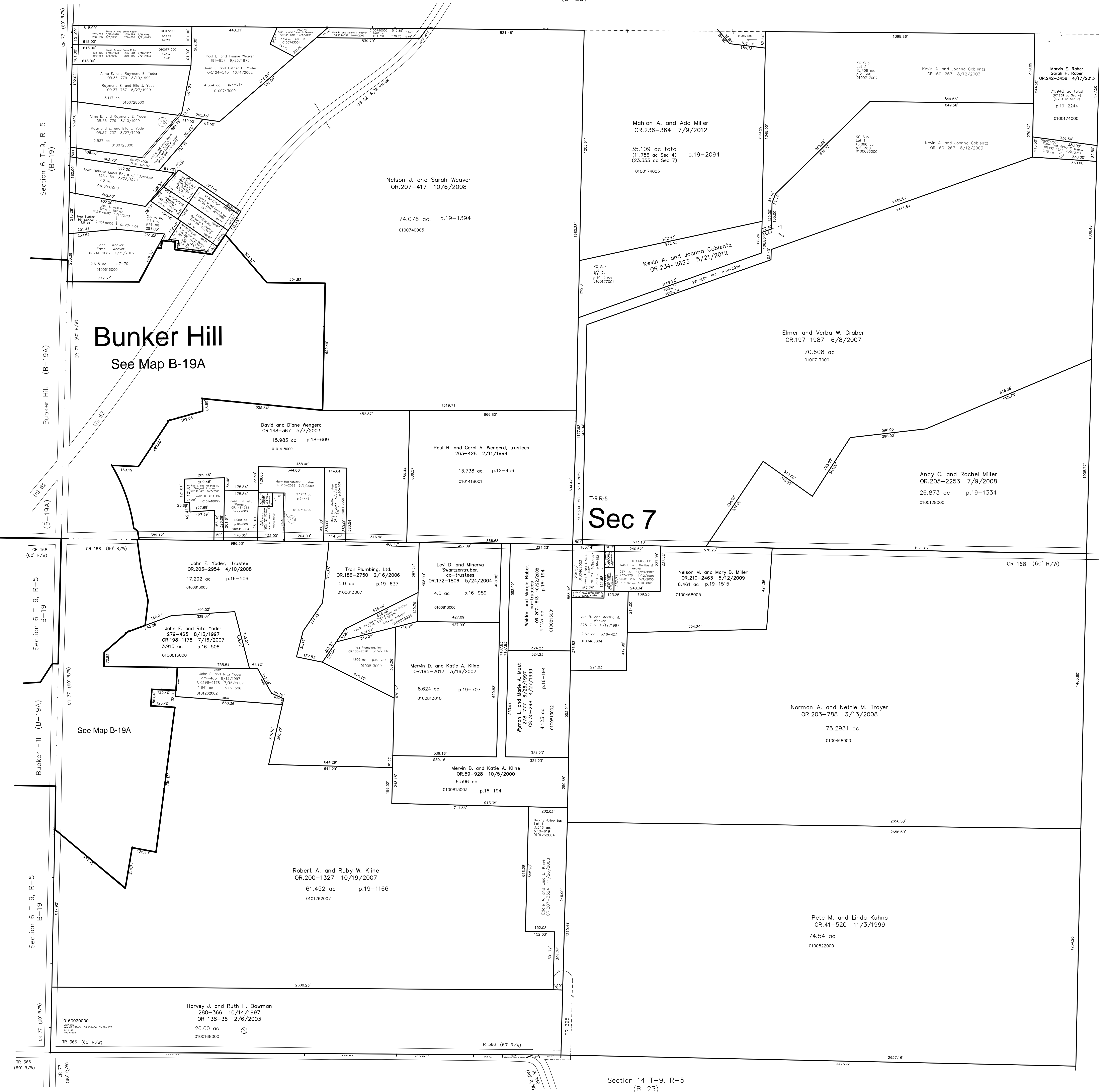


Section 4 T-9, R-5
(B-25)



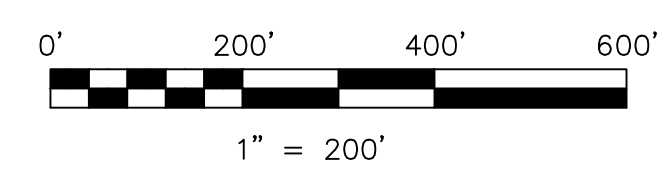
T-9 R-5
Sec 7

Sec. 8, T-9 R-5
Walnut Creek Township
(WC-05)

Last Revision: 4/17/2013

T-9, R-5, Sec. 7
Berlin Twp.
Holmes County, Ohio

B-24



LET IT BE KNOWN THIS MAP HAS BEEN PREPARED AS A REFERENCE GUIDE TO PROPERTY OWNERSHIP. WE BELIEVE THIS INFORMATION TO BE CORRECT AND CURRENT, HOWEVER IT IS NOT INTENDED FOR ANY LEGAL USE, WHETHER IT BE IN SALES, TRANSFERS, TRADES, LEASES OF ANY TYPE, ETC., AND DO NOT ACCEPT RESPONSIBILITY FOR ERRORS OF ANY NATURE OR OMISSIONS CONTAINED HEREIN.

S.F.T. new survey required
for next transfer

- se pt sw 1/4 **Beachy Hollow Subdivision**
Plat 18-619 Platted 5/15/2003
- ne 1/4 **KC Subdivision**
Plat 2-368 Platted 8/8/2003
- ne 1/4 **KC Subdivision First Addition**
Plat 19-2059 Platted 4/24/2012

- 0100660000 (75) Myron D. and Brando F. Miller, co-trustees
OR.236-1424 7/19/2012
0.046 ac p.8-640
- 0100726001 (16) Paul E. and Fannie Weaver
Owen E. and Esther P. Yoder
OR.169-327 12/24/2003
0.056 ac p.18-852