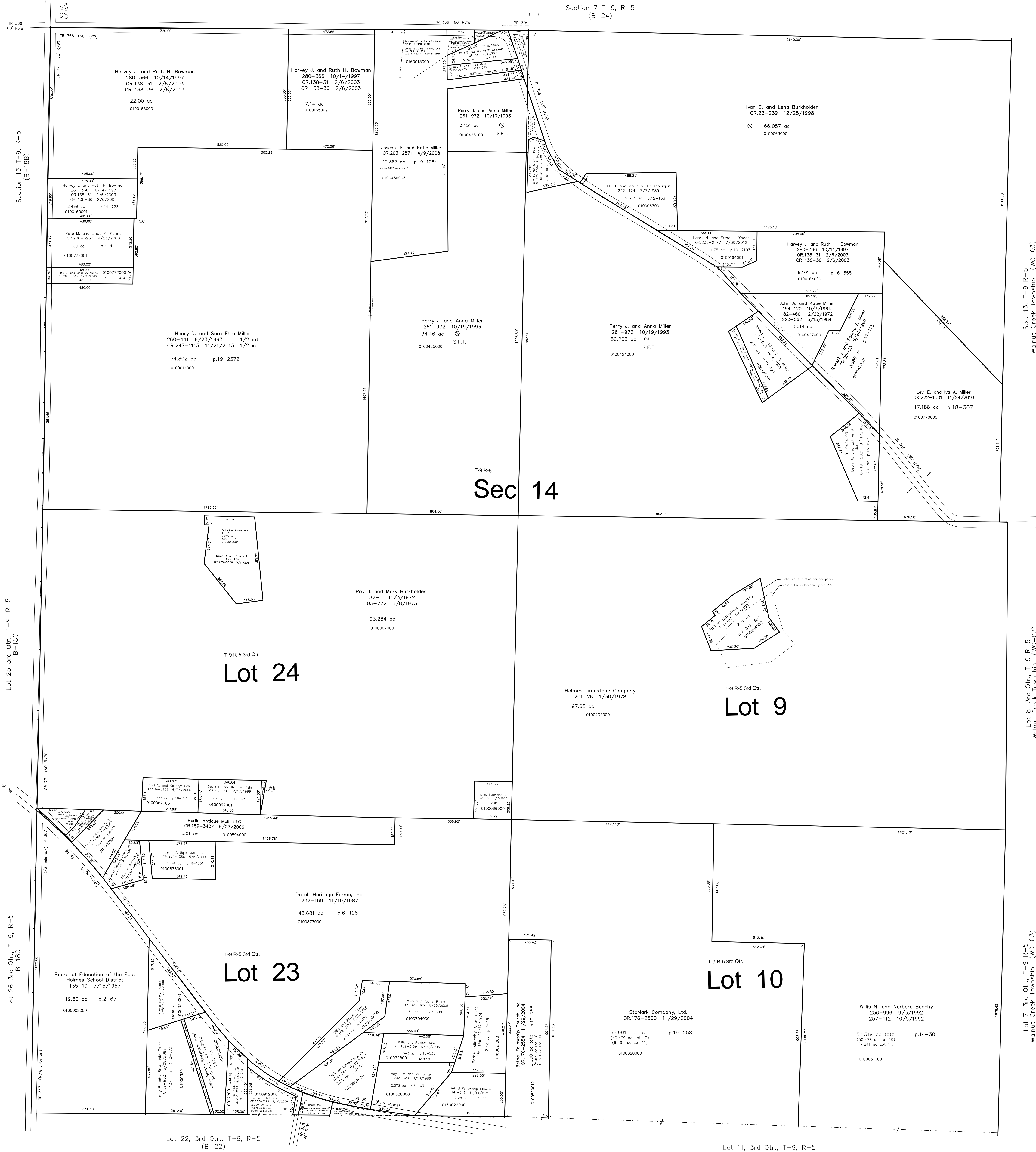


Section 7 T-9, R-5
(B-24)



T-9 R-5
Sec 14

T-9 R-5 3rd Qtr.
Lot 24

T-9 R-5 3rd Qtr.
Lot 9

T-9 R-5 3rd Qtr.
Lot 23

T-9 R-5 3rd Qtr.
Lot 10

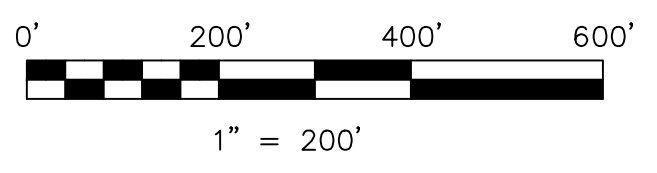
Sec. 13, T-9 R-5
Walnut Creek Township (WC-03)

Lot 8, 3rd Qtr., T-9 R-5
Walnut Creek Township (WC-03)

Lot 7, 3rd Qtr., T-9 R-5
Walnut Creek Township (WC-03)

n pt Lot 24 Burkholder Bottom Subdivision
Plat 19-1827 Platted 5/3/2011

0100067002 (74) David C. and Kathryn Fehr
OR 189-3134 6/26/2006
0.061 ac p.18-741



LET IT BE KNOWN, THIS MAP HAS BEEN PREPARED AS A REFERENCE GUIDE TO PROPERTY OWNERSHIP. WE BELIEVE THIS INFORMATION TO BE CORRECT AND CURRENT, HOWEVER IT IS NOT INTENDED FOR ANY LEGAL USE, WHETHER IT BE IN SALES, TRANSFERS, TRADED LEASES OF ANY TYPE, ETC., AND DO NOT ACCEPT RESPONSIBILITY FOR ERRORS OF ANY NATURE OR OMISSIONS CONTAINED HEREIN.

S.F.T. new survey required
for next transfer

Last Revision: 11/21/2013

T-9, R-5, Sec. 14
3rd Qtr., Lots 9, 10, 23, 24
Berlin Twp.
Holmes County, Ohio

B-23