

Lot 23, 3rd Qtr., T-9, R-5
(B-23)

Lot 10, 3rd Qtr., T-9, R-5
(B-23)

Lot 27, 3rd Qtr., T-9, R-5
(B-17)

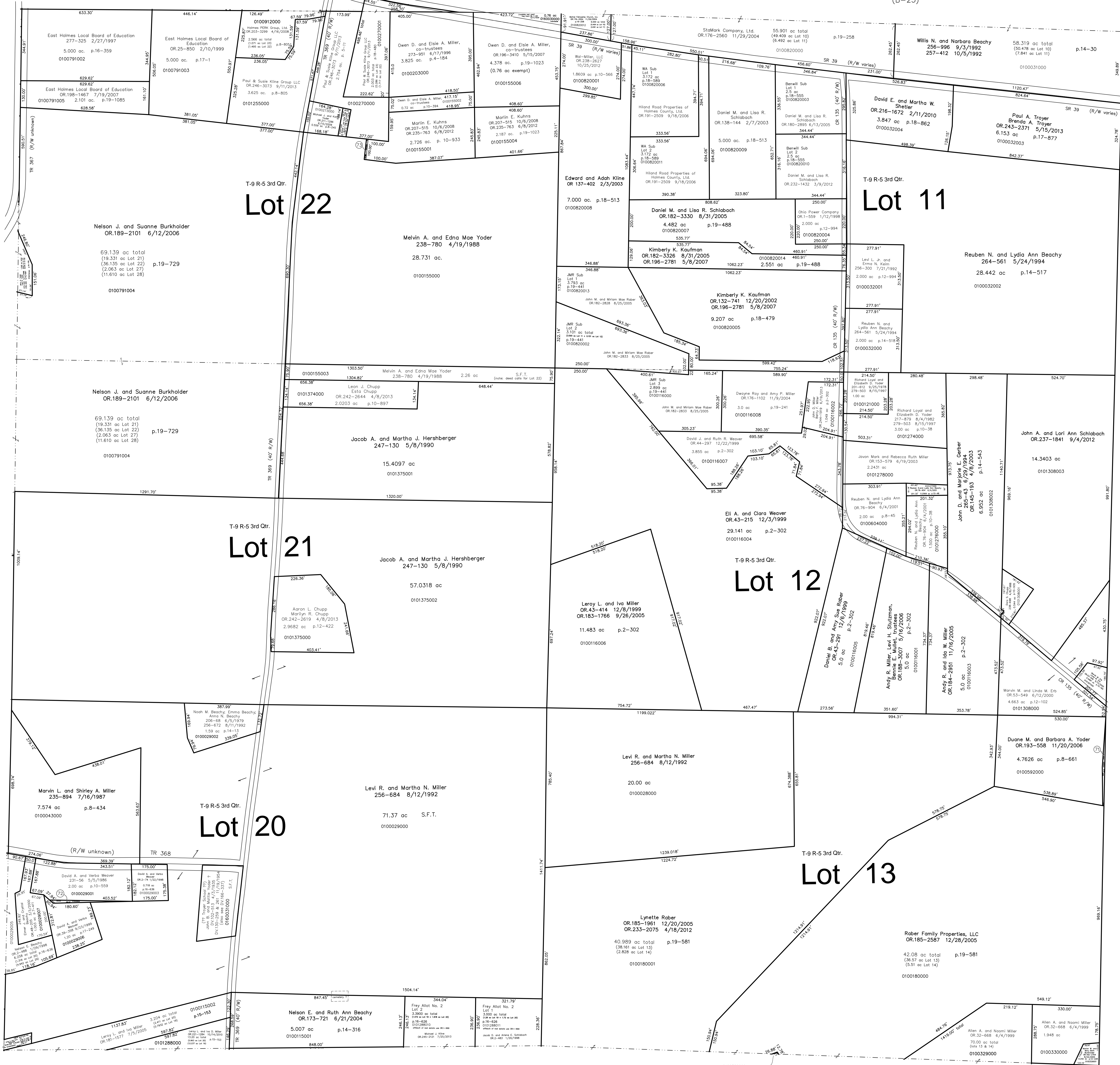
Lot 28, 3rd Qtr., T-9, R-5
(B-17)

Lot 29, 3rd Qtr., T-9, R-5
(B-17)

Lot 6, 3rd Qtr., T-9, R-5
Walnut Creek Township (WC-02)

Lot 5, 3rd Qtr., T-9, R-5
Walnut Creek Township (WC-02)

Lot 4, 3rd Qtr., T-9, R-5
Walnut Creek Township (WC-02)



Lot 19, 3rd Qtr., T-9, R-5
(B-21)

Lot 14, 3rd Qtr., T-9, R-5
(B-21)

see pt Lot 20 **Frey Allotment No. 2**
Plat 16-626 Platted 1/8/1998
affidavit for real estate use OR.1-999 1/21/1998

see pt Lot 20 **Sand Knob**
also see map B-17 Plat 18-111 Platted 10/31/2001

see pt Lot 11 **Benwill Subdivision**
Plat 18-555 Platted 3/19/2003

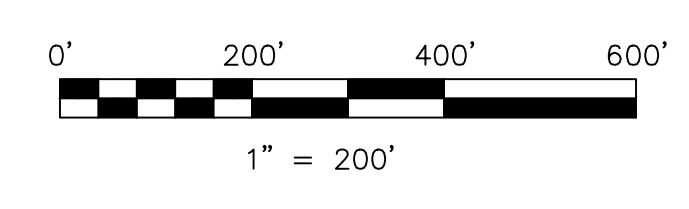
see pt Lot 11 **WA Subdivision**
Plat 18-589 Platted 4/16/2003

see pt Lot 12 **JMR Subdivision**
see pt Lot 11 Plat 19-441 Platted 6/30/2005

0100592001 (71) Wayne Yoder
OR.236-2106 7/27/2012
0.072 ac p.19-2089

0100029004 (72) David A. and Verba Weaver
OR.2-74 1/22/1998
0.07 ac p.16-636

0100155005 (73) Martin E. Kuhns
OR.207-516 10/6/2008
OR.235-763 6/8/2012
0.018 ac p.19-1023



S.F.T. new survey required
for next transfer

Last Revision: 9/11/2013

T-9, R-5, 3rd Qtr.
Lots 11, 12, 13, 20, 21, 22
Berlin Twp.
Holmes County, Ohio

B-22