

Lot 20, 3rd Qtr., T-9, R-5
(B-22)

Lot 13, 3rd Qtr., T-9, R-5
(B-22)

Lot 30 3rd Qtr., T-9, R-5
B-16

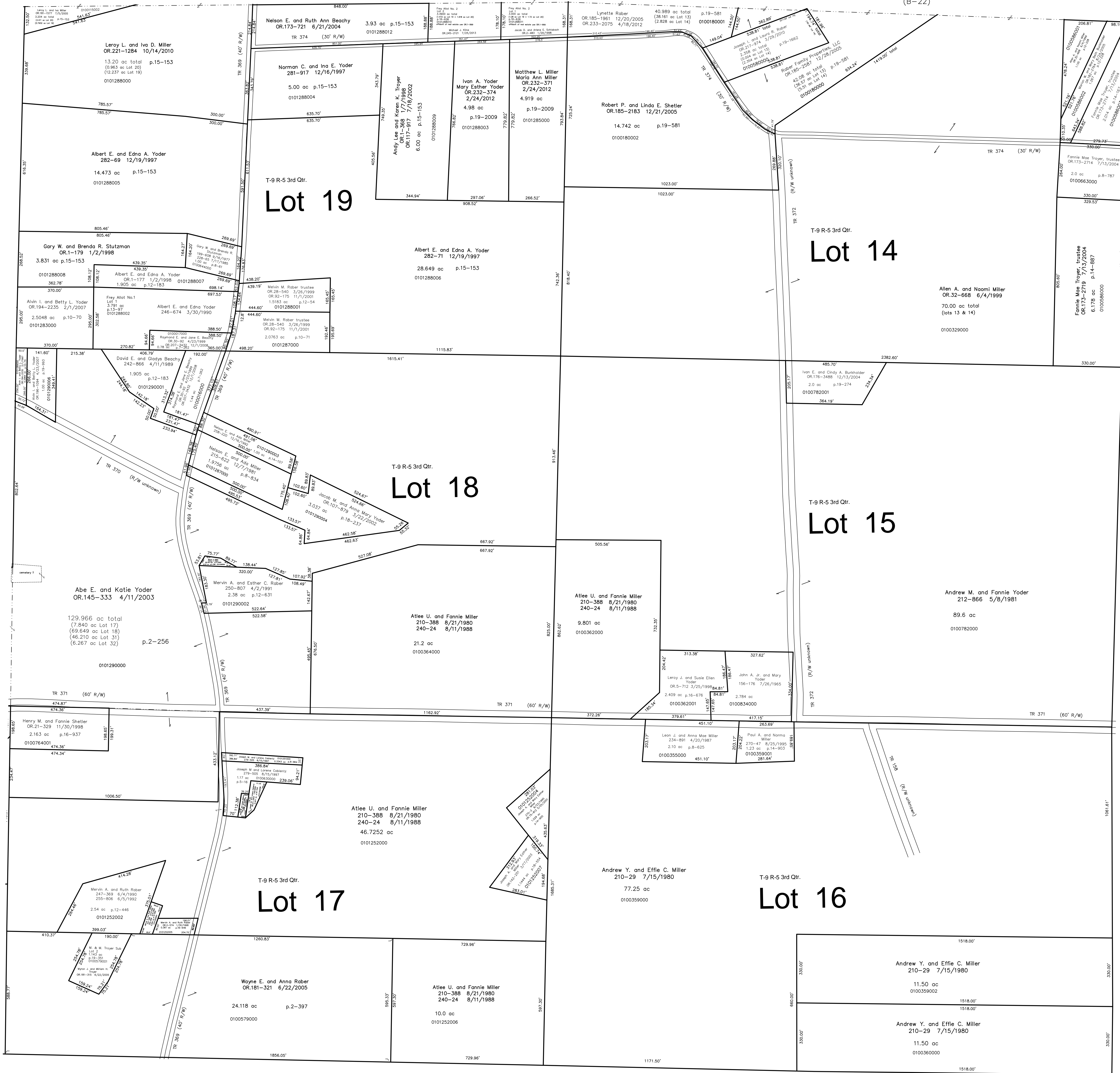
Lot 31 3rd Qtr., T-9, R-5
B-16

Lot 32 3rd Qtr., T-9, R-5
B-16

Lot 3 3rd Qtr T-9 R-5
Walnut Creek Township (WC-01)

Lot 2 3rd Qtr T-9 R-5
Walnut Creek Township (WC-01)

Lot 1 3rd Qtr T-9 R-5
Walnut Creek Township (WC-01)



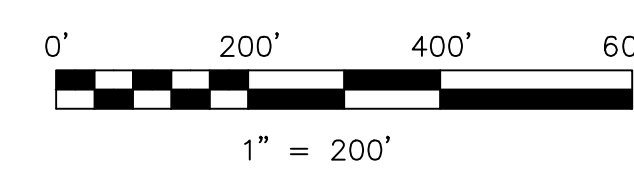
Sec 4 T-8, R-5
(C-10)

0100586004 (70) Willis R. Kline and Mary Miller
OR.196-1736 4/30/2007
0.041 ac p.17,642

pt Lot 19 Frey Allotment No.1
Plat 13-97 Platted 3/28/1990

pt Lot 19 Frey Allotment No. 2
Plat 16-626 Platted 1/8/1998
affidavit for real estate use OR-1-999 1/21/1998

pt Lot 17 M. & M. Troyer Subdivision Replat of Lot 1 & Additional Land
Plat 19-351 Platted 3/30/2005



LET IT BE KNOWN, THIS MAP HAS BEEN PREPARED AS A REFERENCE
GUIDE TO PROPERTY OWNERSHIP. WE BELIEVE THIS INFORMATION TO
BE CORRECT AND CURRENT, HOWEVER IT IS NOT INTENDED FOR ANY
LEGAL USE, WHETHER IT BE IN SALES, TRANSFERS, TRADES, LEASES
OF ANY TYPE, ETC., AND DO NOT ACCEPT RESPONSIBILITY FOR
ERRORS OF ANY NATURE OR OMISSIONS CONTAINED HEREIN.

S.F.T. new survey required
for next transfer

Last Revision: 7/25/2013

**T-9, R-5, 3rd Qtr.
Lots 14, 15, 16, 17, 18, 19
Berlin Twp.
Holmes County, Ohio**

B-21