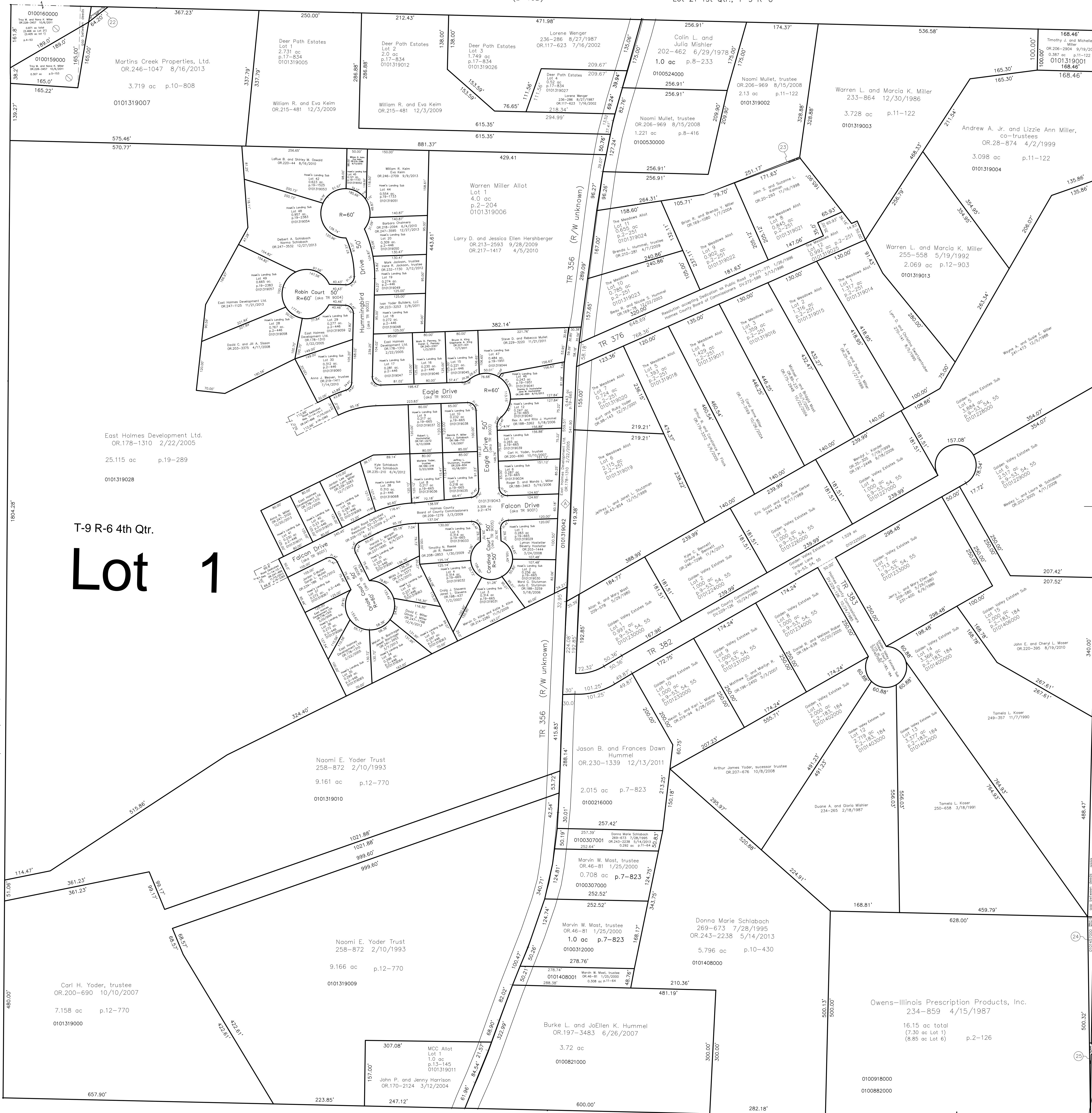


Berlin Township
(B-13B)

Lot 21 1st Qtr., T-9 R-6

Fractional Sec 15
T-9 R-5



T-9 R-6 4th Qtr.
Lot 1

- nr pt Deer Path Estates
Plot 17-834 Platted 3/28/2001
- sw pt MCC Allotment No. 1
Plot 13-145 Platted 12/27/1991
- nr pt The Meadows Allotment No. 1
Plot 2-251 Platted 8/24/1995
- nr pt Warren Miller Allotment No. 1
Plot 2-204 Platted 12/30/1987

- nr pt Golden Valley Estates Subdivision, First Add.
Plot 9-53, 54, 55 Platted 12/21/1979
- nr pt Golden Valley Estates Subdivision, Second Addition
Plot 2-183, 184 Platted 11/30/1984

- nr pt Hawk's Landing Subdivision
Covenants and restrictions appear on the individual plots listed below in addition to several documents found in the Holmes County Recorder's Office.

Road Dedication Phase 1 & 2
Plot 2-474 3/3/2009
Resolution 02-23-09-1 OR 209-1274

Hawk's Landing Subdivision Phase 1
Plot 19-665 Platted 4/4/2008

Hawk's Landing Subdivision Phase 2
Plot 2-446 Platted 5/11/2007

Hawk's Landing Subdivision Phase 2
Replat of Lots 23 & 24
Plot 19-1525 Platted 6/3/2009

Hawk's Landing Subdivision Phase 2
Replat of Lots 21 & 22
Plot 19-1733 Platted 8/4/2010

Hawk's Landing Subdivision
Replat of Lot 1A, Phase 1 and Lot 1A, Phase 2
Plot 19-1951 Platted 11/8/2011

Hawk's Landing Subdivision Phase 2
Replat of Lots 25, 26, 27 and 43
Plot 19-2383 Platted 12/5/2013

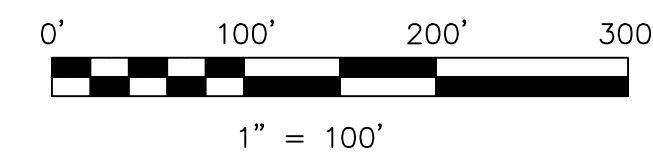
Last Revision: 12/27/2013

**T-9, R-6,
4th Qtr., Lot 1
Berlin Twp.
Holmes County, Ohio**

B-13C

- 0100158000 (22) Martins Creek Properties, Ltd.
OR 246-1047 8/16/2013
0.019 ac p.12-507
- 0101319008 (23) Naomi Mullet, trustee
OR 206-969 8/15/2008
0.011 ac p.12-503
- 0101457000 (24) Albert B. and Rebecca A. Hershberger
276-918 1/24/1997
0.067 ac p.16-336
- 0100591001 (25) Owens-Illinois Prescription Products, Inc.
OR 55-486 7/18/2000
0.021 ac total p.17-565
(0.012 ac Lot 1 4th Qtr.)
(0.009 ac Lot 39 3rd Qtr.)

Lot 6 4th Qtr., T-9 R-6
Berlin Township
(B-12)



LET IT BE KNOWN, THIS MAP HAS BEEN PREPARED AS A REFERENCE GUIDE TO PROPERTY OWNERSHIP. WE BELIEVE THIS INFORMATION TO BE CORRECT AND CURRENT. HOWEVER IT IS NOT INTENDED FOR ANY LEGAL USE, WHETHER IT BE IN SALES, TRANSFERS, TRADES, LEASES OF ANY TYPE, ETC., AND DO NOT ACCEPT RESPONSIBILITY FOR ERRORS OF ANY NATURE OR OMISSIONS CONTAINED HEREIN.

S.F.T. new survey required for next transfer