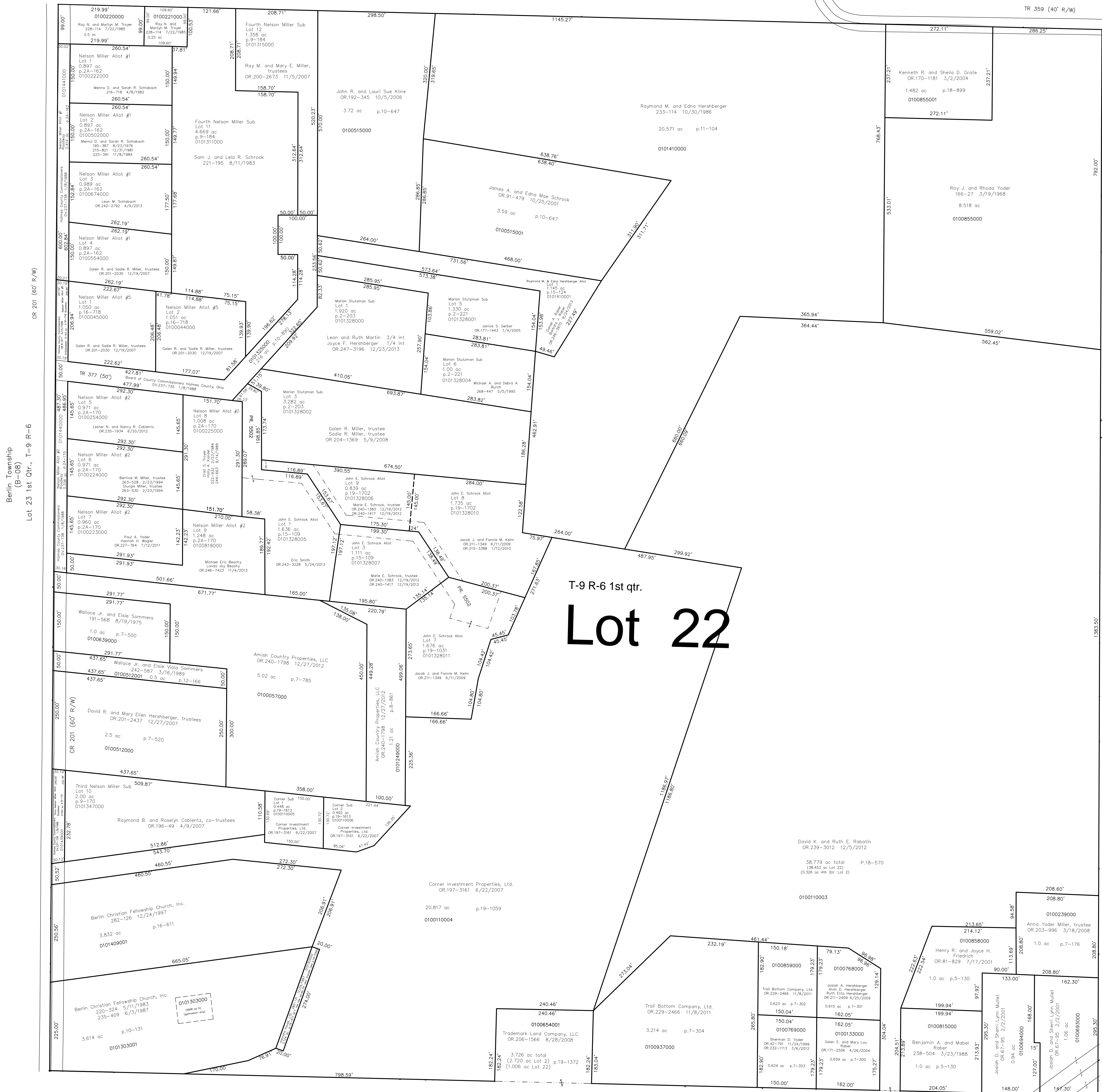


Berlin Township
(B-14)

Lot17 1st Qtr., T-9 R-6

TR 359 (40' R/W)



Berlin Township
(B-08)
Lot 23 1st Qtr., T-9 R-6

Berlin Township
(B-13B)
Lot 21 1st Qtr., T-9 R-6

- nw part Nelson Miller Allotment #1
Plot 2A-162 Platted 7/28/1976
- w part Nelson Miller Allotment #2
Plot 2A-170 Platted 8/3/1979
- sw part Third Nelson Miller Subdivision
Plot 9-170 Platted 3/7/1983
- n part Fourth Nelson Miller Subdivision
Plot 9-184 Platted 7/5/1983
- w part Nelson Miller Allotment No. 3
Plot 16-716 Platted 5/8/1998

- n part middle Marion Stutzman Subdivision
Plot 2-203 Platted 6/22/1987
Note: Lot 4 reported as John E. Schrock Allotment #1
see Plot 15-109 Platted 10/21/1996
- n part middle Marion Stutzman Subdivision Replat of Lot 2
Plot 2-221 Platted 7/30/1990

- w part John F. Schrock Allotment #1
Plot 15-109 Platted 10/21/1996
- w part John F. Schrock Allotment #1
Replat of Lots 4, 5, and 6 and Additional Land
Plot 19-1031 Platted 5/25/2007
- w part John F. Schrock Allotment #1
Replat of Lot 2 and Lot 6
Plot 19-1702 Platted 5/24/2010

- middle part Raymond M. & Edna Hershberger Allotment
No. 1
Plot 15-124 Platted 4/11/1997

- sw part Corner Subdivision
Plot 19-1613 Platted 12/16/2009

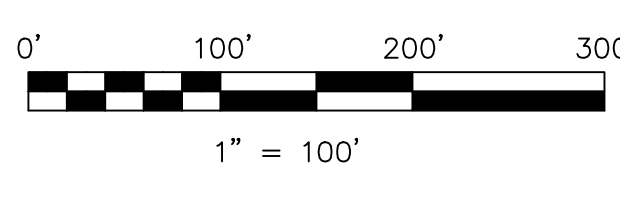
T-9 R-6 1st qtr.
Lot 22

Lot 2 4th Qtr., T-9 R-6
Berlin Township
(B-13D)

SR39 & US63
(R/W varies)

Last Revision: 12/23/2013

**T-9, R-6,
1st Qtr., Lot 22
Berlin Twp.
Holmes County, Ohio**



LET IT BE KNOWN, THIS MAP HAS BEEN PREPARED AS A REFERENCE
GUIDE TO PROPERTY OWNERSHIP. WE BELIEVE THE INFORMATION TO
BE CORRECT AND CURRENT, HOWEVER IT IS NOT INTENDED FOR ANY
LEGAL USE, WHETHER IT BE IN SALES, TRANSFERS, TRUSTS, LEASES
OF ANY TYPE, ETC., AND DO NOT ACCEPT RESPONSIBILITY FOR
ERRORS OF ANY NATURE OR OMISSIONS CONTAINED HEREIN.

S.F.T. new survey required
for next transfer

B-13A