

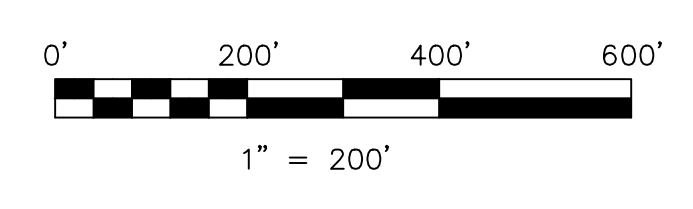
Lot 14 1st Qtr. T-9 R-6
Berlin Township (B-09)
Lot 19 1st Qtr. T-9 R-6

- new Sec 8 Ashley's Manor Allotment No.1 Plat 16-881 Platted 10/15/1998
- new Sec 8 Gerber Farm Estates Plat 17-535 Platted 6/21/2000
- new Sec 8 Amigos Subdivision Plat 19-2064 Platted 5/2/2012
- new Sec 8 Lamplight Estates Plat 17-781 Platted 2/12/2001
- new Sec 8 Bluebird Haven Subdivision Plat 2-354 Platted 12/6/2002
- w sw Sec 8 Big Buck Acres Subdivision Plat 19-1228 Platted 1/11/2008
- w nw Sec 8 Buena Vista Subdivision Plat 19-1922 Platted 10/7/2011

Last Revision: 9/12/2013

**T-9, R-6, Section 8
1st Qtr., Lots 20 & 15
Berlin Twp.
Holmes County, Ohio**

B-04



LET IT BE KNOWN THIS MAP HAS BEEN PREPARED AS A REFERENCE GUIDE TO PROPERTY OWNERSHIP. WE BELIEVE THIS INFORMATION TO BE CORRECT AND CURRENT, HOWEVER IT IS NOT INTENDED FOR ANY LEGAL USE, WHETHER IT BE IN SALES, TRANSFERS, TRADES, LEASES OF ANY TYPE, ETC., AND DO NOT ACCEPT RESPONSIBILITY FOR ERRORS OF ANY NATURE OR OMISSIONS CONTAINED HEREIN.

S.F.T. new survey required for next transfer