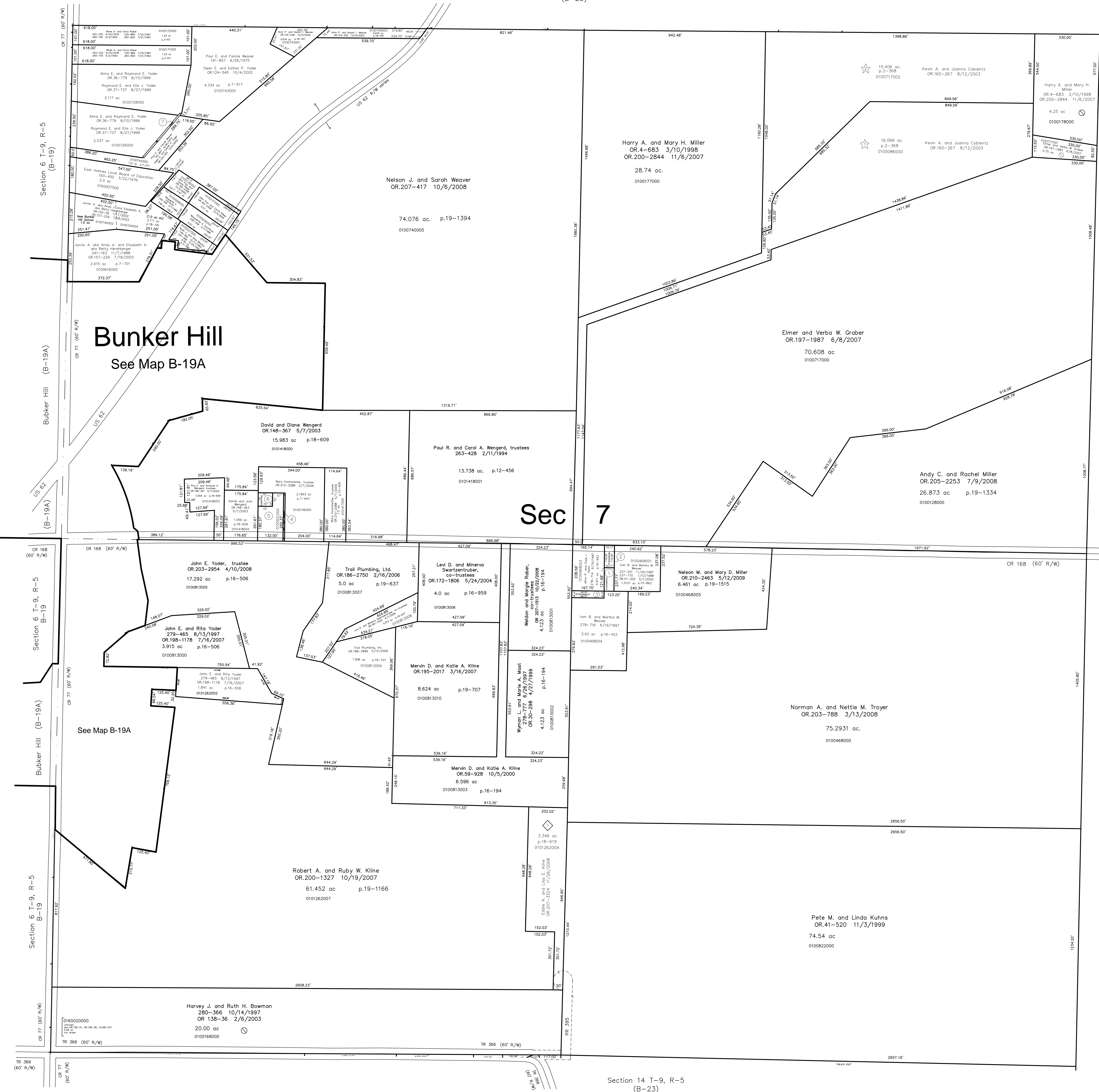


Section 4 T-9, R-5
(B-25)



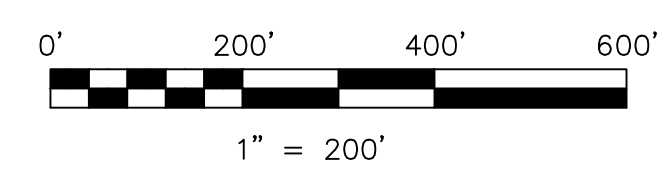
- 0100468002 ① Ivan B. and Martha Weaver
266-817 11/28/1994
0.1462 ac p.10-682
- 0100468006 ② Ivan B. and Martha M. Weaver
OR.4-683 3/10/1998
0.139 ac p.17-475
- 0100468007 ③ Jerry P. and Elaine L. Keim
OR.44-459 12/27/1999
0.139 ac p.17-475
- 0100660000 ④ Gerald C. and Rachel D. Miller, co-trustees
OR.44-459 12/27/1999
0.046 ac p.8-640
- 0100931000 ⑤ Gerald C. and Rachel D. Miller, co-trustees
OR.44-459 12/27/1999
0.6387 ac p.8-617
- 0100917000 ⑥ Gerald C. and Rachel D. Miller, co-trustees
OR.44-459 12/27/1999
0.12 ac p.8-196
- 0100726001 ⑦ Paul E. and Fannie Weaver
Owen E. and Esther P. Yoder
OR.169-327 12/24/2003
0.056 ac p.18-852

Sec. 8, T-9, R-5
Walnut Creek Township
(WC-05)

Bunker Hill
See Map B-19A

Sec 7

See Map B-19A



LET IT BE KNOWN THIS MAP HAS BEEN PREPARED AS A REFERENCE GUIDE TO PROPERTY OWNERSHIP. WE BELIEVE THIS INFORMATION TO BE CORRECT AND CURRENT, HOWEVER IT IS NOT INTENDED FOR ANY LEGAL USE, WHETHER IT BE IN SALES, TRANSFERS, TRADES, LEASES OF ANY TYPE, ETC., AND DO NOT ACCEPT RESPONSIBILITY FOR ERRORS OF ANY NATURE OR OMISSIONS CONTAINED HEREIN.

S.F.T. new survey required
for next transfer

Last Revision: 5/12/2009

T-9, R-5, Sec. 7
Berlin Twp.
Holmes County, Ohio

B-24

- ◇ Beachy Hollow Subdivision
Plat 18-619 Platted 5/15/2003
- ☆ KC Subdivision
Plat 2-368 Platted 8/8/2003