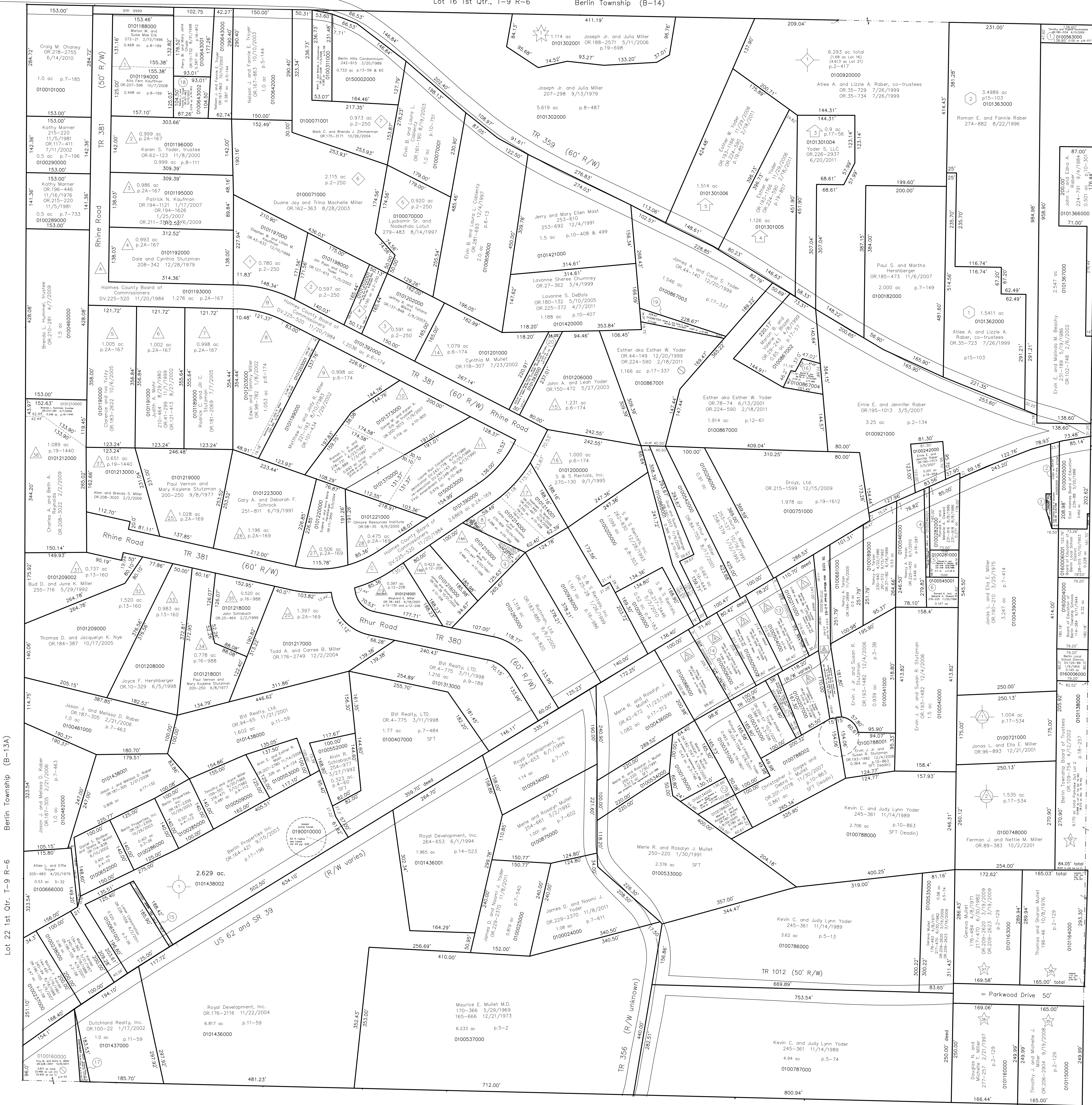


Lot 16 1st Qtr., T-9 R-6 Berlin Township (B-14)



Berlin Township (B-13A)

Berlin Township (B-13B)

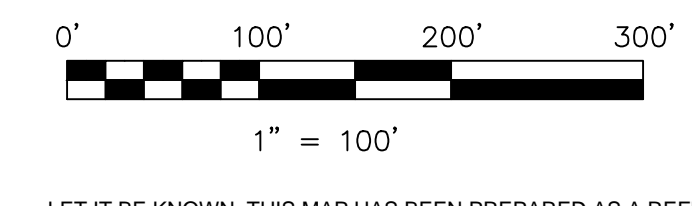
Berlin Township (B-13C)

- Stutzman Subdivision**
- First Stutzman Subdivision Plat 2A-167 Platted 9/16/1977 Lots 1 thru 7
  - Second Stutzman Subdivision Plat 6-174, 175 Platted 7/6/1978 Lots 8 thru 16 (Lots 12 and 13 replotted see P.2-250)
  - Third Stutzman Subdivision Plat 2A-169 Platted 6/22/1979 Lots 17 thru 28
  - Revision of Lot 28 Plat 9-80 Platted 12/18/1980 Revised Lot 24 and Lot 24A
  - Plat of Lots 18 and 19 Plat 12-208 Platted 5/8/1989 Lots 18A, 18B and Revised Lot 19
  - Plat of Lot 21 Plat 13-134 Platted 5/9/1991 Lots 29 and 30
  - Plat of Lots 29 and 30 Plat 16-988 Platted 1/27/1999 Lots 34 and 35
  - Plat of Lots 22 and Part Lot 23 Plat 13-160 Platted 5/27/1992 Lots 31, 32 and 33
  - Plat of Lots 24 and 24A and Part Lot 23 Plat 19-1440 Platted 12/29/2008 Lots 36 and 37
- Richard Weaver Allotment No. 1**
- Plat 2-250 Platted 7/26/1995
- Somerset Allotment No. 1**
- Plat 17-56 Platted 4/8/1999 Lots 1 thru 3
  - Plat of Lots 1 and 2 Plat 19/857 Platted 11/3/2006 Lots 4 and 5
- Garden View Subdivision**
- Plat 2-417 Platted 12/30/2005 Lots 1 thru 3 (also on map B-14)
- Water's Edge Subdivision**
- Plat 19-628 Platted 9/5/2006
- Coblentz Drive Subdivision**
- Plat 15-103 Platted 8/20/1996 Lots 1 thru 5 (also on map B-14)
- Berlin West Subdivision**
- Plat 17-196 Platted 7/28/1999
- Water Cove Allotment No. 1**
- Plat 17-534 Platted 6/21/2000 Lots 1 and 2
- Parkview Subdivision**
- Plat 2-129 Platted 1/10/1968 (also on map B-18A)
- Willard Miller Allotment Number One**
- Plat 2-63 Platted 5/27/1957
- Berlin Hills Condominium**
- 0150002000 Berlin Hills Condominium 242-615 3/20/1989
  - Unit A Mark C. and Brenda J. Zimmerman 0150002001 OR.207-2248 11/4/2008
  - Unit B Mark C. and Brenda J. Zimmerman 0150002002 OR.207-2248 11/4/2008
  - Unit C Mark C. and Brenda J. Zimmerman 0150002003 OR.207-2248 11/4/2008
- Laurel Run Condominium**
- 0150003000 Laurel Run Condominium 243-718 6/14/1989
  - Unit 5545A Beverly A. Lillo 0150003006 OR.217-619 3/23/2010
  - Unit 5545B Rachel Kaufmann 0150003007 245-147 10/25/1989
  - Unit 5545C Kyle W. Schlabach 0150003008 OR.210-2692 5/15/2009
  - Unit 5547A Chester D. Mullet 0150003002 OR.178-18 2/2/2005
  - Unit 5547B Duane A. Yoder 0150003003 OR.215-1658 12/16/2009
  - Unit 5549A Steven D. Hershberger 0150003004 OR.185-2984 12/30/2005
  - Unit 5549B Bonnie Miller 0150003005 245-350 10/25/1989
  - Unit 5567A Nathan S. Mast and Karla N. Mast 0150003010 OR.217-2227 4/13/2010
  - Unit 5567B Sandra S. Coast 0150003011 OR.126-223 11/23/2002
  - Unit 5569A James E. Hershberger 0150003001 OR.185-467 12/2/2005
  - Unit 5569B Michael D. Troyer 0150003009 OR.210-1967 5/5/2009

Lot 1 4th Qtr., T-9 R-6 Berlin Township (B-13C)

- 0100563000 1 Timothy and Crystal Hochstetler OR.180-3154 6/15/2005 0.152 ac p.8-377
- 0100003000 2 East Holmes Board of Education DV.239-88 5/20/1988 0.093 ac p.7-414
- 0100439001 3 East Holmes Board of Education OR.473-822 2/25/2000 0.018 ac p.17-603
- 0100546001 4 Ronald K. and Marlene A. Oswald 278-233 11/20/1996 0.085 ac
- 0100281000 5 Ronald K. and Marlene A. Oswald 231-918 8/8/1986 0.110 ac p.3-298
- 0100545001 6 Ronald K. and Marlene A. Oswald 278-233 11/20/1996 0.147 ac
- 0100000000 7 not used
- 0101214002 8 NW part Lot 17 Stutzman SD (p.12-208) Duane A. and Carol Miller OR.277-947 4/23/1997 0.019 ac p.16-243
- 0101215001 9 E part Lot 18A Stutzman SD (p.12-208) Corey Lee and Christina Conn 275-859 10/24/1986 0.053 ac p.16-243
- 0100000000 10 not used
- 0100208000 11 Christopher J. Dages and Debra L. Mullet OR.201-1078 11/30/2007 0.078 ac p.5-22
- 0100134000 12 Marie R. and Rosalyn J. Mullet 281-763 12/9/1997 0.135 ac p.7-152
- 0100212000 13 E part Lot 2 Willard Miller Allot. (p.2-63) Martha S. Mast, trustee OR.46-86 1/25/2000 0.05 ac p.4-135
- 0100089000 14 W part Lot 4 Willard Miller Allot. (p.2-63) OR.56-946 8/15/2000 0.057 ac
- 0100651000 15 Laner Corporation OR.226-1556 6/2/2011 0.042 ac p.3-92
- 0100867004 16 Marion B. and Valerie L. Blazer OR.78-71 6/13/2001 0.134 ac p.17-895
- 0100156001 17 Dutchland Realty, Inc. OR.100-22 1/17/2002 0.091 ac p.12-507
- 0100643002 18 Nelson J. and Fannie E. Troyer OR.167-863 10/10/2003 0.216 ac p.16-812

- 0100867005 19 James A. and Carol S. Yoder OR.194-329 1/3/2007 0.097 ac p.19-906
- 0101393000 20 Lavonne Sheree Chunney OR.27-362 3/4/1999 Lavonne S. DeBolis OR.180-132 5/10/2005 OR.225-372 4/7/2011 0.1577 ac p.6-174



LET IT BE KNOWN THIS MAP HAS BEEN PREPARED AS A REFERENCE GUIDE TO PROPERTY OWNERSHIP. WE BELIEVE THIS INFORMATION TO BE CORRECT AND CURRENT, HOWEVER IT IS NOT INTENDED FOR ANY LEGAL USE, WHETHER IT BE IN SALES, TRANSFERS, TRADES, LEASES OR ANY TYPE, ETC., AND DO NOT ACCEPT RESPONSIBILITY FOR ERRORS OF ANY NATURE OR OMISSIONS CONTAINED HEREIN.

S.F.T. new survey required for next transfer

Last Revision: 11/8/2011

**T-9, R-6,  
1st Qtr., Lot 21  
Berlin Twp.  
Holmes County, Ohio**

**B-13B**