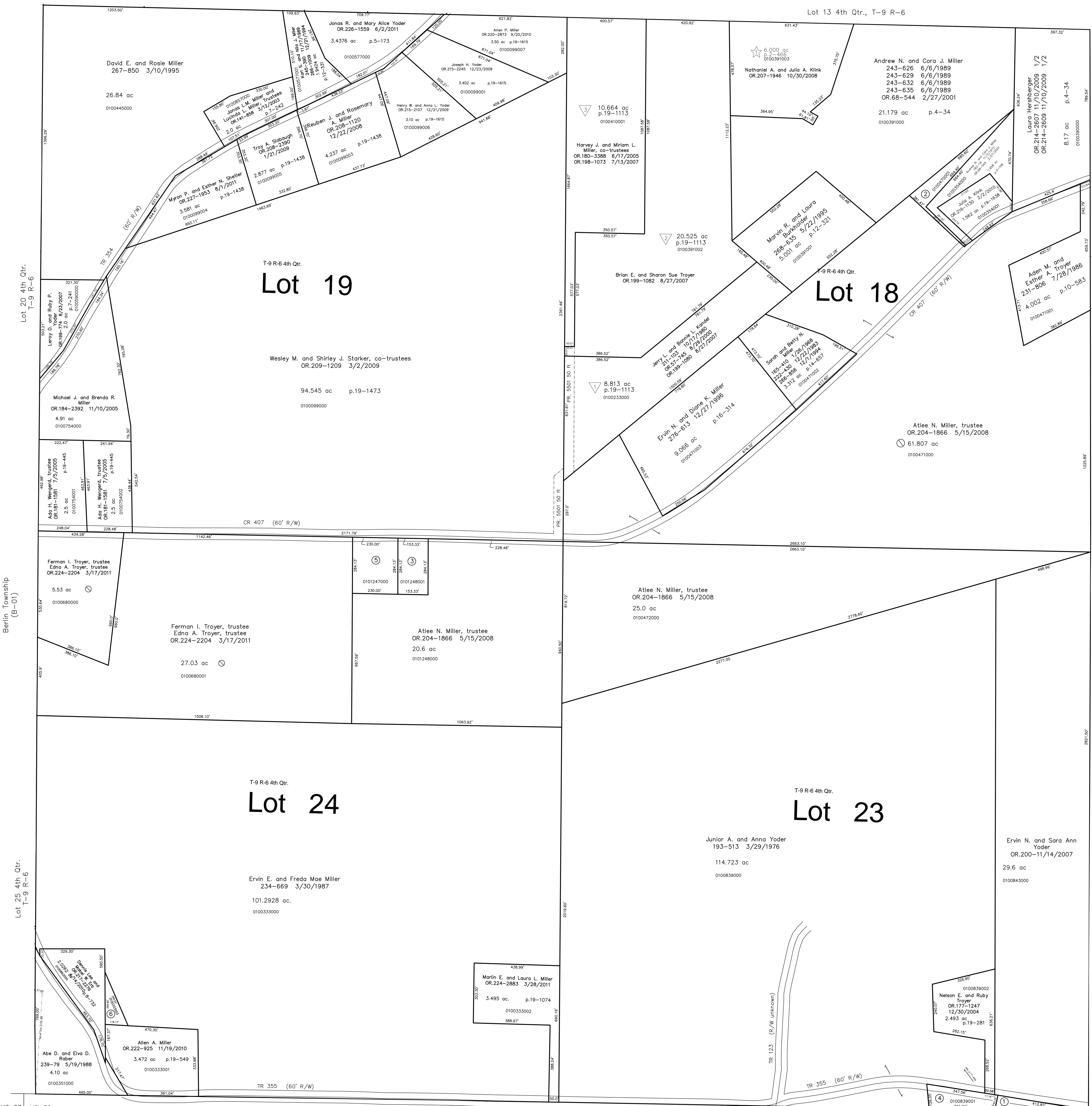


Lot 14 4th Qtr., T-9 R-6

Berlin Township
(B-07)

Lot 13 4th Qtr., T-9 R-6

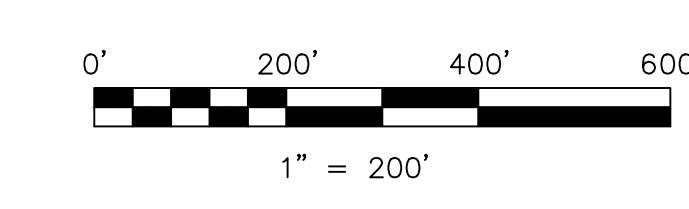


▽ Oak Hill Subdivision
Plat 19-1113 Platted 8/21/2007

☆ Hideaway Hills Subdivision
Plat 2-466 Platted 8/29/2008

- 0100840000 ① Junior A. and Anna Yoder
193-513 3/29/1976
0.385 ac
- 0100470001 ② Andrew N. and Cora J. Miller
243-135 5/1/1989
OR.68-544 2/27/2001
0.873 ac p.12-205
- 0101248001 ③ Atlee N. Miller, trustee
OR.204-1866 5/15/2008
1.0 ac p.16-315
- 0100839001 ④ Paul J. and Sara Mae Yoder
OR.51-927 5/11/2000
0.799 ac p.17-494
- 0101247000 ⑤ Roger L. and Sara A. McClure
OR.197-2444 6/13/2007
1.5 ac p.8-880
- 0100333003 ⑥ Dennis Lee and Mabel W. Erb
OR.217-2279 4/14/2010
0.354 ac p.19-1676

Sec. 2 T-8 R-6
Mechanic Township
(MC-32)



LET IT BE KNOWN, THIS MAP HAS BEEN PREPARED AS A REFERENCE GUIDE TO PROPERTY OWNERSHIP. WE BELIEVE THIS INFORMATION TO BE CORRECT AND CURRENT, HOWEVER IT IS NOT INTENDED FOR ANY LEGAL USE, WHETHER IT BE IN SALES, TRANSFERS, TRADES, LEASES OF ANY TYPE, ETC., AND DO NOT ACCEPT RESPONSIBILITY FOR ERRORS OF ANY NATURE OR OMISSIONS CONTAINED HEREIN.

S.F.T. new survey required
for next transfer

Last Revision: 8/1/2011

**T-9, R-6, 4th Qtr.
Lots 18,19,23,24
Berlin Twp.
Holmes County, Ohio**

B-06