

Lot 23, 3rd Qtr., T-9, R-5
(B-23)

Lot 10, 3rd Qtr., T-9, R-5
(B-23)

Lot 27, 3rd Qtr., T-9, R-5
B-17

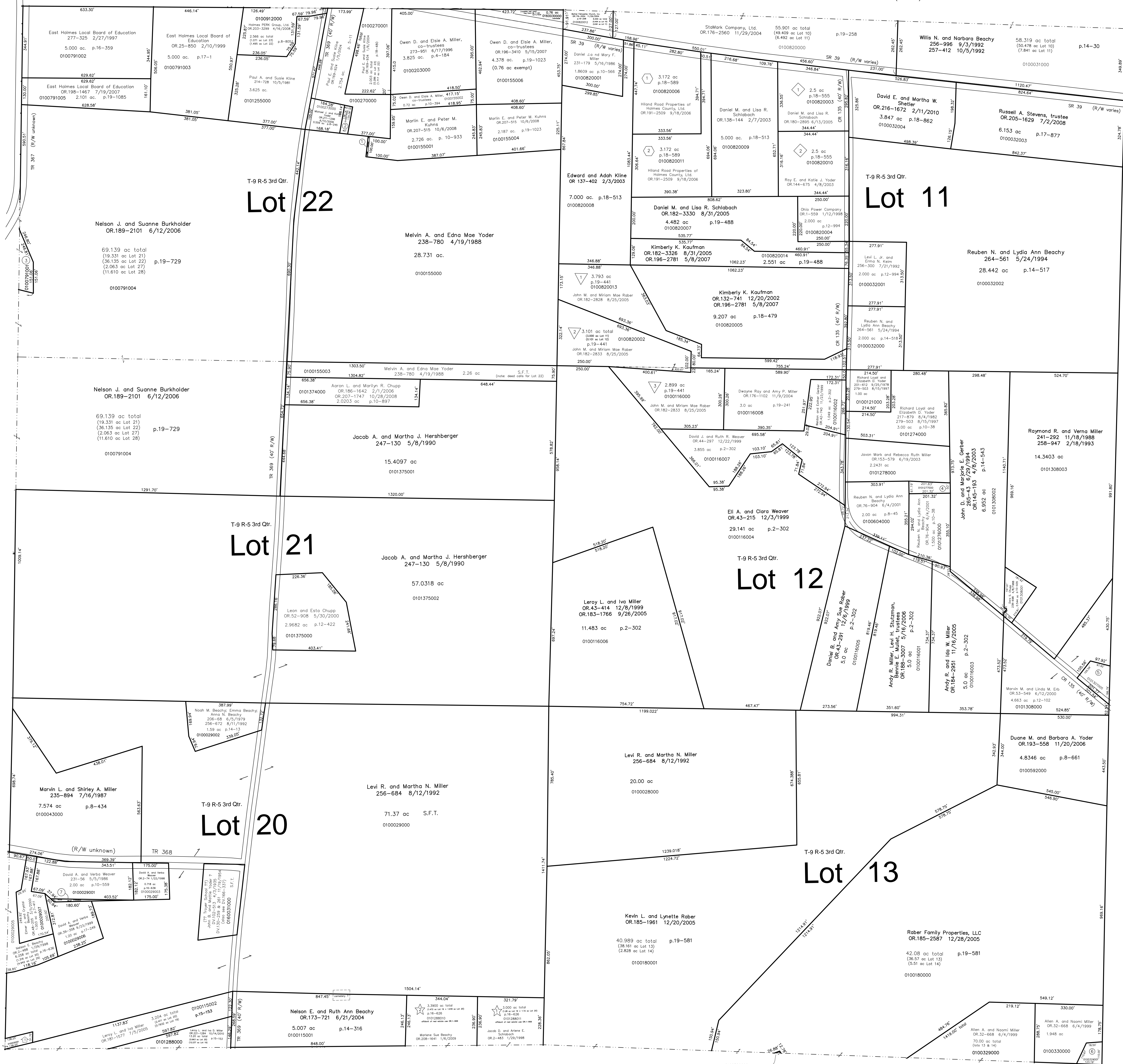
Lot 28, 3rd Qtr., T-9, R-5
B-17

Lot 29, 3rd Qtr., T-9, R-5
B-17

Lot 6, 3rd Qtr., T-9, R-5
Walnut Creek Township (WC-02)

Lot 5, 3rd Qtr., T-9, R-5
Walnut Creek Township (WC-02)

Lot 4, 3rd Qtr., T-9, R-5
Walnut Creek Township (WC-02)



Lot 19, 3rd Qtr., T-9, R-5
(B-21)

Lot 14, 3rd Qtr., T-9, R-5
(B-21)

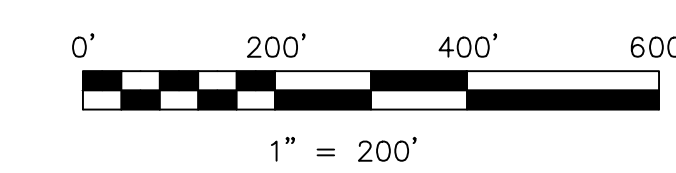
☆ **Frey Allotment No. 2**
Plat 16-626 Platted 1/8/1998
affidavit for real estate use OR.1-999 1/21/1998

🏠 **Sand Knob**
Plat 18-111 Platted 10/31/2001
📄 see map B-17 for owner information

◇ **Benwill Subdivision**
Plat 18-555 Platted 3/19/2003

⬡ **WA Subdivision**
Plat 18-589 Platted 4/16/2003

▽ **JMR Subdivision**
Plat 19-441 Platted 6/30/2005



LET IT BE KNOWN THIS MAP HAS BEEN PREPARED AS A REFERENCE GUIDE TO PROPERTY OWNERSHIP. WE BELIEVE THIS INFORMATION TO BE CORRECT AND CURRENT, HOWEVER IT IS NOT INTENDED FOR ANY LEGAL USE, WHETHER IT BE IN SALES, TRANSFERS, TRADES, LEASES OF ANY TYPE, ETC., AND DO NOT ACCEPT RESPONSIBILITY FOR ERRORS OF ANY NATURE OR OMISSIONS CONTAINED HEREIN.

S.F.T. new survey required
⊙ for next transfer

Last Revision: 10/14/2010

**T-9, R-5, 3rd Qtr.
Lots 11, 12, 13, 20, 21, 22
Berlin Twp.
Holmes County, Ohio**

B-22